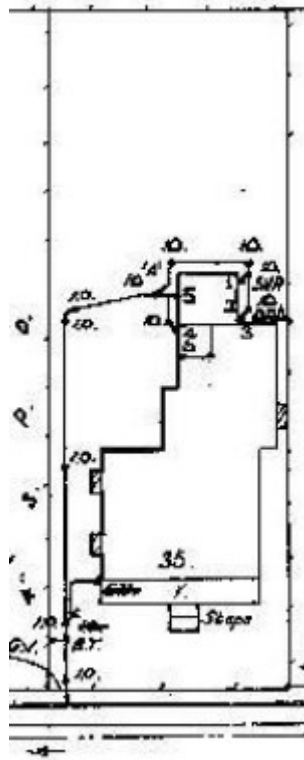

Dwelling



35 Upper Skene Street,
Newtown



GWST Drainage Plan no. N6270, 1926, Barwon Water.

Location

35 Upper Skene Street NEWTOWN, GREATER GEELONG CITY

Municipality

GREATER GEELONG CITY

Level of significance

Incl in HO area not sig

Heritage Overlay Numbers

HO2005

Heritage Listing

Greater Geelong City

Statement of Significance

Last updated on -

Conservation Desirable- Upper Skene Street Heritage Area

History/Notes

A house was first situated at 35 Upper Skene Street in 1917-18 for the new owner, Matthew Mosely Helme (1876-1955), an engine driver. Given the Victorian design of the front portion of the dwelling, and particularly the external chimney breasts with the shafts penetrating the eaves, it is possible that the dwelling may have been relocated to the site at this time (the house therefore having been built earlier elsewhere). A wash house was built at the rear of the property in 1926. Helme lived at the property with his wife, Louisa Agnes (nee Boyd) Helme (whom he married in 1910) until his death in 1955. The property was valued at £1950 at this time.

In 2002, single storey additions and alterations were made at the rear of the house. They were followed in 2011 with more substantial two storey additions. There is an introduced front timber picket fence on a low masonry retaining wall.

References:

Victorian Births, Deaths & Marriages Indexes, Dept. of Justice.
Newtown Rate Books, 1916-17, 1917-18, 1920, 1935, 1950, Geelong Library & Heritage Centre.
Newtown Building Permit 1926, City of Greater Geelong.
Building permits 4075/2002, 3895/2011, City of Greater Geelong.
Sands & McDougall's Directory, 1938.
M.M. Helme, Probate Administration files, 1955, VPRS 28/P4 Unit 1017 PROV.
The Argus, 12 September 1955

Heritage Study/Consultant	Greater Geelong - Newtown West Heritage Review 2016, D. Rowe & W. Jacobs, 2016;
Hermes Number	199415
Property Number	

This place/object may be included in the Victorian Heritage Register pursuant to the Heritage Act 2017. Check the Victorian Heritage Database, selecting 'Heritage Victoria' as the place source.

For further details about Heritage Overlay places, contact the relevant local council or go to Planning Schemes Online <http://planningschemes.dpcd.vic.gov.au/>