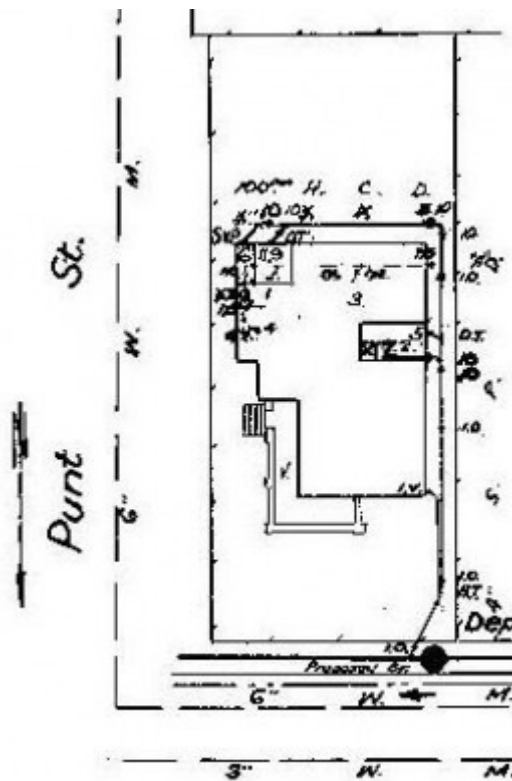


## Dwelling



41 Upper Skene Street,  
Newtown



GWST Drainage Plan no. 4559A, 1930, Barwon Water.

### Location

41 Upper Skene Street NEWTOWN, GREATER GEELONG CITY

### Municipality

GREATER GEELONG CITY

## Level of significance

Incl in HO area contributory

## Heritage Overlay Numbers

HO2005

## Heritage Listing

Greater Geelong City

---

## Statement of Significance

Last updated on -

Contributory Significance- Newtown West Heritage Area

### History/Notes

In 1930, the land at 41 Upper Skene Street was owned by William Walker. He had this house built by V.A. Osterman at this time. Walker lived there with his wife, Myra Janet (nee McKenzie Walker (whom he married in 1937) and later his children, Janet and Rosemary, until his death in 1960.

William Leslie Walker was born in Geelong in c.1899, the son of David and Christina (nee Adcock) Walker. After completing his education, William Walker entered the grocery and produce business of his father. Established in Moorabool Street, the store was substantially damaged by fire in 1914. By 1925, William Walker set up business on his own account in Pakington Street, Geelong West, his father continuing in Moorabool Street. William Walker's property was adjacent to that of his aunt, Miss Catherine Walker of 'Mowbray', 45 Upper Skene Street.

The single storey timber interwar Bungalow styled dwelling is set on a corner allotment to Ruthven Street. It is largely intact, being characterised by hipped roof forms and a return broken back verandah formed under the main roof. The verandah is supported by original face brick and rendered piers with rendered cappings. The balustrading is of the same design and construction. The front doorway faces the side (east) and is also early. Other early features include the broad eaves, brick chimney and the banks of timber framed double hung windows. There is an introduced capped timber picket fence (following the design of the verandah piers and balustrade) on the Ruthven Street boundary (built in 2006) and a solid capped timber fence along Upper Skene Street and returning along the north portion of the Ruthven Street boundary.

### References:

Victorian Births, Deaths & Marriages Indexes, Dept. of Justice.  
Newtown Rate Books, 1930-1935, Geelong Library & Heritage Centre.  
Newtown Building Permit 1930, City of Greater Geelong.  
Geelong West Rate Book, 1925-25, Geelong Library & Heritage Centre.  
Building Permit 531/2006.  
Geelong Advertiser, 26 August 1914, p.3, 22 January 1925, p.5.  
The Argus, 17 November 1937, p.16.  
Camperdown Chronicle, 15 August 1888.

Heritage Study/Consultant	Greater Geelong - Newtown West Heritage Review 2016, D. Rowe & W. Jacobs, 2016;
Hermes Number	199418

Property Number

---

*This place/object may be included in the Victorian Heritage Register pursuant to the Heritage Act 2017. Check the Victorian Heritage Database, selecting 'Heritage Victoria' as the place source.*

*For further details about Heritage Overlay places, contact the relevant local council or go to Planning Schemes Online <http://planningschemes.dpcd.vic.gov.au/>*