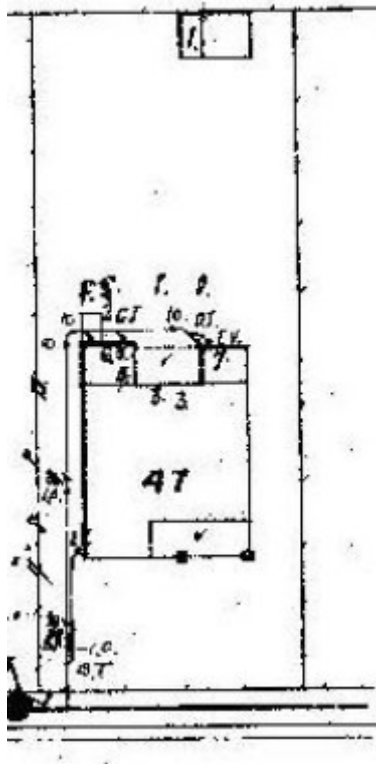

Dwelling



43 Upper Skene Street,
Newtown



GWST Drainage Plan no. 6189, Dec 1925, Barwon Water.

Location

43 Upper Skene Street NEWTOWN, GREATER GEELONG CITY

Municipality

GREATER GEELONG CITY

Level of significance

Incl in HO area not sig

Heritage Overlay Numbers

HO2005

Heritage Listing

Greater Geelong City

Statement of Significance

Last updated on -

Not Significant- Newtown West Heritage Area

Interwar Bungalow dwelling subsequently demolished.

History/Notes

This house was built by Stewart Viccars in 1923. He sold it in 1924 to Frederick Gavin, a plumber. He lived there with his wife, Frances Ellen (nee Weathered) Gavin until his death in 1969.

Frederick James Gavin was born in Geelong in 1891, the son of James Henry and Ann Elizabeth (nee Viccars) Gavin. Frederick trained as a plumber, obtaining a credit pass in plumbing from the Gordon Technical College in 1909. With the onset of the First World War, he enlisted in the A.I.F. in 1915, and in 1918 he was appointed Lance Corporal in France. Returning to Australia in 1919, he had his plumber's licence issued in 1920. At the time of Gavin's death in 1969, the property was described as including 'a weatherboard dwelling 46 years old and containing a lounge, three small bedrooms and dining room with attached kitchenette, & conveniences, also fibrolite garage with iron roof.' The property was also described as being 'in need of repair.'

The original interwar Bungalow design of this timber dwelling has been altered. While there is the original main gabled roof and minor gabled wing on the east side, the minor gabled wing on the west side has been introduced. Originally, there was a front verandah in this part of the dwelling (which projected in line with the east gabled wing). Presumably, this verandah had a flat roof. There are other original features surviving including the faceted bay window with timber framed double hung windows, brick chimney, wide eaves and gable infill and timber bargeboards to the main gable end and minor east gable end. The dwelling retains a character that is in keeping with the character of similar era timber dwellings in the street.

References:

Victorian Births, Deaths & Marriages Indexes, Dept. of Justice.
Newtown Rate Books, 1922-1935, Geelong Library & Heritage Centre.
Newtown Building Permit, 1923, City of Greater Geelong.
Geelong Waterworks & Sewerage Trust Plan NN6189, City of Greater Geelong.
F.J. Gavin, A.I.F. Attestation Papers, National Archives of Australia online.
Geelong Advertiser, 23 January 1909, 31 January 1920.
F. Gavin, Probate Administration files, 1969, VPRS 28/P5 Unit 405 PROV.

Heritage Study/Consultant	Greater Geelong - Newtown West Heritage Review 2016, D. Rowe & W. Jacobs, 2016;
Hermes Number	199419

Property Number

This place/object may be included in the Victorian Heritage Register pursuant to the Heritage Act 2017. Check the Victorian Heritage Database, selecting 'Heritage Victoria' as the place source.

For further details about Heritage Overlay places, contact the relevant local council or go to Planning Schemes Online <http://planningschemes.dpcd.vic.gov.au/>