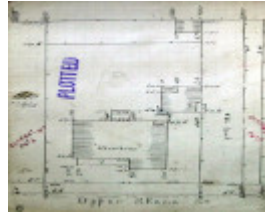

Dwelling - Mowbray



45 Upper Skene Street,
Newtown



GWST Fieldbook, no.52, p.2,
25 Sept 1916, Barwon Water.

Location

45 Upper Skene Street NEWTOWN, GREATER GEELONG CITY

Municipality

GREATER GEELONG CITY

Level of significance

Incl in HO area contributory

Heritage Overlay Numbers

HO2005

Heritage Listing

Greater Geelong City

Statement of Significance

Last updated on -

Contributory Significance- Newtown West Heritage Area

History/Notes

The land at 45 Upper Skene Street formed lot 1 of Henry King's "Sunnyside" landholdings. This property was subdivided as the Newtown Tram Estate in 1912 and the site at 45 Upper Skene Street formed lot 1. It was acquired by Thomas Oliver O'Gorman. He sold the site to Henry Stephen Johnston, builder in 1913, who may

have built this house in late 1914 or early 1915, prior to selling it to Miss Kate Adcock of Geelong West in 1915. She lived there until her death in 1943.

Miss Catherine Adcock was born in c.1860, the daughter of William and Mary (nee McLennan) Adcock of 'Ferndale' farm, Noorat. It appears that Miss Adcock was raised at 'Ferndale'. Her father, William, died in 1885 and in 1889 her mother, due to ill-health running the farm, relocated to Dimboola, having leased the farm. It seems that Catherine Adcock followed her mother to Dimboola. On the death of her mother, Mary in 1911 and following the sale of the family farm, Catherine Adcock relocated to Upper Skene Street.

The asymmetrical, single storey, timber Edwardian styled dwelling largely reflects its original design as identified in the main hipped roof form, projecting minor gabled wing at the front, hipped roofed front verandah (formed as an extension of the main roof), paired timber framed double hung windows in the gable end, other timber framed double hung windows, moulded timber architraves, and the timber window sills, timber framed front door with sidelights and highlights. The timber verandah posts, fretwork and balustrading, and the timber verandah floor, have replaced original fabric (the new detailing being an interpretation of Edwardian detailing). There is an introduced, high pointed timber picket front fence.

References:

Victorian Births, Deaths & Marriages Indexes, Dept. of Justice.

Newtown Rate Books, 1912-1935, Geelong Library & Heritage Centre.

Certificates of Title, vol. 2737 fol. 315, vol. 3738 fol. 547, vol. 3893 fol. 589.

Camperdown Chronicle, 12 September 1885, 1 June 1898, 8 June 1889, 28 August 1943.

The Argus, 9 December 1911, 20 June 1916.

The Age, 29 May 1912.

Newtown Tram Estate subdivision plan, 30 March 1912, Alfred Deakin Library, Deakin University, 333.337099452 Gre/Pos.

Heritage Study/Consultant	Greater Geelong - Newtown West Heritage Review 2016, D. Rowe & W. Jacobs, 2016;
Hermes Number	199420
Property Number	

This place/object may be included in the Victorian Heritage Register pursuant to the Heritage Act 2017. Check the Victorian Heritage Database, selecting 'Heritage Victoria' as the place source.

For further details about Heritage Overlay places, contact the relevant local council or go to Planning Schemes Online <http://planningschemes.dpcd.vic.gov.au/>