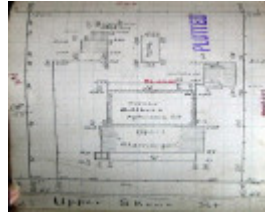


---

## Dwelling



49 -(2) Upper Skene Street,  
Newtown



GWST Fieldbook, no. 147,  
p.7, 15 July 1912, Barwon  
Water

---

### Location

49 - (2) Upper Skene Street NEWTOWN, GREATER GEELONG CITY

### Municipality

GREATER GEELONG CITY

### Level of significance

Incl in HO area not sig

### Heritage Overlay Numbers

HO2005

### Heritage Listing

Greater Geelong City

---

### Statement of Significance

Last updated on -

Not Significant- Newtown West Heritage Area

### History/Notes

The site at 49 Upper Skene Street was originally the location of Henry King's 'Sunnyside' property. He was a nurseryman and appears to have had the timber and brick cottage built between 1874 and 1894. In 1912,

"Sunnyside" was subdivided into 10 allotments known as the Newtown Tram Estate. The brick and timber cottage comprised lot 3 and it was sold to Thomas O'Gorman who in turn sold it to Otto Janssen Albers. Ownership was recorded in the Geelong Waterworks & Sewerage Trust Fieldbook plan in 1912 under Albers' name although Title was not transferred until February 1913. The dwelling was known as "Glamorgan" at this time.

"Glamorgan" was replaced with this and two other brick units in c. 1972-73.

References:

Newtown Rate Books, 1873-74, 1894-95, 1911-14, Geelong Library & Heritage Centre.

Certificates of Title, vol. 2737 fol. 569, vol. 3608 fol. 571.

Geelong Waterworks & Sewerage Trust Plan of Drainage, NN61404, first dated January 1973.

Pictometry aerial image, c.2008, City of Greater Geelong.

Newtown Tram Estate subdivision plan, 30 March 1912, Alfred Deakin Library, Deakin University, 333.337099452 Gre/Pos.

Heritage Study/Consultant	Greater Geelong - Newtown West Heritage Review 2016, D. Rowe & W. Jacobs, 2016;
Hermes Number	199423
Property Number	

---

*This place/object may be included in the Victorian Heritage Register pursuant to the Heritage Act 2017. Check the Victorian Heritage Database, selecting 'Heritage Victoria' as the place source.*

*For further details about Heritage Overlay places, contact the relevant local council or go to Planning Schemes Online <http://planningschemes.dpcd.vic.gov.au/>*