

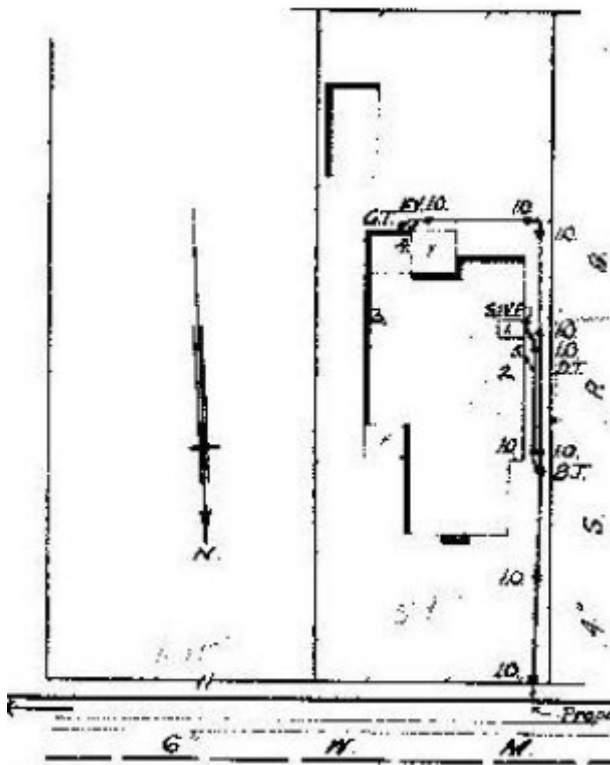
Dwelling



59 Upper Skene Street,
Newtown



'Design C.F.10' in Designs for
Homes under Credit Foncier,
Loan Conditions, State
Savings Bank of Victoria, Jan
1940.



GWST Drainage Plan no. 4763A, 1938, Barwon Water.

Location

59 Upper Skene Street NEWTOWN, GREATER GEELONG CITY

Municipality

Level of significance

Incl in HO area contributory

Heritage Overlay Numbers

HO2005

Heritage Listing

Greater Geelong City

Statement of Significance

Last updated on -

Contributory Significance- Newtown West Heritage Area

History/Notes

In 1912-13, the site at 47 Upper Skene Street formed lot 8 of the Newtown Tram Estate that had previously formed Henry King's "Sunnyside" property. It was purchased by Abram Dower. Following his death in 1936, this site was sold to J.C. Adams, accountant. He had this house built in 1938, possibly following a standard State Savings Bank design under the credit foncier scheme as the Bank held Title from January 1938. The design concept is similar (but not identical) to the Bank's "Design C.F.10" and "H.20" schemes. G. Burridge Leith, Melbourne architect, was responsible for the standard State Savings Bank designs. Adams lived at 59 Upper Skene Street until the property was purchased by William Donaldson, engineer, in 1942.

John Campbell Adams was born in c.1909, the son of Albert and Marion. He married Miss Nancie Dean and they had two children.

The timber single storey late interwar Bungalow styled dwelling is reflective of its original design. This includes the hipped roof forms, prominent brick chimney, timber framed double hung corner windows, broad eaves and side entrance porch supported by a brick pier. At the front are introduced wire fence and gates.

References:

Victorian Births, Deaths & Marriages Indexes, Dept. of Justice.

Newtown Rate Books, 1937-1942, Geelong Library & Heritage Centre.

Newtown Building Permit, 1938, City of Greater Geelong.

Certificates of Title, vol. 4029, fol. 630, vol. 4977, fol. 264.

Designs for Homes under Credit Foncier, Loan Conditions, State Savings Bank of Victoria, Jan 1940.

The State Savings Bank of Victoria: Design Book Housing Loan Conditions, March 1941.

The Argus, 10 April 1939, 17 April 1943.

P. Cuffley, Australian Houses of the '20s and '30s, The Five Mile Press, 1989.

Newtown Tram Estate subdivision plan, 30 March 1912, Alfred Deakin Library, Deakin University, 333.337099452 Gre/Pos.

Hermes Number 199429

Property Number

This place/object may be included in the Victorian Heritage Register pursuant to the Heritage Act 2017. Check the Victorian Heritage Database, selecting 'Heritage Victoria' as the place source.

For further details about Heritage Overlay places, contact the relevant local council or go to Planning Schemes Online <http://planningschemes.dpcd.vic.gov.au/>