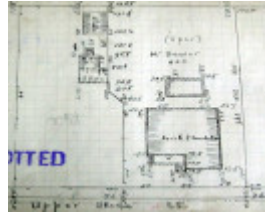

Dwelling



63 Upper Skene Street,
Newtown



GWST Fieldbook, no.52, p.2,
25 Sept 1916, Barwon Water.

Location

63 Upper Skene Street NEWTOWN, GREATER GEELONG CITY

Municipality

GREATER GEELONG CITY

Level of significance

Incl in HO area contributory

Heritage Overlay Numbers

HO2005

Heritage Listing

Greater Geelong City

Statement of Significance

Last updated on -

Contributory Significance- Newtown West Heritage Area

History/Notes

The land at 63 Upper Skene Street formed part of Henry King's landholdings. This property was subdivided as the Newtown Tram Estate in 1912 and lots 9 & 10 were sold to Abram Dower, an engine driver of Elderslie Terrace, Herne Hill. Dower had this house built on lot 10 in 1913-14. He lived there with his wife, May Elizabeth

(nee Ramsay) Dower until his death in 1936.

Abram Dower was born in c.1867, the son of Joseph James and Mary Ann (nee Cushion) Dower. With May, he raised four children: Jack, Violet, Alice and Clifford. On his death, in 1936, Dower's property in Upper Skene Street was described as 'a 6-roomed W.B. house and outbuildings' valued at £660. The property passed to Abram Dower's son, Clifford.

The asymmetrical, single storey, timber Edwardian dwelling is predominantly intact when viewed from the street. The original features include the principal hipped roof form, together with the minor projecting gabled wing and the convex post-supported front verandah having a timber fretwork valance. Other original features include the brick chimneys, timber framed double hung windows, modest eaves and gable infill.

References:

Victorian Births, Deaths & Marriages Indexes, Dept. of Justice.

Newtown Rate Books, 1912-1935, Geelong Library & Heritage Centre.

Certificates of Title, vol. 2737, fol. 315, vol. 3608 fol. 572.

A. Dower, Probate Administration files, 1936, VPRS 28/P3 Unit 2798 PROV.

Heritage Study/Consultant	Greater Geelong - Newtown West Heritage Review 2016, D. Rowe & W. Jacobs, 2016;
Hermes Number	199431
Property Number	

This place/object may be included in the Victorian Heritage Register pursuant to the Heritage Act 2017. Check the Victorian Heritage Database, selecting 'Heritage Victoria' as the place source.

For further details about Heritage Overlay places, contact the relevant local council or go to Planning Schemes Online <http://planningschemes.dpcd.vic.gov.au/>