

Ceres Primary School



Aerial image showing proposed extent of heritage overlay



Ceres Primary School, 605 Barrabool Road, Ceres



Photo 2: Distance view (from school car park to the north-east) of the Ceres School complex, 2017.



Photo 3: Detail of front elevation of the old Ceres Primary School building, 2017.



Photo 4: Early timber shelter shed, north & east elevations, 2017.



Photo 5: Mature Washingtonia Robusta Palm tree, 2017.

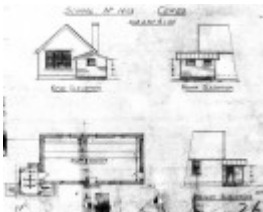


Figure 2: Plan and Elevation Drawings, Ceres State School no. 1602, n.d. (c.1948) showing original roof form and early cloakroom. Source: Drawing SSN 1602.1, Public Record Office Victoria.



Figure 3: Ceres State School Building No. 1602 (right), with the shelter shed and Washington Robusta Palm tree (centre), ornamental garden (centre/foreground) and teacher's cottage (left), 6 December 1948. Source: VPRS 10516/P3 Unit 7 Public Record Office



Figure 4: John Matthew Hartshorn, n.d. This may have been the photograph presented to the Ceres School in 1935. Source: S. Costello, Schools of Geelong and District, Geelong Family History Group, 2010.



Figure 6: West view of Ceres State School showing roof damage, 6 December 1948. Source: VPRS 10516/P3 Unit 7 Public Record Office Victoria.



Figure 7: Interior, Ceres State School showing roof damage, 6 December 1948. Source: VPRS 10516/P3 Unit 7 Public Record Office Victoria.

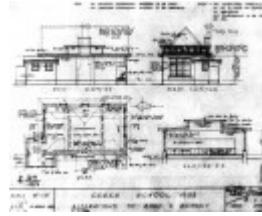


Figure 9: P. Everett, Proposed Alterations to Ceres School ? Floor Plan, Elevations & Section, 10 March 1949, Source: Drawing SSN 1602.2, Public Record Office Victoria.



Figure 11: Ceres School under construction (front/north elevation), 15 Sept 1950. Source: VPRS 10516/P3 Unit 7 Public Record Office Victoria.



Figure 12: Ceres School under construction (south & west elevations), 15 Sept 1950. Source: VPRS 10516/P3 Unit 7 Public Record Office Victoria.



Figure 13: Newly completed Ceres School (front elevation), 1950. Source: VPRS 10516/P3 Unit 7 Public Record Office Victoria.



Figure 14: Newly completed Ceres School (front elevation), 1950. Source: VPRS 10516/P3 Unit 7 Public Record Office Victoria.



Figure 15: Newly completed Ceres School (south & west elevations), 1950. Source: VPRS 10516/P3 Unit 7 Public Record Office Victoria.



Figure 16: Newly completed Ceres School (south elevation) 1950. Source: VPRS 10516/P3 Unit 7 Public Record Office Victoria.



Figure 17: Ceres Primary School, front elevation, c.1993 Source: Late Ian Wynd photograph collection.



Figure 19: Aerial view of the Ceres Primary School, December 1970. Source: Film 2457, Landata.



Figure 22: Timboon Consolidated and Secondary School, 1958. Source: Victorian Places online at <http://www.victorianplaces.com>



Figure 23: P. Everett, Perspective drawing of proposed Infants School, Balwyn North, 1948. Source: Architectureau online, January 2017: <http://architectureau.com/article/australian-schools/>

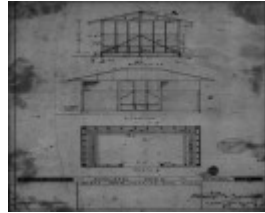


Figure 24: P. Everett, Plan, Elevation & Section A-A drawing of proposed Shelter Shed, Dixons Creek State School, 30 March 1935. Source: Building Services Agency (BSA) drawing, SSO1585.2, Public Record Office Victoria.



Figure 1: Part Barrabool Parish Plan, Dept of Lands & Survey, Melbourne, March 1946, showing land sections in the Barrabool Hills, including Ceres. Source: VPRS 16171, Public Record Office Victoria

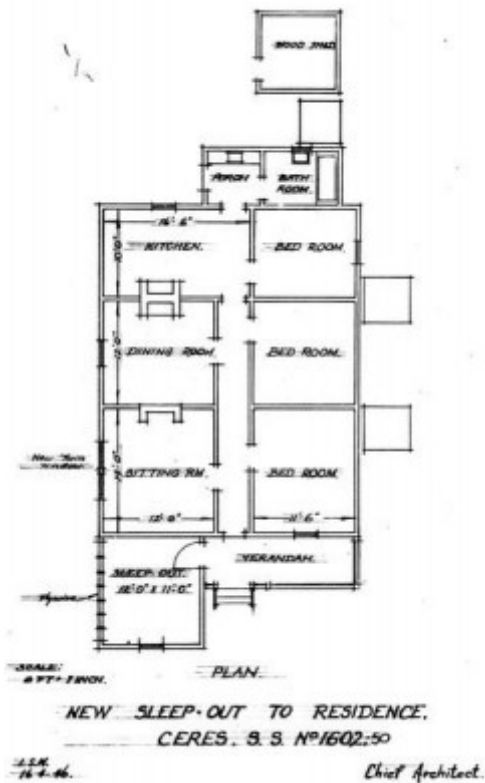


Figure 5: Proposed sleep out addition to Teacher's Residence, 16 April 1946 Source: Drawing SS 1602.50, Public Record Office Victoria.

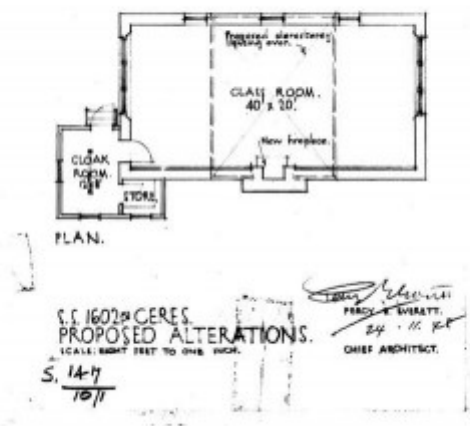


Figure 8: P. Everett, Proposed Alterations to Ceres School ? Floor Plan, 24 November 1948 Source: Drawing SS 1602.51, Public Record Office Victoria.

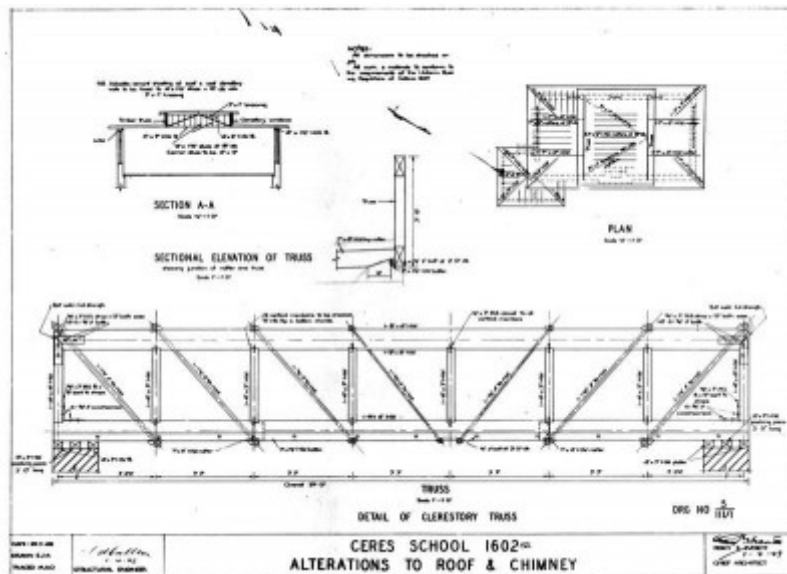


Figure 10: P. Everett, Proposed Alterations to Ceres School ? Roof Plan, Section & Detail of Clerestory Truss, 1 April 1949, Source: Drawing SS 1602.52, Public Record Office Victoria

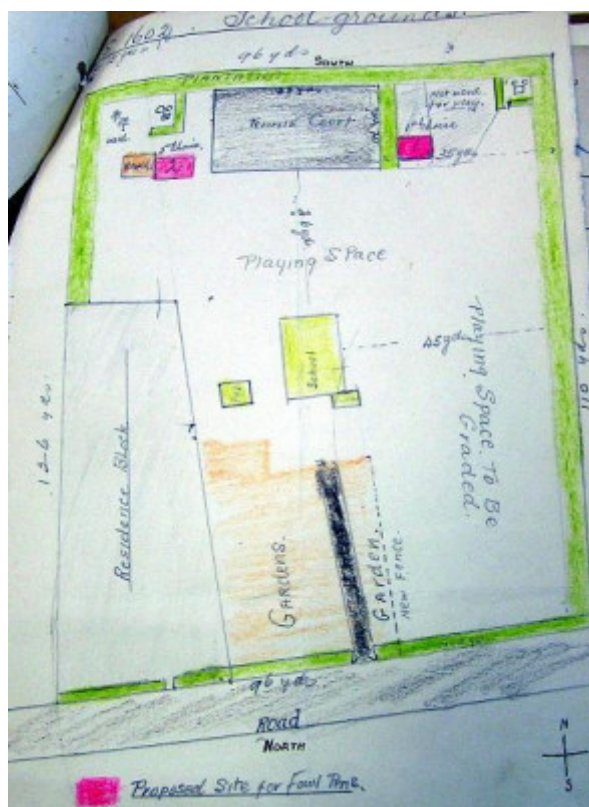


Figure 18 Schematic Site Plan of the Ceres State School, 1946. Source: Public Building file, VPRS 795/P0 Unit 2287 Public Record Office Victoria.



Figure 20: Bradbury Dicker Whitnall Architects, Ceres State School Site Analysis, 2000 .
 Source: Public Building file VPRS 16963/P1 Unit 293 Public Record Office Victoria.

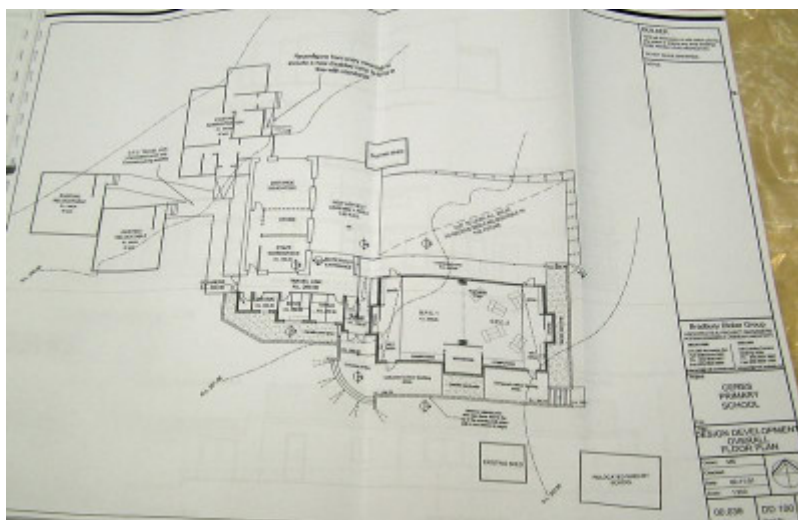


Figure 21: Bradbury Dicker Architects, Ceres State School Design Development Overall Plan, 2001 .
 Source: Public Building file VPRS 16963/P1 Unit 293 Public Record Office Victoria.

Location

605 Barrabool Road CERES, GREATER GEELONG CITY

Municipality

GREATER GEELONG CITY

Level of significance

Included in Heritage Overlay

Heritage Overlay Numbers

HO2008

Heritage Listing

Greater Geelong City

Statement of Significance

Last updated on -

What is Significant?

Ceres Primary School, 605 Barrabool Road, has significance as an educational and community hub since 1875 valued by the local Ceres community. Constructed as a one-roomed gabled school building of local Barrabool stone in 1875, it represented a standard Education Department styled 80-type school designed by the Chief Architect of the Department, Henry Bastow. Today, the school is an amalgam of the original design and the major alterations carried out by the Chief Architect of the Public Works Department, Percy Everett in 1949-50, following substantial storm damage to the school in 1948. In addition to being an important education centre for local Primary school children, the school has played host to different community activities including Arbor Day tree plantings in the early 20th century. The fabric of significance includes the centrally-located stone school building, mature Washingtonia Robusta Palm tree at the front and the hipped roofed timber shelter shed (built in 1934 probably to a design by the Chief Architect of the Public Works Department, Percy Everett). This shelter shed is a rare known surviving interwar example of a State School pavilion in the Greater Geelong area.

How is it significant?

Ceres Primary School, 605 Barrabool Road, Ceres, is historically and socially significant at a LOCAL level.

The timber shelter shed at the Ceres Primary School, 605 Barrabool Road, Ceres, is aesthetically significance at a LOCAL level.

Why is it significant?

Ceres Primary School, 605 Barrabool Road, has historical significance for its enduring associations with the development and progress of State education for local school children since 1875 (Criterion A). From this time, the school has been the centre for education and social activities in the Ceres area. It has associations with several teachers and locals, including John Matthew Hartshorn, first Head Teacher who served from 1875 until 1894 (and previously as Head Teacher at Barrabool Hills Common School No. 50 from 1867) (Criterion H). Hartshorn and other staff that followed were the guiding forces in the education of local children. The school also has associations with Henry Bastow, Chief Architect of the Education Department, who was responsible for the original gabled school building; and Percy Everett, Chief Architect of the Public Works Department who designed the "Modern" shallow pitched roofed alterations in 1949 following substantial storm damage to the building. The historical significance of the Ceres School is embodied in the surviving historic fabric: centrally located early school building constructed of Barrabool stone (an amalgam of different standard design philosophies for School buildings in the 19th and mid 20th centuries), mature Washingtonia Robusta Palm tree at the front of the site (which appears to have been planted in 1901 to celebrate the raising the Union Jack flag at the School for the first time); and the hipped roofed timber shelter shed (built in 1934 probably to a design by Percy Everett, having replaced an earlier pavilion on the site).

Ceres Primary School, 605 Barrabool Road, has social significance for the important educational role the site has played in the life and development of local school children since 1875 until the present day (Criterion G). It is recognised and valued by sections of the Ceres community for this reason.

The hipped roofed timber shelter shed at the Ceres Primary School, 605 Barrabool Road, has aesthetic significance as a rare known surviving example of an interwar State School outbuilding that demonstrates its original design (Criterion E). The modest scale and hipped form, together with the timber weatherboard wall cladding with timber lattice screening in the upper portions, and the exposed timber rafters in the eaves are those intact design traits that reflect its original appearance. While reflecting a standardized design approach by Percy Everett, Chief Architect of the Public Works Department, it is now one of few known to be extant.

The early Ceres Primary School building, 605 Barrabool Road, has aesthetic interest as a surviving amalgam of standardized State School design philosophies in the 19th and mid 20th centuries. This is evidence in the rectangular layout, Barrabool stone walls and single timber framed 12 paned double hung windows (reflective of the original design by Henry Bastow in 1875) and in the shallow-pitched roofs, raised roofed portion with clerestorey windows, broad eaves and banks of timber framed windows (a legacy of the major modernization designed by Percy Everett in 1949). While of aesthetic interest, the school building is not considered to have sufficient integrity of either era to meet an aesthetic/architectural significance threshold. There are more intact examples of single roomed State School designs of the 1870s in the Greater Geelong area, while there are more substantial and intact, purpose-built mid 20th century school buildings that embody the Modern design philosophies for State Schools by Percy Everett in Victoria.

Heritage Study/Consultant City of Greater Geelong - Ceres Heritage Citations Project, Dr David Rowe, 2018;

Hermes Number 200348

Property Number

Physical Conditions

The Ceres Primary School, 605 Barrabool Road, Ceres is situated on sloping ground on the southern side of the road, comprising a near rectangular layout. The front is marked by a mature cypress hedge with a central entrance opening and another opening on the east side. The latter entrance is marked by a low solid Barrabool stone fence with name plate that reads "Ceres P.S. No. 1602 Est. 1875" and cyclone wire mesh vehicular and pedestrian gates supported by timber posts. Immediately behind the hedge on the east side is an asphalt play area and skillion roofed buildings. There is another skillion roofed building on the west side, together with children's play structures.

Centrally located is the original stone school building. It has a broadly projecting shallow pitched hipped main roof (built 1949-50), together with an elevated roofed portion (built 1949-50) with an introduced shallow gabled form (having replaced a shallow-hipped roof). These roofs are clad in introduced tray deck, having replaced asbestos roof cladding in earlier years. The raised roofed portion has early (1949-50) timber framed clerestorey windows on the north (front) elevation. The Barrabool stone walls - including the rough hewn plinth with dressed coursed stonework above - reflect the original fabric of 1875. Also original are the three single window openings on the east elevation, with 12 paned timber framed double hung windows. The front elevation has a bank of three 12 paned full length windows that replaced the original raised bank of windows in 1949-50. The original stone building is dominated at the front by the introduced gabled administration wing. A remnant of the early cloak room wing is evident in the flat-roofed section adjoining the north wall of the school building (west side).

Adjacent to the old stone school to the north-east is the early timber shelter shed built in 1934. The modestly scaled pavilion has a hipped roof form clad in corrugated sheet metal (with an introduced bay of clear roof sheeting at the front) with broad eaves and exposed timber rafters. There is a large central door opening at the front (with an introduced door), the walls being clad in timber weatherboards, the upper open portions having timber lattice screening.

All other buildings and structures appear to have been introduced in more recent years, including the large flat and skillion roofed wing to the south-east of the old stone building, smaller gabled outbuildings and the shade sail

structures.

At the rear (south of the site) is a grassed sports ground with running track. There is an asphalt basketball court in the south-east corner. The western and southern boundaries of the school site are planted with young Cypress trees.

Photo 2: Distance view (from school car park to the north-east) of the Ceres School complex, 2017. Photo 3: Detail of front elevation of the old Ceres Primary School building, 2017. Photo 4: Early timber shelter shed, north & east elevations, 2017. Photo 5: Mature Washingtonia Robusta Palm tree, 2017.

This place/object may be included in the Victorian Heritage Register pursuant to the Heritage Act 2017. Check the Victorian Heritage Database, selecting 'Heritage Victoria' as the place source.

For further details about Heritage Overlay places, contact the relevant local council or go to Planning Schemes Online <http://planningschemes.dpcd.vic.gov.au/>