
HOUSE



House, 39 Main Street



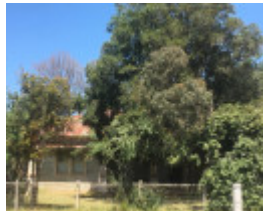
House, 39 Main Street



House, 39 Main Street



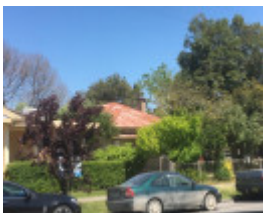
House, 39 Main Street



House, 39 Main Street



House, 39 Main Street



House, 39 Main Street



House, 39 Main Street

Location

39 MAIN STREET, PAKENHAM, CARDINIA SHIRE

Municipality

CARDINIA SHIRE

Level of significance

Included in Heritage Overlay

Heritage Overlay Numbers

HO283

Heritage Listing

Cardinia Shire

Statement of Significance

Last updated on - January 1, 1900

What is significant?

The house, constructed by W.J. Stephenson in 1929, at 39 Main Street, Pakenham is significant. It is an interwar bungalow, which is specifically designed to address its corner location. Asymmetrical in plan, it has a relatively low-pitched hipped roof that extends to form a return verandah between the projecting hipped bays that face toward each street. The verandah, which continues across each bay, is carried on typically chunky tapered rendered piers. The windows to the main elevations are timber framed paired double hung sash with six pane uppers. There is one capped rendered chimney. The house is very intact and is complemented by an early or original woven wire fence along both frontages with a simple lych-gate at the corner.

Non-original alterations and additions are not significant.

How is it significant?

The house at 39 Main Street, Pakenham is of local aesthetic significance to Cardinia Shire.

Why is it significant?

It is significant as a representative example of an interwar bungalow, specifically designed to address the corner location by the inclusion of projecting bays facing to each street. It is notable for its high degree of intactness with features such as the chunky verandah piers that are characteristic of the bungalow style, and is complemented by an early fence. (Criteria D & E)

Heritage Study/Consultant	Pakenham Structure Plan Heritage Review, David Helms Heritage Planning, 2017;
Construction dates	1929,
Other Names	Review, New,
Hermes Number	201534
Property Number	

Physical Description 1

The house at 39 Main Street is an interwar bungalow, which is specifically designed to address its corner location. Asymmetrical in plan, it has a relatively low-pitched hipped roof that extends to form a return verandah between the projecting hipped bays that face toward each street. The verandah, which continues across each bay, is carried on typically chunky tapered rendered piers. The windows to the main elevations are timber framed paired double hung sash with six pane uppers. There is one capped rendered chimney. The house is very intact and is complemented by an early or original woven wire fence along both frontages with a simple lych-gate at the corner.

This place/object may be included in the Victorian Heritage Register pursuant to the Heritage Act 2017. Check the Victorian Heritage Database, selecting 'Heritage Victoria' as the place source.

For further details about Heritage Overlay places, contact the relevant local council or go to Planning Schemes Online <http://planningschemes.dpcd.vic.gov.au/>