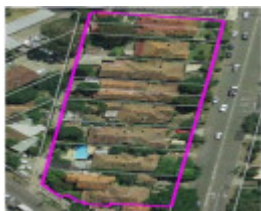


Row of Federation Houses, Burke Road, Malvern East



Row of Federation Houses, Burke Road, Malvern East precinct boundary



3 Burke Road Malvern East



5 Burke Road Malvern East



9 Burke Road Malvern East



7 Burke Road Malvern East



11-13 Burke Road Malvern East



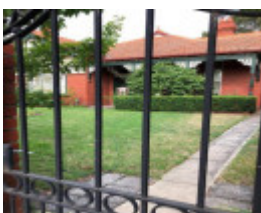
15 Burke Road Malvern East



15 Burke Road, Malvern East



17 Burke Road Malvern East



17 Burke Road, Malvern East.jpeg



17 Burke Road, Malvern East

Location

3, 5, 7, 9, 11, 13, 15, 17, 19 & 21 Burke Road, MALVERN EAST VIC 3145

Municipality

STONNINGTON CITY

Level of significance

Included in Heritage Overlay

Heritage Overlay Numbers

HO634

Heritage Listing

Stonnington City

Statement of Significance

Last updated on - July 31, 2018

HO634 Row at 3-21 Burke Road, Malvern East

Reference - *Row of Federation Houses, GJM Heritage/Purcell (June 2017, updated 31 July 2018).*

What is significant?

The row of Federation houses at 3-21 Burke Road, Malvern East, built from 1911 to 1914.

Elements that contribute to the significance of the place include (but are not limited to):

- . The houses' original external form, materials and detailing
- . The houses' high level of integrity to their original design.

Later alterations and additions to each of the dwellings, are not significant.

How is it significant?

The row of houses at 3-21 Burke Road, Malvern East is of local architectural and aesthetic significance to the City of Stonnington.

Why is it significant?

The houses at 3-21 Burke Road, Malvern East form a consistent and highly intact row of detached, modest Federation houses. Together they strongly reflect the Queen Anne style of the later Federation period popular in Malvern East and across Melbourne more broadly. The compositions of the houses and the consistent use of red brick walls and chimneys; terracotta tiles, roof ridging and finials; projecting bay windows; roughcast render and half-timbered gable-ends, are typical of the style (Criterion D).

The houses at 3-21 Burke Road, Malvern East form a unified group of modest Federation Queen Anne houses. The consistency of materials, together with the variety of detailing, such as roof forms, chimneys, projecting gable-ends and window bays, presents a highly picturesque streetscape of Federation houses (Criterion E).

Heritage Study/Consultant	Stonnington - City of Stonnington Federation Houses Study, GJM Heritage Pty Ltd, 2017;
Construction dates	1911,
Other Names	Row at 3-21 Burke Road, Malvern East,
Hermes Number	201834
Property Number	

Physical Description 1

The place comprises a group of single-storey detached and duplex dwellings set within suburban lots, with an approximately 8m set back from the street and rear access via a right of way (ROW). Each has a front garden with mature planting and some large or medium-sized trees. The boundary treatments for each property are modern, and vary from brick walls and iron railings to picket fencing. All dwellings exhibit key features of the Federation Queen Anne architectural style with red brick construction and tiled roofs. Nos. 5, 7, 9 and 15 have more complex plan forms, with diagonal emphasis and additional corner projections and gables. As a group, these dwellings form an attractive row and all remain in fair to good condition.

Each individual dwelling is described below. Each building is Contributory to the significance of the place.

3 Burke Road

No. 3 Burke Road is constructed of tuckpointed red brick with a Marseilles tile roof, decorated with terracotta ridge capping and ball finials. The dwelling has a strong diagonal emphasis in plan. The main hipped roof has a shallower pitch that incorporates the return verandah which is supported on timber piers, with brick sub-walls with terracotta bulls eye sills and undulating capping. The projecting gable is finished in roughcast render (overpainted) with vertical timber strapping and a simple bargeboard. A second street facing gable is finished in overpainted board with strapwork and a large picture window flanked by double hung sashes. A tiled window hood, supported on timber brackets is located over a bow window comprised of timber casements with highlights. A second, large, bow window is located under the verandah, with timber casements with leaded glazing and highlights. A small awning window is located adjacent with terracotta bulls eye sill and radiating brick head. A modern carport and addition are located on the northern side of the dwelling. The site is bounded by a tall, modern timber-paling fence.

5 Burke Road

No. 5 Burke Road has an asymmetrical facade with diagonal emphasis in plan and picturesque roofscape clad in interlocking Marseilles tiles, with ornamental terracotta ridge tiles and cresting and large terracotta ball finials to the gable peaks. Four corbelled red brick chimneys with strap work and terracotta bullnose details remain, and they generally retain one or two simple terracotta pots. The wall construction is tuck pointed red brick, with a decorative rendered band (overpainted) at stringcourse level. The main roof continues at a shallow pitch to form the verandah, which is supported on turned timber posts, with no decorative fretwork and a timber floor. A blind gablet is located on the diagonal, above a projecting bay window, and this is framed by projecting gabled bays on the Burke Road (east) and north elevations. The gabled ends are finished in roughcast render (overpainted) and timber strapping, creating a half-timbered effect. The east facing gable is supported on decorative timber brackets, and has a projecting bow window with rendered head and terracotta bullnose detailing to the sill (Figure 7). A corner, angled bay window is located under the verandah. Windows are timber casements with coloured leadlight glazing and highlights. The site is bounded by a tall, modern timber picket fence.

7 Burke Road

No. 7 Burke Road has a square plan form, with a steeply pitched hipped Marseilles tile roof, ornate terracotta ridge tiles and ball finials. Four tall redbrick chimneys with brick corbelling and strap work survive with one

retaining its original terracotta chimney pots. The wall construction is tuckpointed red brick, with a roughcast render band (overpainted) at sill level. The main gable end is finished in roughcast render (overpainted) with simple timber strapping. A bow window with Marseille tiled window hood supported on decorative timber brackets projects below the gable end. The small blind gablet located over the verandah features matching details. The roof continues at a shallow pitch to form the verandah, which is supported on decorative turned timber posts, with Art Nouveau style brackets and a simple balustrade frieze. The verandah floor is decorative tile and it is accessed via bluestone steps. Window openings are coloured leadlight glazed timber casements with highlights, and terracotta bull nose sill details. The panelled front door is original, with coloured leadlight sidelight. The site is bounded by a tall, modern brick wall.

9 Burke Road

No. 9 Burke Road is a tuckpointed red brick dwelling, with roughcast banding (overpainted) at stringcourse level and a complex, picturesque hipped roofscape with diagonal corner emphasis. The Marseilles terracotta tile roof features ornate terracotta ridge cappings and decorative finials. Two brick chimneys with simple brick corncicing and single terracotta pots survive. The roof continues at a shallow pitch to form the return verandah which is supported by turned timber posts with decorative balustrade timber frieze, and has a decorative tile floor with bluestone steps. The main gable end projects to the east and is finished in smooth render (overpainted) with vertical timber strapping. This is repeated on the blind gablet over the corner verandah. The gabled bay has an off-center bow window with a tiled window hood supported on decorative timber brackets. The windows are timber casements, with stained glass highlights. A single window with radiating brick voussoir head is adjacent to the main bow window. The site is bounded by a tall, modern brick wall constructed in 1970.

11 & 13 Burke Road

Nos. 11 & 13 Burke Road are a pair of dwellings designed and massed to resemble a single property. Constructed in red brick with a hipped, Marseilles tiled roof and plain terracotta ridge tiles, the dwelling is asymmetrically composed with a projecting gable to the east, return verandah to the east and north and second verandah on the south. A single shared red brick chimney with simple corbelling and single chimney pot is visible from the street, centrally located above the verandah. The gable end projects to the east, with roughcast render (overpainted) timber strapping and a simple bargeboard. A simple tiled window hood is located below, supported on timber brackets. The windows are timber casements, with highlights and bullnose terracotta sills. The main return verandah has a bullnose sheet metal roof, supported on turned timber posts with decorative brackets. It is on a raised timber floor with timber infill to the base. The secondary verandah, sheltering the access into No.11 on the southern side is a smaller bullnose form, supported on square timber posts with matching decorative brackets and timber floor. The dwelling overall is a simpler design to the other dwellings in the group, and the site is bounded by a tall, modern timber picket fence.

15 Burke Road

No. 15 Burke Road is an asymmetrically sited dwelling, with a diagonal emphasis in plan. The walls are constructed of tuck pointed red brick, with a decorative rendered dado band (overpainted). The steeply-pitched hip-and-gable roof is clad with terracotta interlocking Marseilles tiles, with ornamental terracotta ridge tiles as well as large terracotta dragon and ball finials to the gable peaks. Two corbelled brick chimneys remain, with brick strapping, and one retains an original terracotta chimney pot. Gabled bays project from the Burke Road (east) and north elevation, with roughcast and timber strapping creating a half-timbered effect to the gabled ends. Below the gable end is a bow window with a tiled window hood supported on decorative timber brackets. The roof continues to form a verandah on the right side of the facade, which returns on the north elevation. The verandah is supported by turned timber posts, with decorative timber brackets and frieze. The floor is tiled and accessed via bluestone steps. A corner, angled bay window is located under the verandah. The windows are timber casements, with coloured leadlight glazing and terracotta bullnose sills. The original timber panelled front door (behind a screen door) survives, with coloured leaded sidelights. The site is bounded by a low brick pier and infill fence, with decorative metal palisade above. A carport and studio is located on the northern boundary, constructed in 1985.

17 Burke Road

No. 17 Burke Road is a red brick dwelling with roughcast render (overpainted) above a terracotta bullseye stringcourse. The dwelling has a square plan form with a steeply pitched hipped and gable roof clad with interlocking Marseilles tiles, with Federation-star ridge cappings and ball finials. The main roof continues at a

shallow pitch to form the verandah below, which is supported on turned timber posts with decorative brackets and small chevron moulding on the fascia. The verandah floor retains early decorative tiles, and bluestone steps. The central hip features a small blind gablet, with timber infill. Three red brick chimneys with brick corbelling and terracotta bullseye detailing remain, with simple chimney pots. The primary gable is finished in roughcast render (overpainted) with vertical timber infills and a plain bargeboard supported on decorative timber brackets. The bow windows are timber casements with leaded highlights and terracotta bullseye sills, and one-over-one sash windows with leaded highlight and terracotta bullseye sills are located under the verandah. The original front door is timber panelled with leaded light and decorative stained glass fan and sidelights. The site is bounded by a tall, modern brick wall. Modern additions have been constructed to the rear.

19 & 21 Burke Road

Nos. 19 & 21 Burke Road are a pair of dwellings, designed and massed to resemble a single property. Constructed of red brick with a simple rendered dado band, a Marseilles terracotta roof, and simple fern finials, the dwelling is asymmetrically composed with a projecting gable to the east, return verandah to the east and north and second verandah on the south. Multiple red brick chimneys with simple brick corbelling survive. The gable end projects to the east, with roughcast render (overpainted), vertical timber strapping and a simple bargeboard. The bow windows are timber casements, with highlights and bullnose terracotta sills. The main hipped roof continues at a shallow pitch to form the main return verandah and smaller southern verandah both of which are supported turned timber posts with timber board infill to the ends. The verandahs are raised, with tiled floors and bluestone edge detailing. The dwelling overall is a simpler design to the other dwellings in the group, and the site is bounded by a low, modern red brick fence.

Integrity

The dwellings within the row retain a high degree of integrity to the Federation Queen Anne style in fabric, form and detail. While all houses have undergone some alterations and additions, these do not diminish the ability to understand and appreciate the place as a fine example of a row of Federation houses.

This place/object may be included in the Victorian Heritage Register pursuant to the Heritage Act 2017. Check the Victorian Heritage Database, selecting 'Heritage Victoria' as the place source.

For further details about Heritage Overlay places, contact the relevant local council or go to Planning Schemes Online <http://planningschemes.dpcd.vic.gov.au/>