

Elevated Townhouses



Elevated Townhouses 23
Seymour Road Elsternwick
August 2019-1



Elevated Townhouses 23
Seymour Road Elsternwick
August 2019-3-South facade



Elevated Townhouses 23
Seymour Road Elsternwick
August 2019-4-East Elevation



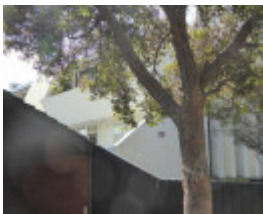
Elevated Townhouses 23
Seymour Road Elsternwick
August 2019-5-South Facade



Elevated Townhouses 23
Seymour Road Elsternwick
August 2019-6-South Facade



Elevated Townhouses 23
Seymour Road Elsternwick
August 2019-7-South Facade



Elevated Townhouses 23
Seymour Road Elsternwick
August 2019-8-Window
Hoods



Elevated Townhouses 23
Seymour Road Elsternwick
August 2019-9



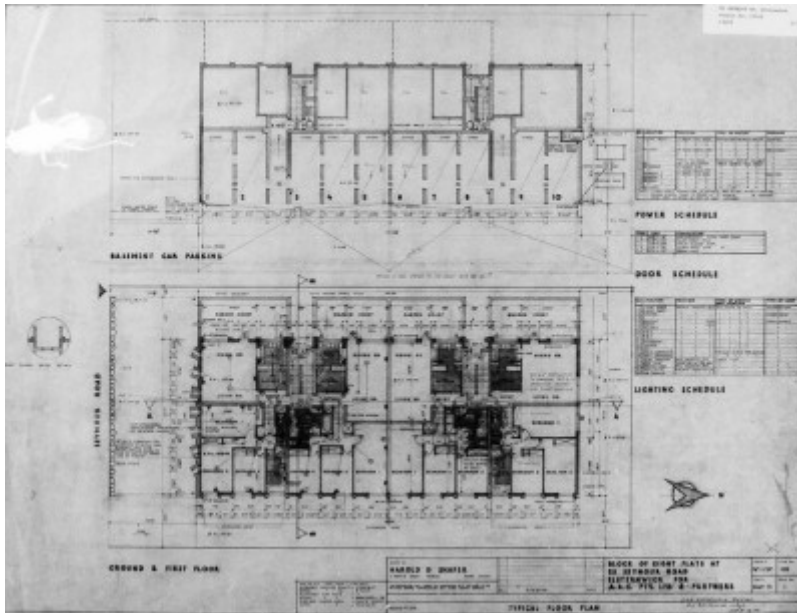
Elevated Townhouses 23
Seymour Road Elsternwick
August 2019-10-From 1977



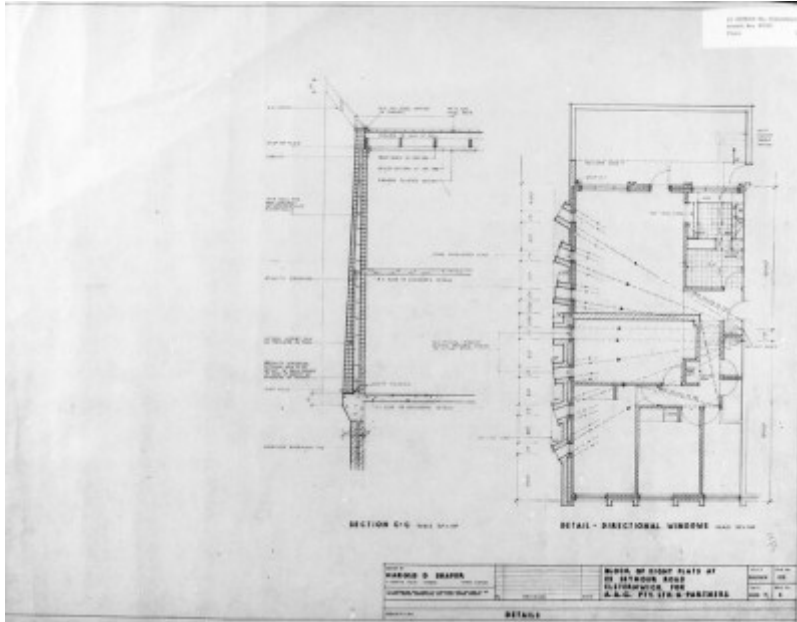
Elevated Townhouses 23
Seymour Road Elsternwick
August 2019-11-From 1977



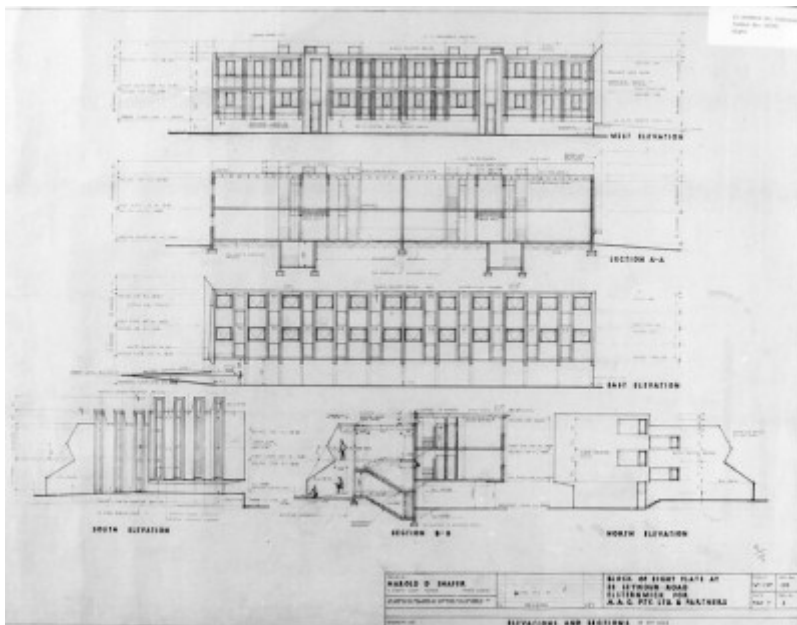
Elevated Townhouses 23 Seymour Road Elsternwick August 2019-2



Elevated Townhouses 23 Seymour Road Elsternwick August 2019-12-Submitted ground floor



Elevated Townhouses 23 Seymour Road Elsternwick August 2019-13-Submitted details



Elevated Townhouses 23 Seymour Road Elsternwick August 2019-14-Submitted



Elevated Townhouses 23 Seymour Road Elsternwick August 2019-15

Location

23 SEYMOUR ROAD ELSTERNWICK, GLEN EIRA CITY

Municipality

GLEN EIRA CITY

Level of significance

Incl in HO: Individually Significant

Heritage Overlay Numbers

HO194

Heritage Listing

Glen Eira City

Heritage Study/Consultant	Glen Eira Heritage Review of Elsternwick Structure Plan Area, RBA Architects and Conservation Consultants PTY LTD, 2019;
Hermes Number	210683
Property Number	

This place/object may be included in the Victorian Heritage Register pursuant to the Heritage Act 2017. Check the Victorian Heritage Database, selecting 'Heritage Victoria' as the place source.

For further details about Heritage Overlay places, contact the relevant local council or go to Planning Schemes Online <http://planningschemes.dpcd.vic.gov.au/>