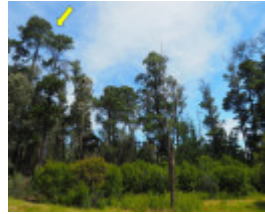

PINUS ATTENUATA



Picture2



Picture1



Picture3



Picture4

Location

TOURIST ROAD CRESWICK, HEPBURN SHIRE

Municipality

HEPBURN SHIRE

Level of significance

State

Heritage Listing

National Trust

Statement of Significance

Last updated on - December 5, 2023

What is significant?

A pair of Knobcone Pines in a stand of 14 trees located directly north of the reception carpark and gym at the University of Melbourne Creswick campus.

How is it significant?

These 2 Knobcone Pines are significant for scientific reasons (horticultural/genetic value, important source of seed stock, a species that is rare, outstanding size and old age) at the State level.

Why is it significant?

This collection of Knobcone Pines is the only known occurrence of this species in Victoria. These trees were planted with a wide range of other species in and around the Victorian School of Forestry (now the Creswick Campus of the University of Melbourne). The school adjoins the old forest nursery in Sawpit Gully where extensive species trials were undertaken from the 1880's onwards. The Knobcone Pines were most likely planted around 1920-1930.

In 1977, the area was burnt in an extensive fire. Many trees were damaged and still show the scars. This fire damage may be responsible for the poor health of the trees. Fourteen trees remain alive. The two significant Knobcone Pines are the healthiest of those remaining.

These trees are at the upper end of the size that this species is known to grow in their native habitat (western USA), therefore they are genetically important. The height and diameter of the trees are larger than the normal size range in its natural environment, but the trees are not as large as the largest ever recorded in the USA. This species is not long-lived, is often of poor form with little timber value, but has horticultural value.

Measurements: 09/12/2022

Tree 1:

Spread (m): NS 8.5, EW 7

Girth (m): 2.03

Height (m): 24

Tree 2:

Spread (m): NS 6.7, EW 7

Girth (m): 1.84

Height (m): 24.2

Estimated age (yrs): 80-100

Condition: Fair

Access: Unrestricted

Classified: 28/08/2023

Other Names Knobcone Pine,

Hermes Number 211058

Property Number

This place/object may be included in the Victorian Heritage Register pursuant to the Heritage Act 2017. Check the Victorian Heritage Database, selecting 'Heritage Victoria' as the place source.

For further details about Heritage Overlay places, contact the relevant local council or go to Planning Schemes Online <http://planningschemes.dpcd.vic.gov.au/>