
Residence



371-399 Lake Road,
Connewarre - Exterior Front
View



371-399 Lake Road,
Connewarre - Exterior Side
View



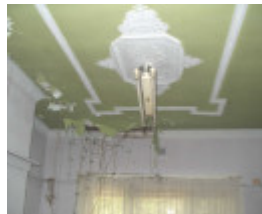
371-399 Lake Road,
Connewarre - Exterior Back
View



371-399 Lake Road,
Connewarre - Exterior Side
View - 2



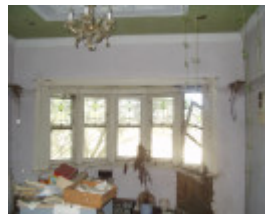
371-399 Lake Road,
Connewarre - Interior Hallway



371-399 Lake Road,
Connewarre - Interior Ceiling
- 1



371-399 Lake Road,
Connewarre - Interior Ceiling
- 2



371-399 Lake Road,
Connewarre - Interior Front
room



371-399 Lake Road,
Connewarre - Exterior
Verandah



371-399 Lake Road,
Connewarre - Exterior
Verandah Roof

Location

371-399 Lake Road, CONNEWARRE VIC 3227 - Property No 231551

Municipality

GREATER GEELONG CITY

Level of significance

Included in Heritage Overlay

Heritage Overlay Numbers

HO1714

Heritage Listing

Greater Geelong City

Statement of Significance

Last updated on -

C Listed - Local Significance

The house at 371-399 Lake Road is aesthetically significant at a LOCAL level. It demonstrates original design qualities of the interwar Californian Bungalow style. These qualities include the dominant, traversing gable roof, and two minor gables that project towards the south. Other intact qualities include the lapped galvanised corrugated iron roof cladding, horizontal weatherboard wall cladding, unpainted brick chimney, wide eaves, timber framed double hung windows, flat roofed bay window, round concrete Doric verandah columns and brick piers with concrete cappings, solid brick balustrade, and the gable infill. The early substantial exotic and other trees contribute to the significance of the place. The house at 371-399 Lake Road is historically significant at a LOCAL level. The site is associated with James Noble, early landholder who was the first president of the Connewarre Roads Board, and the established of his farm from the mid 19th century. Additional research and physical investigation may also ascertain a further level of historical significance. Overall, the house at 371399 Lake Road is of LOCAL significance. Statement of Cultural Significance

References

1. Parish of Connewarre maps, 5 October, 1878, 7 December, 1903 amp undated, Geelong Historical Records Centre. 2. Shire of South Barwon Rate Books, 188384, 188889, 189394, 189990, 190809, 190910, 192324, 193637. 3. Pescott, South Barwon 18571985, p.130. 4. Information provided verbally to City of Greater Geelong by owner in 2001. References

Heritage Study/Consultant	Greater Geelong - Greater Geelong Outer Areas Heritage Study Volumes 1, 2 & 4, Authentic Heritage Services Pty Ltd, 2000;
Heritage Act Categories	Registered place,
Hermes Number	21324

Property Number

Physical Description 1

The house at 371-399 Lake Road is surrounded by early, substantial exotic pine and other trees. There may be other, earlier outbuildings including a cottage behind the trees. The single storey, asymmetrical, horizontal weatherboard interwar Californian Bungalow house is characterised by a dominant traversing gable roof, and two minor gables that project towards the south. These roof forms are clad in lapped galvanised corrugated iron. An early, unpainted brick chimney adorns the roofline. Wide overhangs are a feature of the eaves. The early timber framed double hung windows are arranged as a horizontal bank of three under the projecting verandah gable and as a projecting, flat roof bay. The timber and glazed door and sidelight may be early. A feature of the design is the projecting verandah gable. It is supported by early, round concrete Doric columns which in turn are supported by brick piers with concrete cappings. A solid brick balustrade appears to form the verandah boundary. Early decorative features of the design include the gable infill. Description

This place/object may be included in the Victorian Heritage Register pursuant to the Heritage Act 2017. Check the Victorian Heritage Database, selecting 'Heritage Victoria' as the place source.

For further details about Heritage Overlay places, contact the relevant local council or go to Planning Schemes Online <http://planningschemes.dpcd.vic.gov.au/>