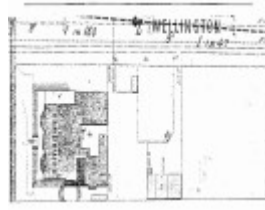

Comaques



City of Kew Urban
Conservation Study 1988



City of Kew Urban
Conservation Study 1988

Location

896 Glenferrie Road KEW, Boroondara City

Municipality

BOROONDARA CITY

Level of significance

Included in Heritage Overlay

Heritage Overlay Numbers

HO203

HO150

Heritage Listing

Boroondara City

Statement of Significance

Last updated on -

HO150 Glenferrie Road Precinct, Kew

The Glenferrie Road Precinct, Kew, is an area of heritage significance for the following reasons:

-The western parts of this precinct are marked by mansion development of the Victorian period, and though some are surrounded by unsympathetic later development, a significant number of individually significant early Kew mansions survive here, albeit in some cases converted to institutional uses. This is one of three notable mansion precincts in Kew, the others being HO158 (Walmer Street) and HO162 (Sackville Street).

- The eastern section of the precinct is significant for its mixture of small and medium scale Victorian housing, much of which relates to two important 1880s estates : Edgevale and Doona Hill.

- The area has a strong visual connection with several fine assemblages of school buildings: either in its midst (Ruyton) or at its borders (Trinity, Xavier, Methodist Ladies' College).

- The area includes the former Kew civic buildings and the Sacred Heart Church and School, both in Cotham Road, the latter important to the considerable Roman Catholic heritage in the area.

- The area also includes the entire Glenferrie Road streetscape north of Barkers Road up to Wellington Street, including two of MLC's most important buildings and a mixed 1880s to interwar streetscape.

- The area includes a number of individually significant architectural designs, the majority of which are Victorian mansions.

Heritage Study/Consultant	Boroondara - City of Kew Urban Conservation Study, Pru Sanderson Design Pty Ltd, 1988;
Hermes Number	22322
Property Number	

Physical Description 1

The first documentary evidence of this two-storey mansion comes from Rate Books that record the leading architect Alfred White as the original owner and occupier of this building.'. Having an initial N.A.V. of £160 [4], the house was purchased by a warehouseman Henry Lister, by 1900, when the N.A.V. was recorded at £111 [5]. By the turn of the century the house was known as 'Comaques' [6]. White's house is a two storeyed rendered mansion and is composed and decorated in the Italianate style. It is dominated by a balustraded three storeyed tower over the front entrance that is flanked by two polygonal bay window units. A two storeyed loggia spans down the Wellington Street facade. The house remains substantially intact although the roof has been replaced by a terracotta tile roof and some of the parapet decoration has been removed. Although quite typical of the Italianate design of the time, it is unusually extensive in scale. 'Comaques', 1903 (MMBW Plan No.1574)

References --

1 City of Kew, Rate Books, 1891

2 ibid.

3 ibid.

4 ibid.

5 ibid., 1900

6 M.M.B.W., 'Plan of Kew - 1574', Scale:40 feet to 1 inch, May 1903

This place/object may be included in the Victorian Heritage Register pursuant to the Heritage Act 2017. Check the Victorian Heritage Database, selecting 'Heritage Victoria' as the place source.

For further details about Heritage Overlay places, contact the relevant local council or go to Planning Schemes Online <http://planningschemes.dpcd.vic.gov.au/>