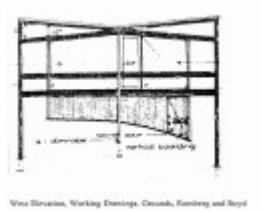

Clemson House



City of Kew Urban
Conservation Study 1988



City of Kew Urban
Conservation Study 1988

Location

24 Milfay Avenue KEW, Boroondara City

Municipality

BOROONDARA CITY

Level of significance

Included in Heritage Overlay

Victorian Heritage Register (VHR) Number

H2006

Heritage Overlay Numbers

HO251

Heritage Listing

Boroondara City

Statement of Significance

Last updated on -

24 Milfay Avenue is of significance as a substantially intact example of an early design by the leading firm Grounds, Romberg and Boyd that is both innovative in its structural system and effective on its steep site.

Heritage Study/Consultant	Boroondara - City of Kew Urban Conservation Study, Pru Sanderson Design Pty Ltd, 1988;
Architect/Designer	Grounds Romberg & Boyd,
Hermes Number	22334
Property Number	

Physical Description 1

24 Milfay Avenue is one of the earliest modern houses in Melbourne, and is a good example of the bold forms that became a hallmark of 1950s design. The house has the invention and skill in its design that came to be expected of its designers; one of the most prominent architectural partnerships at the time. The most innovative part of the design is the 'V-shaped channel that serves as the roof. It rests on the upper faces of a series of crossed support beams, while the ceiling is suspended from their lower faces, creating a floating appearance. It is a form particularly sympathetic to the steep site, allowing the house to step down the site under the clean sweep of the roof. The house remains substantially intact.

1 Working Drawings lodged with the Kew City Council in application for a Building Permit. Drawing received by the Council 6 November 1959.

2 *ibid.*

This place/object may be included in the Victorian Heritage Register pursuant to the Heritage Act 2017. Check the Victorian Heritage Database, selecting 'Heritage Victoria' as the place source.

For further details about Heritage Overlay places, contact the relevant local council or go to Planning Schemes Online <http://planningschemes.dpcd.vic.gov.au/>