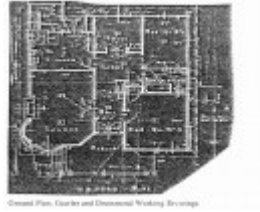


---

# Neville House



City of Kew Urban  
Conservation Study 1988



City of Kew Urban  
Conservation Study 1988

---

## Location

96 Kilby Road KEW EAST, BOROONDARA CITY

## Municipality

BOROONDARA CITY

## Level of significance

Included in Heritage Overlay

## Heritage Overlay Numbers

HO75

## Heritage Listing

Boroondara City

---

## Statement of Significance

Last updated on -

96 Kilby Road is of significance as one of the first intentional applications of brick veneer construction in Melbourne, and as a precursor of the widespread use of that construction technique.

Heritage Study/Consultant	Boroondara - City of Kew Urban Conservation Study, Pru Sanderson Design Pty Ltd, 1988;
Hermes Number	22349
Property Number	

---

## Physical Description 1

The house at 96 Kilby Road is one of the earliest examples of brick veneer construction in Melbourne, and is the earliest known example of the coinage of the term 'brick veneer', which appears on the working drawings for the house.<sup>3</sup> The term, used by Gawler and Drummond to describe the building technique used for the lower walls of the house, was to become extremely common in the years that followed. Stylistically the house is a good example of a modest house of the mid 1920s.

References --

1 Gawler and Drummond working drawings, Job No.2434, 15 September 1924, (Copies held by Dr M. B. Lewis, University of Melbourne)

2 *ibid.*

3 Information supplied by Dr M.B.Lewis

Ground Plan, Gawler and Drummond Working Drawings

*This place/object may be included in the Victorian Heritage Register pursuant to the Heritage Act 2017. Check the Victorian Heritage Database, selecting 'Heritage Victoria' as the place source.*

*For further details about Heritage Overlay places, contact the relevant local council or go to Planning Schemes Online <http://planningschemes.dpcd.vic.gov.au/>*