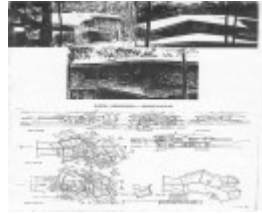


---

# ROBERT AND ELIZABETH LEY HOUSE



22492 Robert and Elizabeth Ley House - 58 Berrima Road, Donvale (1)



22492 Floor Pland & Elevations of Robert and Elizabeth Ley House - 58 Berrima Road, Donvale

---

## Location

58 Berrima Road DONVALE, Manningham City

## Municipality

MANNINGHAM CITY

## Level of significance

Included in Heritage Overlay

## Heritage Overlay Numbers

HO15

## Heritage Listing

Manningham City

---

## Statement of Significance

Last updated on -

Of local significance

Heritage Study/Consultant Manningham - Manningham Heritage Study Review, Context Pty Ltd, 2006;

Hermes Number 22492

Property Number

---

## Historical Australian Themes

Local Themes

8.02 - Architects

## Physical Description 1

A two-storey orange brick house, with low-pitched gable, corrugated steel roofs, on a native bushland setting overlooking Mullum Mullum Creek. A tightly designed, but otherwise characteristically organic, prismatic plan, something like a two headed fish. The construction is conventional.

It is a characteristic and tightly designed work by Burgess in his virtually unique organic approach. It is importantly complements the much more sprawling 42 Berrima Road as a pair.

## Physical Conditions

**Condition** Excellent

## Integrity

**Integrity** Intact

*This place/object may be included in the Victorian Heritage Register pursuant to the Heritage Act 2017. Check the Victorian Heritage Database, selecting 'Heritage Victoria' as the place source.*

*For further details about Heritage Overlay places, contact the relevant local council or go to Planning Schemes Online <http://planningschemes.dpcd.vic.gov.au/>*