

---

## HOUSE AT 318 Yarra Street



22705 House - 318 Yarra Street (165 Brackenbury St), Warrandyte



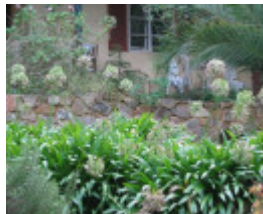
22705 House - 318 Yarra Street, Warrandyte



22705 House - 318 Yarra Street, Warrandyte



22705 House - 318 Yarra Street, Warrandyte



22705 Garden - 318 Yarra Street, Warrandyte

---

### Location

318 Yarra Street and 165 Brackenbury Street WARRANDYTE, Manningham City

### Municipality

MANNINGHAM CITY

### Level of significance

Included in Heritage Overlay

### Heritage Overlay Numbers

HO23

### Heritage Listing

Manningham City

---

## Statement of Significance

Last updated on -

What is Significant?

The house at 318 Yarra Street, Warrandyte is a random rubble sandstone house built by Myrtle Houston about 1940 with help from Alexa Goyder.

How is it Significant?

The house at 318 Yarra Street, Warrandyte is of local historical and architectural significance to Manningham City.

Why is it Significant?

The house at 318 Yarra Street, Warrandyte is of historical and architectural significance as a particularly intact work by the local female builder, Myrtle Houston. It demonstrates her creative contribution to the building tradition of Warrandyte. (RNE criteria A.4, D.2 and H.1)

Heritage Study/Consultant Manningham - Manningham Heritage Study Review, Context Pty Ltd, 2006;

Hermes Number 22705

Property Number

---

## Historical Australian Themes

Local Themes

7.07 - Warrandyte stone buildings

## Physical Description 1

The house at 318 Yarra Street, Warrandyte is constructed of Mt Gambier limestone as a long low pavilion. The low hipped roof incorporates a verandah at the front and right hand side and there is a skillion extension at the rear. There is one chimney.

There is a stone garage at right to the front of the house and two other asbestos cement outbuildings. The buildings are set within mature gardens.

## Physical Conditions

**Condition** Good

## Physical Description 2

Associations

Myrtle Houston

*This place/object may be included in the Victorian Heritage Register pursuant to the Heritage Act 2017. Check the Victorian Heritage Database, selecting 'Heritage Victoria' as the place source.*

*For further details about Heritage Overlay places, contact the relevant local council or go to Planning Schemes Online <http://planningschemes.dpcd.vic.gov.au/>*