

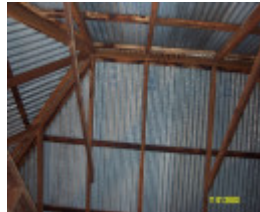
ENGLEFIELD WOOLSHED AND MEN'S QUARTERS (FORMER)



23424 Englefield Balmoral
former men s quarters 2327



23424 Englefield Balmoral
former men s quarters 2328



23424 Englefield Balmoral
former men s quarters 2329



23424 Englefield Balmoral
former men s quarters 2330



23424 Englefield Balmoral
former men s quarters 2331



23424 Englefield Balmoral
former men s quarters 2333



23424 Englefield Balmoral
former men s quarters 2334



23424 Englefield Balmoral
former men s quarters 2335



23424 Englefield Balmoral
former woolshed 2319



23424 Englefield Balmoral
former woolshed 2318



23424 Englefield Balmoral
former woolshed 2320



23424 Englefield Balmoral
former woolshed 2323



23424 Englefield Balmoral
former woolshed 2324



23424 Englefield Balmoral
former woolshed 2325



23424 Englefield Balmoral
former woolshed gates 2321



23424 Englefield Balmoral
former woolshed gateway
2322



23424 Englefield Balmoral
former woolshed stumps
2326

Location

Natimuk-Hamilton Road BALMORAL, Southern Grampians Shire

Municipality

SOUTHERN GRAMPIANS SHIRE

Level of significance

Stage 2 study complete

Heritage Listing

Southern Grampians Shire

Statement of Significance

Last updated on -

What is significant?

The Englefield Woolshed and Men's Quarters are located about 1.6kms south of Balmoral on a rise overlooking a creek which runs into the Glenelg River. Originally, the property straddled the Natimuk-Hamilton Road, the principal route north into the Wimmera from the coastal ports. The homestead complex began in the early 1840s during the occupation of the brothers William Montgomery and Henrie Bell, successful Melbourne merchants, the former being Melbourne's fifth Lord Mayor. but the woolshed from this time does not survive. Between 1853 and 1860, Englefield was occupied by Anne Greene, with her son William Frederick, but in her own right. She was the widow of William Pomeroy Greene, one of the earliest squatters in the Port Phillip District. Duncan Robertson, the next occupant, purchased the Englefield Pre-emptive right. He was a member of the large Western District family of Robertsons and Philips. It is possible that he built the woolshed and men's quarters in the 1860s. In the 1890s,

Englefield was again owned by absentee proprietors, this time some of Melbourne's most notorious property speculators. Their proposal to subdivide the land for fruit and nut farms failed. John and Kathrin Philip purchased the Englefield freehold in 1901 and over the next few years added a major extension in front of the original dwelling. John Philip was a leader in the broader community. The land was then purchased and subdivided under the Closer Settlement Scheme and the Soldier Settlement Scheme. Englefield woolshed retains a fair degree of integrity and is in good condition. The men's quarters retain a good degree of integrity but are in a very poor condition.

How is it significant?

Englefield woolshed and men's quarters are of historical, social and architectural significance to the community of Balmoral and to the Southern Grampians Shire.

Why is it significant?

Englefield woolshed and men's quarters are of historical significance because of its connection with its later owners including Robertson and Philip families. Englefield is of social significance because the Robertson and Philip families combined represent one of the most extensive and influential dynasties across the Western District. Although altered, Englefield woolshed and men's quarters are of architectural significance as a typical example of such building types.

Heritage Study/Consultant	Southern Grampians - Southern Grampians Shire Heritage Study, Timothy Hubbard P/L, Annabel Neylon, 2002;
Construction dates	1860,
Heritage Act Categories	Registered place,
Hermes Number	23424
Property Number	

Physical Conditions

Woolshed is in good condition

Men's Quarters and in poor condition

Physical Description 1

The woolshed is constructed on sloping ground on the east side of the Natimuk-Hamilton Road and on the opposite side of the road from the homestead complex. It is T-shaped in plan, probably built in two stages. The older wing is partly clad in weatherboards with a monitor for the old wool press extending through its hipped roof. The newer wing has a double hipped roof. It is a large hardwood timber framed building now clad in corrugated iron. It stands on timber-in-the- round stumps with what appear to be pit-sawn hardwood joists and bearers. The floor is either traditional battens or more modern pine floorboard. The original pen doors are made from two timber beaded-edge boards of a fine pine, possibly Kauri, with two rails. Each has a number in a blue circle painted on the inside. The posts supporting the roof at the corners of the pens are adzed timber with arrises. There is a modern extension of covered yards. Close to the northern corner of the woolshed there is a large well which was linked to the homestead by means of channels.

The men's quarters are located about 200m from the woolshed. They are approximately 18m long and 10ms deep. They are single storey, timber framed and clad with weatherboards. The corrugated iron roof has two hips parallel to the facade or west elevation. There are four ledge and brace doors in the facade giving access to small bedrooms. The dado section of the facade has been re-clad in corrugated iron. The windows are all twelve paned double-hung sashes without counterweights. There is a brick chimney on the east elevation. Another, on the south elevation associated with the kitchen in the south-east corner, has a large open heath partly filled by a

1930s stove and baker's oven. This has remnants of limewash on the internal surface. Much of the lining of the internal walls and some of the framing has been removed.

Outside the back door there is an old corrugated iron kennel. There is a large old fruit tree near the kitchen, possibly a plum tree or other *Prunus* species. Some distance to the north-east of the men's quarters there is a large remnant Red Gum, *Eucalyptus camaldulensis* which appears to have been used for slaughtering and hanging meat.

Historical Australian Themes

Theme 3: Developing local, regional and national economies

3.5 Developing primary production

3.5.1 Grazing stock

3.5.2 Breeding animals

3.5.3 Developing agricultural industries

Theme 5: Working

5.8 working on the land

Usage/Former Usage

woolshed still in use but men's quarters abandoned

Integrity

Both buildings have a high degree of integrity.

Physical Description 2

William Montgomery Bell and Henrie Bell of Bell & Co, merchants, first and third owners

Edward Barker, second owner

Robert Clerk, fourth owner

Anne Greene, with her son William Frederick Greene, fifth owner

Duncan Robertson, sixth owner

James Mirams, Freehold Farms Co. Ltd., seventh owner

Gotch, Chrystal, LeFevre and Co., eighth owner

R. Douglas, manager

John Philip, ninth owner

Alexander Stuart Philip, manager

This place/object may be included in the Victorian Heritage Register pursuant to the Heritage Act 2017. Check the Victorian Heritage Database, selecting 'Heritage Victoria' as the place source.

For further details about Heritage Overlay places, contact the relevant local council or go to Planning Schemes Online <http://planningschemes.dpcd.vic.gov.au/>