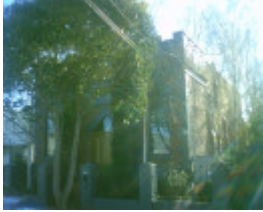

Residence



18 Marshall Street, Newtown

Location

18 Marshall Street, NEWTOWN VIC 3220 - Property No 202794

Municipality

GREATER GEELONG CITY

Level of significance

Included in Heritage Overlay

Heritage Overlay Numbers

HO1939

Heritage Listing

Greater Geelong City

Statement of Significance

Last updated on -

Statement of Significance

The former Salvation Army Hall at 18 Marshall Street, Newtown, has significance as the earliest surviving purpose-built Salvation Army building and as one of few examples of a Victorian Tudor style in the Greater Geelong municipality. Built in 1889 to a design by the Melbourne architect, William Rain, progenitor of a number of Salvation Army barracks in the late 1880s, the building served the Salvation Army in Chilwell until the early 1980s. The former Salvation Army Hall appears to be in good condition and of moderate-high integrity when

viewed from the street.

The former Salvation Army Hall at 18 Marshall Street is architecturally significant at a LOCAL level (AHC D.2, E.1). Although partly altered, it demonstrates original design qualities of a Victorian Tudor style, representing a rare example of its type in the Greater Geelong area. These qualities include the main front facade with slightly recessive central gabled bay and flanking projecting pavilions with battlemented parapets, together with the gable roof behind. Other intact or appropriate qualities include the brick wall construction, corrugated profile sheet metal roof cladding, rendered dressings (quoinwork, stringcourses, signage panel, window and door heads - but not the overpainting), pointed window and door heads, timber framed double hung windows, oculus ventilator in the gable end (with label mould above) and the side projecting buttresses and some window openings.

The former Salvation Army Hall at 18 Marshall Street, is historically significant at a LOCAL level (AHC A.4, H.1). It is associated with the development of the Salvation Army in Newtown from 1889 until the early 1980s and is a physical legacy of the aspirations and ideology of the non-conformist Christian denomination in the late 19th century. The building also has associations with the Melbourne architect, William Rain, who was responsible for the designs of at least 6 other Salvation Army barracks in the late 1880s.

Overall, the former Salvation Army Hall at 18 Marshall Street is of **LOCAL** significance.

Recommendations

Heritage Overlay Schedule Controls

External Paint Controls: Yes

Internal Alteration Controls: No

Tree Controls: No

Outbuildings and/or Fences: No

Extent of Heritage Overlay & Significance

The HO apply to the whole of the site.

Other Recommendations:

Nil

References

City of Newtown and Chilwell Rate Books 1860-1950, digital copies on CD, Geelong Heritage Centre.

Geelong Waterworks and Sewerage Plan of Drainage 089_016 (1911).

Margaret Frewin & Lorraine Phelan, *Churches of Geelong & District Vol 1 Pre-1900 Geelong & District*, Geelong Family History Group Inc., Geelong, 2003, p. 117.

Wynd photograph collection, Geelong Heritage Centre.

M. Lewis (ed.), *Victorian Churches: their origins, their story and their architecture*, National Trust of Australia (Victoria), Melbourne, 1991.

M. Lewis (ed.), *Australian Architectural Index*, revd. edn., University of Melbourne, 2000.

W.R. Brownhill & I. Wynd, *History of Geelong & Corio Bay With Postscript 1955-1990*, Geelong Advertiser, Geelong, 1990.

'Former Geelong Grammar School, H188' & 'Former St. Giles Church & Free School Church, H633', Victorian Heritage Database online, www.heritage.vic.gov.au, September 2008.

Aitken, Honman & Huddle, 'City of Geelong West Urban Conservation Study', prepared for the City of Geelong West, vol. 2, 1986.

Heritage Study/Consultant	Greater Geelong - Newtown Heritage Study 2008 Vol 1-3, City of Greater Geelong, 2008;
Heritage Act Categories	Registered place,
Hermes Number	25232
Property Number	

Physical Description 1

Description

Salvation Army hall at 18 Marshall Street is set on an average sized allotment for the area. It has a contextually small front setback with an introduced front fence comprised of pointed rendered piers with bays of cast iron palisades between.

The symmetrical, unpainted brick, Victorian Tudor styled former Salvation Army hall has a front facade featuring a slightly recessive central gabled bay and flanking projecting pavilions with battlemented parapets. These parapets, together with the other original cement rendered dressings (quoinwork, stringcourses, signage panel, window and door heads) have introduced overpainting. Behind the main facade is a gable roof form clad in corrugated profile sheet metal.

Other features of the design include the pointed window and door openings, timber framed double hung windows, oculus ventilator in the gable end (with label mould above) and the side projecting buttresses and some window openings. The vertically-boarded timber doors and triangular transom above have been introduced within the original door opening. At the rear are also later additions. At the side, some of the first floor windows appear to have been bricked up and/or altered.

Integrity

Integrity

Moderate-High Integrity.

Physical Conditions

Condition

Good.

This place/object may be included in the Victorian Heritage Register pursuant to the Heritage Act 2017. Check the Victorian Heritage Database, selecting 'Heritage Victoria' as the place source.

For further details about Heritage Overlay places, contact the relevant local council or go to Planning Schemes Online <http://planningschemes.dpcd.vic.gov.au/>