

KAWEKA



h00721 1 kaweka hargreaves street castlemaine house from drive she project 2003



h00721 kaweka hargreaves street castlemaine front of home she project 2003

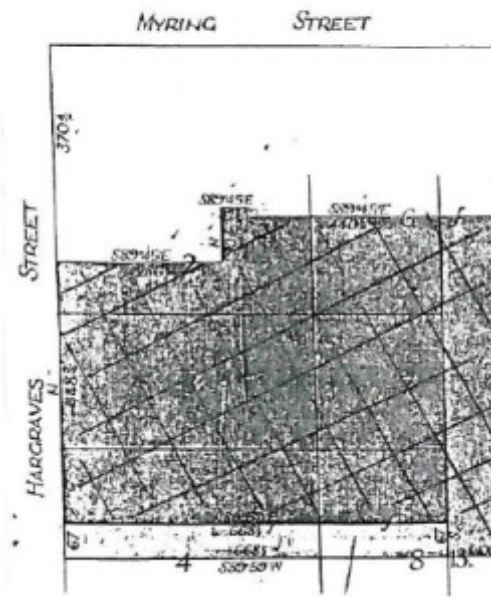


h00721 kaweka hargreaves street castlemaine east side she project 2003



h00721 kaweka hargreaves street castlemaine house from pond she project 2003

EXTENT OF DESIGNATION
(SUMMARY)



H0721 H0721 plan

Location

184 HARGRAVES STREET CASTLEMAINE, MOUNT ALEXANDER SHIRE

Municipality

MOUNT ALEXANDER SHIRE

Level of significance

Registered

Victorian Heritage Register (VHR) Number

H0721

Heritage Overlay Numbers

HO626

VHR Registration

December 21, 1988

Heritage Listing

Statement of Significance

Last updated on - June 28, 1999

Kaweka was constructed in 1896 as a residence for John S Thompson an iron founder of Thompsons Foundry, the builder being HD McBean. Thompson lived at the house till his death in 1910 after which it was acquired by FS Newell a solicitor.

The house is constructed of face brick and has a corrugated iron roof. The house is broad across its main facade with a central projection and a verandah across the front and returning around the projection. The main feature of the house is the timber verandah which is of classical inspiration. It has slender Tuscan columns, paired under the central and side broken pediments, and the eaves are decorated with broken pediments, and the eaves are decorated with representations of the Greek antefixae and paved consoles under the pediments. The verandah is supported on a stone plinth with central steps.

It is a grand country house of the 1890s that has unusual verandah detailing and important connections with one of Castlemaine's most important families.

[From CC 115 agenda papers 29/05/86]

Permit Exemptions

General Exemptions:

General exemptions apply to all places and objects included in the Victorian Heritage Register (VHR). General exemptions have been designed to allow everyday activities, maintenance and changes to your property, which don't harm its cultural heritage significance, to proceed without the need to obtain approvals under the Heritage Act 2017.

Places of worship: In some circumstances, you can alter a place of worship to accommodate religious practices without a permit, but you must **notify** the Executive Director of Heritage Victoria before you start the works or activities at least 20 business days before the works or activities are to commence.

Subdivision/consolidation: Permit exemptions exist for some subdivisions and consolidations. If the subdivision or consolidation is in accordance with a planning permit granted under Part 4 of the *Planning and Environment Act 1987* and the application for the planning permit was referred to the Executive Director of Heritage Victoria as a determining referral authority, a permit is not required.

Specific exemptions may also apply to your registered place or object. If applicable, these are listed below. Specific exemptions are tailored to the conservation and management needs of an individual registered place or object and set out works and activities that are exempt from the requirements of a permit. Specific exemptions prevail if they conflict with general exemptions.

Find out more about heritage permit exemptions [here](#).

Construction dates 1896,

Heritage Act Categories Registered place,

Hermes Number 261

Property Number

Extent of Registration

AMENDMENT OF REGISTER OF HISTORIC BUILDINGS

Historic Building No. 721.

Kaweka - 184 Hargreaves Street, Castlemaine

to the extent of the land and buildings shown hatched which are included in the Register Book Certificate of Title Volume 6284 Folio 1289240.

[*Victoria Government Gazette* G49 21 December 1988 p.3902]

This place/object may be included in the Victorian Heritage Register pursuant to the Heritage Act 2017. Check the Victorian Heritage Database, selecting 'Heritage Victoria' as the place source.

For further details about Heritage Overlay places, contact the relevant local council or go to Planning Schemes Online <http://planningschemes.dpcd.vic.gov.au/>