

CHEWTON TOWN HALL



CHEWTON TOWN HALL SOHE 2008



h01015 1 chewton town hall pyrenees highway chewton front she project 2003



chewton town hall pyrenees highway chewton interior she project 2003



chewton town hall pyrenees highway chewton portable police lock up she project 2003



chewton town hall pyrenees highway chewton town hall and post office she project 2003



chewton town hall pyrenees highway chewton west wall she project 2003



h01015 chewton town hall pyrenees hwy chewton front view sep1988



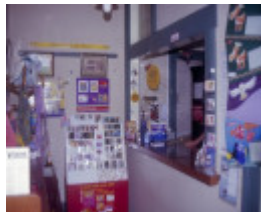
Former Chewton Post Office Pyrenees Hwy Chewton Front and East Wall SHE Project 2004



Former Chewton Post Office Pyrenees Hwy Chewton North East Conrner SHE Project 2004



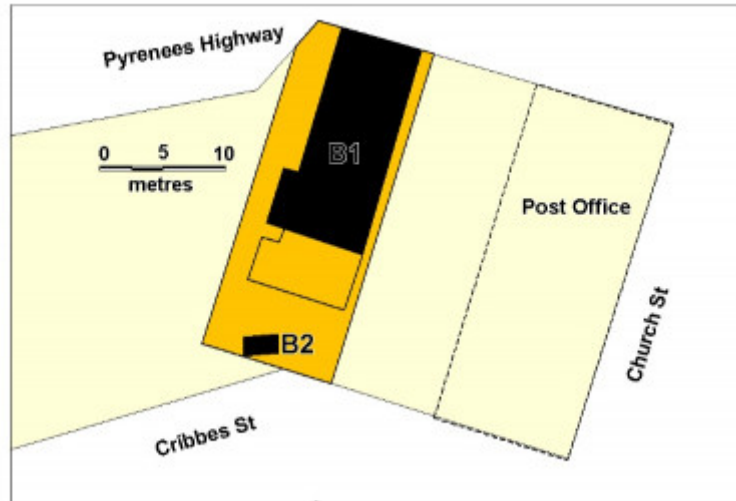
Former Chewton Post Office Pyrenees Hwy Post Office and Town Hall SHE Project 2004



Former Chewton Post Office Pyrenees Hwy Chewton Public Space SHE Project 2004



Former Chewton Post Office Pyrenees Hwy Chewton Front Sorting Mailbox SHE Project 2004



chewton town hall plan

Location

145 MAIN ROAD CHEWTON, MOUNT ALEXANDER SHIRE

Municipality

MOUNT ALEXANDER SHIRE

Level of significance

Registered

Victorian Heritage Register (VHR) Number

H1015

Heritage Overlay Numbers

HO725

VHR Registration

August 20, 1982

Heritage Listing

Victorian Heritage Register

Statement of Significance

Last updated on - May 4, 1999

The Chewton town hall is the one of the few surviving structure evidencing the operation of the former Borough of Chewton, which existed between 1860 and 1916. It is one of the few buildings in the shire of Metcalfe to survive from the gold rush period of the 1850s. It is a substantially intact and rare example of a small town hall.

The Chewton town hall evidences a wide range of private and public uses reflecting the varying fortunes of an area of settlement that is of central importance in the history of the Colony of Victoria.

Construction dates 1861,
Heritage Act Categories Registered place,
Hermes Number 2697
Property Number

Extent of Registration

AMENDMENT OF REGISTER OF HISTORIC BUILDINGS

Historic Building No. 1015.

Town Hall, Pyrennees Highway, Chewton, Shire of Metcalfe.

(To the extent of:

All of the building known as Chewton Town Hall marked B1 on Plan No. 605359, signed by the Chairperson, Historic Buildings Council and held by the Director, Historic Buildings Council; and

All of the land marked L1 on Plan No. 605359 signed by the Chairperson, Historic Buildings Council and held by the Director, Historic Buildings Council, being all the land described in Crown Allotment 9, Section F, Parish of Chewton, County of Talbot.)

[Victoria Government Gazette No. G18 5 May 1994 p.1102]

This place/object may be included in the Victorian Heritage Register pursuant to the Heritage Act 2017. Check the Victorian Heritage Database, selecting 'Heritage Victoria' as the place source.

For further details about Heritage Overlay places, contact the relevant local council or go to Planning Schemes Online <http://planningschemes.dpcd.vic.gov.au/>