

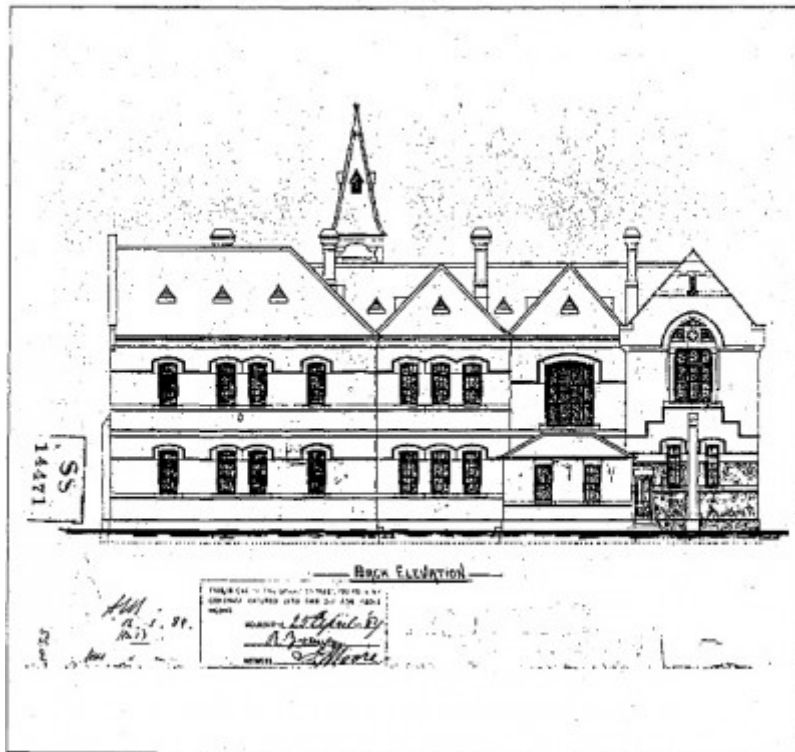
Yarraville Primary School



28247 Francis St Former
Yarraville Primary School



28247 Francis St Former
Yarraville Primary School



4 - 41 51-59 Francis Street, extract from contract drawing signed April 1889 (PWD collection)

28247 51 59 Francis Street 03

A successful integration of two eras of building which is considered among the most developed examples of the towered Venetian Gothic revival government schools and comparatively externally unaltered (general window replacement in the Edwardian period elsewhere). Historically, a major early public building in Yarraville and the vehicle for some prominent educators in the State system.

Heritage Study/Consultant Maribyrnong - City of Footscray Urban Conservation Study, Graeme Butler, 1989;
Other Names Listed as number 51-59 in the Footscray Urban Conservation Study,
Hermes Number 28247
Property Number

Physical Description 1

Lawrence Burchell has noted Yarraville among other bell-towered school structures which were set on an E-plan and draw on the Italian Gothic for their stylistic inspiration. These include English examples such as Ettington Park, Warwickshire (1859) and, in Victoria, Stawell (1879), Newtown (1877), Kyneton, Moreland (1890), Wangaratta (1877), Ballarat, Armadale (1884) and Wales Street, Northcote.[4] Each is a variation on the common theme, as determined by their date. The later (and often bigger) designs possessing more vertical emphasis, with taller towers and flanking gables.

Yarraville is at the end of this progression and consequently is among the best developed of the type and configuration. An early photograph (c1909) shows the school complete with timber picket fence. [5]

Ref:
4 Burchell, p.150f
5 FFFY

Integrity

External Integrity
New windows have been added sympathetically to front and rear elevations and some gable finials have gone. New wings added at rear and the picket fence replaced.

Physical Description 2

Streetscape
A large complex set among altered Victorian period houses on the west and early 20th century buildings on the east.

This place/object may be included in the Victorian Heritage Register pursuant to the Heritage Act 2017. Check the Victorian Heritage Database, selecting 'Heritage Victoria' as the place source.

For further details about Heritage Overlay places, contact the relevant local council or go to Planning Schemes Online <http://planningschemes.dpcd.vic.gov.au/>