

Victorian Heritage Database Report

Report generated 26/01/20



CHELSEA COURT HOUSE



CHELSEA COURT HOUSE SOHE 2008



CHELSEA COURT HOUSE SOHE 2008



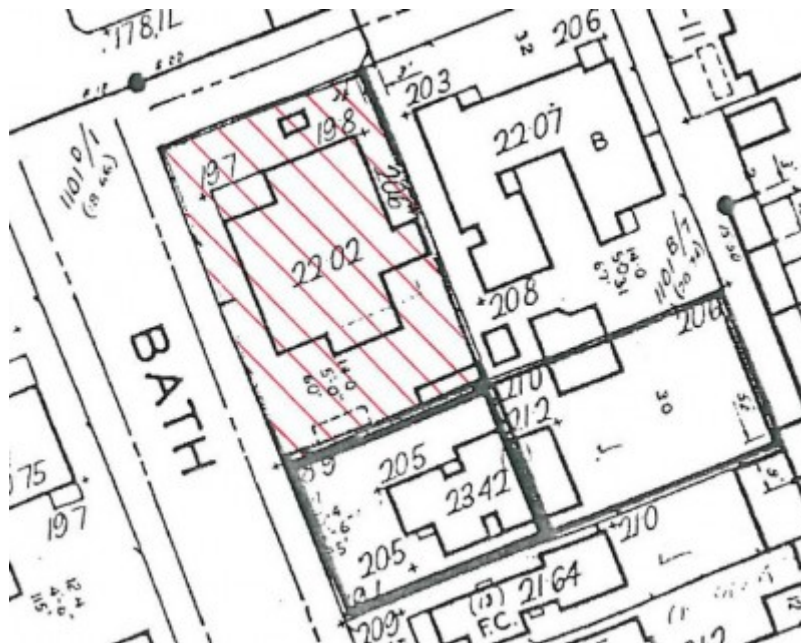
1 chelsea court house the strand
chelsea front view



chelsea court house the strand chelsea
detail of coat of arms



chelsea court house the strand chelsea
side view



H0804 H0804 plan

Location

6 THE STRAND CHELSEA, Kingston City

Municipality

KINGSTON CITY

Level of significance

Registered

Victorian Heritage Register (VHR) Number

H0804

Heritage Overlay Numbers

HO1

VHR Registration

July 11, 1990

Heritage Listing

Victorian Heritage Register

Statement of Significance

Last updated on - January 25, 2000

The Chelsea Court House has architectural and historic importance for the following reasons:

1. The Chelsea Court House is one of a group of five similar neo-classical court houses constructed in the late 1920s and early 1930s. As a group the designs of the court houses do not follow traditional typological models. Asymmetry derived from functional requirements is used as a design generator expressed strongly in the elevations and overall form of the building.
2. Of the group mentioned above, Chelsea is an outstanding example because of the scale and flair with which it was executed. It retains a high degree of integrity and many decorative features.
3. The group of which Chelsea is a representative example is also important because these buildings were constructed in suburban locations in a short time period. This intense burst of building in the late 1920s and early 1930s followed a break in court house construction since World War One. Prior to this, in 1911-1914, a group of country court houses with similar stylistic features had been constructed. Apparently, under the supervision of Edwin Evan Smith, the Public Works Department identified an urgent need for suburban court houses. The social conditions which necessitated these buildings require further investigation.
4. The Chelsea Court House was designed under the supervision of the prominent Public Works Department architect E Evan Smith. Smith is noted for the Herbarium, South Yarra and also won a Royal Victorian Institute of Architect's Street architecture medal in 1930 for the Emily Macpherson College of Domestic Economy.
5. The court house forms part of a public precinct and is an important identifiable community element in Chelsea.
6. The facade of the building fronting the Strand is a sophisticated neo-classical composition crowned by an imposing crest.

Construction dates 1928,
Architect/Designer Smith, Edwin Evan,
Heritage Act Categories Registered place,
Hermes Number 284
Property Number

Extent of Registration

AMENDMENT OF REGISTER OF HISTORIC BUILDINGS

Historic Building No. 804:

Chelsea Court House, The Strand, Chelsea.

(All the buildings and land known as Crown Allotment 5A, Parish of Lynhurst as shown hatched on the attached extent of designation.)

[*Victoria Government Gazette* No. G27 11 July 1990 p.2117]

This place/object may be included in the Victorian Heritage Register pursuant to the Heritage Act 2017. Check the Victorian Heritage Database, selecting 'Heritage Victoria' as the place data owner.

For further details about Heritage Overlay places, contact the relevant local council or go to Planning Schemes Online <http://planningschemes.dpcd.vic.gov.au/>