

# BARWON GRANGE



BARWON GRANGE SOHE 2008



BARWON GRANGE SOHE 2008



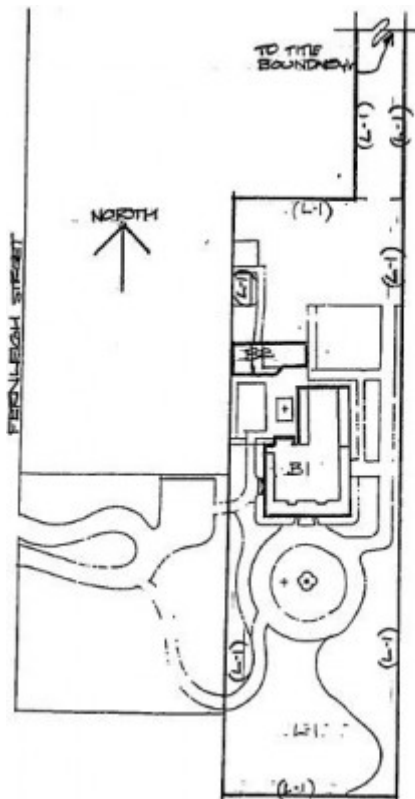
BARWON GRANGE SOHE 2008



BARWON GRANGE SOHE 2008



1 barwon grange fernleigh street  
newtown front view apr1997



h01102 plan h1102

---

## Location

25 FERNLEIGH STREET NEWTOWN, Greater Geelong City

## Municipality

GREATER GEELONG CITY

## Level of significance

Registered

## Victorian Heritage Register (VHR) Number

H1102

## Heritage Overlay Numbers

HO108

## VHR Registration

September 14, 1995

## Heritage Listing

Victorian Heritage Register

---

## Statement of Significance

Last updated on - May 5, 1999

Barwon Grange was developed by Jonathan Porter O'Brien, merchant, and his wife Ann who first constructed a timber house, then a brick house prior to 1856. No architect has been conclusively linked with the main house, although Snell and Kawerau, Backhouse and Reynolds, or John Gill are all possibilities. The prominent Geelong architects Davidson and Henderson designed the 1871 detached kitchen.

Barwon Grange is set back from the banks of the Barwon River and is now, except for the narrow river frontage, surrounded by industrial development. The house is currently owned by the National Trust and operates as a house museum.

Barwon Grange is of architectural and historic importance to the state of Victoria.

Barwon Grange is important for its associated with early Geelong merchants and businessmen including JP O'Brien and James Chandwick. It reflects the affluence of merchants and business interests in Geelong and its hinterland which was precipitated by the gold rushes of the 1850's and later consolidated in the 1870s. Barwon Grange demonstrates a successful middle class lifestyle of the mid to late nineteenth century. The uses, relative sizes and disposition of the rooms are typical and are now generally interpreted through redecoration and furnishing as a house museum. Barwon Grange is a distinctive example of the Gothic Revival style. It expresses the ideals of the Picturesque movement particularly through its use of architectural details including elaborate roof line, unusual balustraded verandah and through its riverside setting.

Construction dates 1856,  
Heritage Act Categories Registered place,  
Hermes Number 2867  
Property Number

---

## History

<span class="c1">Associated People: Davidson & Henderson;</span>

### Extent of Registration

#### AMENDMENT OF REGISTER OF HISTORIC BUILDINGS

Historic Building No. 1102:

Barwon Grange, Fernleigh Street, Newtown, City of Greater Geelong.

Extent:

1. All of the buildings known as Barwon Grange, comprising the house marked B-1 and the 1871 brick outbuilding marked B-2 on Plan 603246A, endorsed by the Chair, Historic Buildings Council and held by the Director, Historic Building Council.
2. All the land described in Certificate of Title Vol. 9005 Folio 066 and marked L-1 on Plan 603246A endorsed by the Chair, Historic Buildings Council and held by the Director, Historic Buildings Council.  
[*Victoria Government Gazette* No. G36 14 September 1995 pp.2536-2537]

*This place/object may be included in the Victorian Heritage Register pursuant to the Heritage Act 2017. Check the Victorian Heritage Database, selecting 'Heritage Victoria' as the place source.*

*For further details about Heritage Overlay places, contact the relevant local council or go to Planning Schemes Online <http://planningschemes.dpcd.vic.gov.au/>*