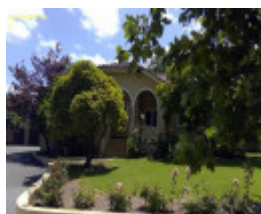

MORTLAKE



Mortlake



House, 45-47 Roughead St



House, 110-112 McCartin St



Former UV Knight's House,
26 Ogilvy St



Mortlake, 41 Jeffrey St

Location

41 JEFFREY STREET, LEONGATHA, SOUTH GIPPSLAND SHIRE

Municipality

SOUTH GIPPSLAND SHIRE

Level of significance

Rec for HO area contributory

Heritage Listing

South Gippsland Shire

Statement of Significance

Last updated on -

What is significant?

'Mortlake', designed and constructed in 1921 by F.W. Morris as his own residence, at 41 Jeffrey Street, Leongatha is significant.

How is it significant?

'Mortlake' at 41 Jeffrey Street, Leongatha is of local historic and aesthetic significance to the town of Leongatha.

Why is it significant?

Historically, it demonstrates the significant residential development that occurred in Leongatha during the interwar period. It is also of interest for its associations with locally important contractor, FW Morris. (AHC criteria - A.4 and D.2)

Aesthetically, it is a superior and locally rare example of an interwar attic bungalow that makes a notable contribution to the historic character of Jeffrey Street. It is also of interest as a fine example of the work of local contractor, FW Morris. (AHC criterion - E.1)

Heritage Study/Consultant	South Gippsland - South Gippsland Heritage Study, David Helms with Trevor Westmore, 2004;
Construction dates	1921, 1921, 1920, 1930, 1936,
Architect/Designer	Morris, FW, FW Morris, , JL Rowden,
Other Names	Morris House, Extra, group, Mortlake (41 Jeffrey St), Former UV Knight Residence (26 Ogilvy St),
Hermes Number	30779
Property Number	

Physical Description 1

"Mortlake" at 41 Jeffrey Street, Leongatha is a substantial attic style interwar bungalow attic residence, constructed in red brick with a terra cotta tiled roof. Its form is basically of a large longitudinal gable containing the attic, with a smaller front projecting gable and a transverse gable projecting to the side forming the verandah and extending across the front to the projecting gable. Notable elements include:

- The weatherboard gable end infills.
- The paired double hung windows.
- The tapered roughcast chimneys.
- The roughcast brick piers supporting the verandah and the swagged roughcast balustrades.
- The brick outbuilding with a hipped corrugated iron roof in the back yard.

This place/object may be included in the Victorian Heritage Register pursuant to the Heritage Act 2017. Check the Victorian Heritage Database, selecting 'Heritage Victoria' as the place source.

For further details about Heritage Overlay places, contact the relevant local council or go to Planning Schemes Online <http://planningschemes.dpcd.vic.gov.au/>