

# KOW PLAINS HOMESTEAD



KOW PLAINS HOMESTEAD SOHE 2008



KOW PLAINS HOMESTEAD SOHE 2008



KOW PLAINS HOMESTEAD SOHE 2008



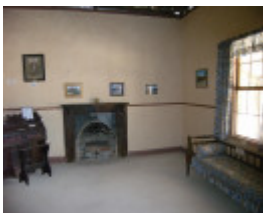
KOW PLAINS HOMESTEAD SOHE 2008



KOW PLAINS HOMESTEAD SOHE 2008



KOW PLAINS HOMESTEAD SOHE 2008



KOW PLAINS HOMESTEAD SOHE 2008



KOW PLAINS HOMESTEAD SOHE 2008



h00688 kow plains homestead restoration 2002



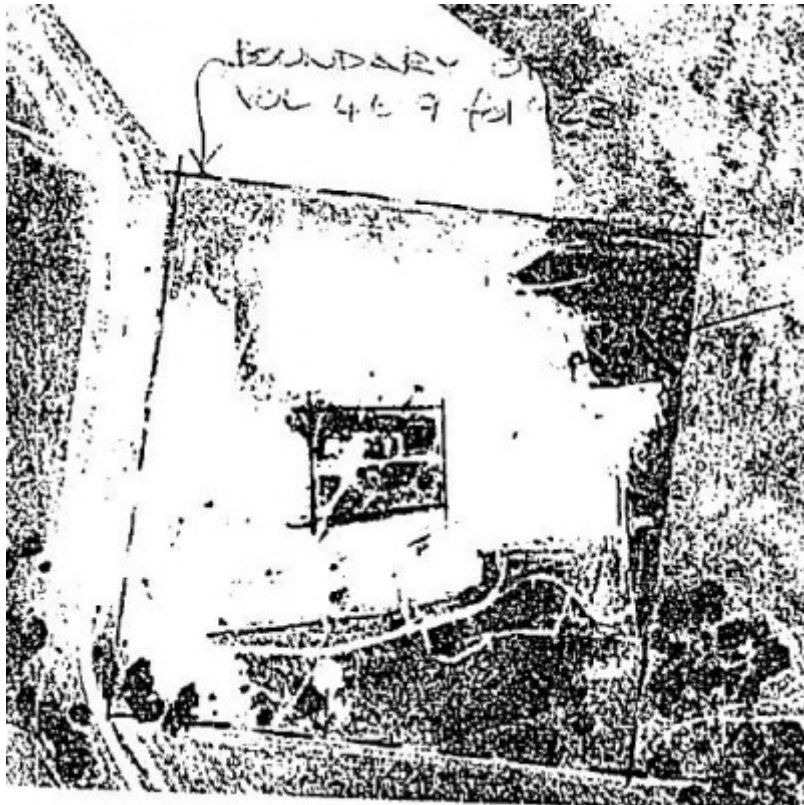
cow plains homestead cowangle side view of homestead with chimney



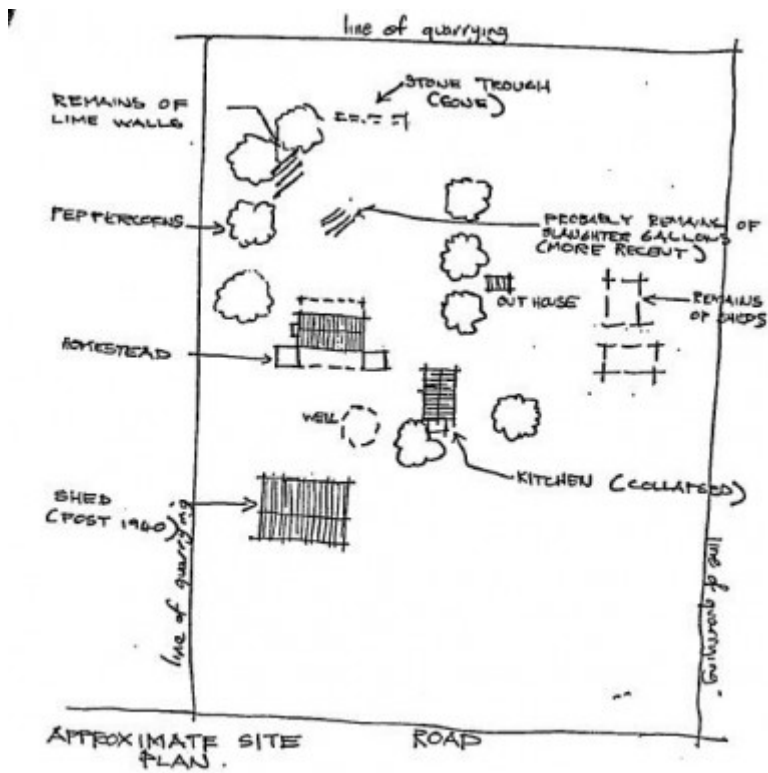
h00688 kow plains homestead cowangle cookhouse she project 2003



h00688 kow plains homestead cowangle privy she project 2003



H0688 H688 extent a



H0688 H688 extent b

**Location**

99 COWANGIE SOUTH ROAD COWANGIE, MILDURA RURAL CITY

**Municipality**

MILDURA RURAL CITY

**Level of significance**

Registered

**Victorian Heritage Register (VHR) Number**

H0688

**Heritage Overlay Numbers**

HO182

**VHR Registration**

June 15, 1988

**Heritage Listing**

Victorian Heritage Register

---

**Statement of Significance**

Last updated on - June 28, 1999

Cow Plains Homestead Complex is unique for its associations with the earliest preagricultural history of the Mallee when large pastoral runs were the most characteristic form of settlement in this harsh region.

Cow Plains has historical significance as a rare surviving example from this era and that remained as a pastoral run over an unusually long period. Although many properties were subdivided for agricultural purposes following the passage of the Mallee Pastoral Leases Act of 1883, Cow Plains was not subdivided until 1909.

The complex is architecturally significant to the state as an example of the use of local materials and of drop log construction. The homestead, the out-house and the ruins of the kitchen are of drop-log construction comprising a number of upright poles placed approximately 1.2 metres apart to which saplings were attached to form slots on opposite sides of the pole. Unseen pine logs were then fitted into the slots.

[Source: Report to the Minister]

Construction dates	1909,
Heritage Act Categories	Registered place,
Other Names	COW PLAINS,

Hermes Number 320

Property Number

---

## **Extent of Registration**

### AMENDMENT OF REGISTER OF HISTORIC BUILDINGS

Historic Building No. 688.

Cow (Kow) Plains Homestead Cowangie

To the extent of the whole of the whole of the Cow Plains Homestead and its outbuildings and the land in Certificate of Title Volume 4619 Folio 923 to the extent defined in the plan held by the Ministry for Planning and Environment..

[*Victoria Government Gazette* No. G22 15 June 1988 p. 1767]

*This place/object may be included in the Victorian Heritage Register pursuant to the Heritage Act 2017. Check the Victorian Heritage Database, selecting 'Heritage Victoria' as the place source.*

*For further details about Heritage Overlay places, contact the relevant local council or go to Planning Schemes Online <http://planningschemes.dpcd.vic.gov.au/>*