

FORMER CHARLIE NAPIER HOTEL



FORMER CHARLIE NAPIER HOTEL SOHE 2008



FORMER CHARLIE NAPIER HOTEL SOHE 2008



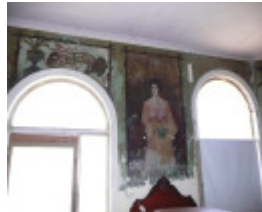
FORMER CHARLIE NAPIER HOTEL SOHE 2008



FORMER CHARLIE NAPIER HOTEL SOHE 2008



FORMER CHARLIE NAPIER HOTEL SOHE 2008



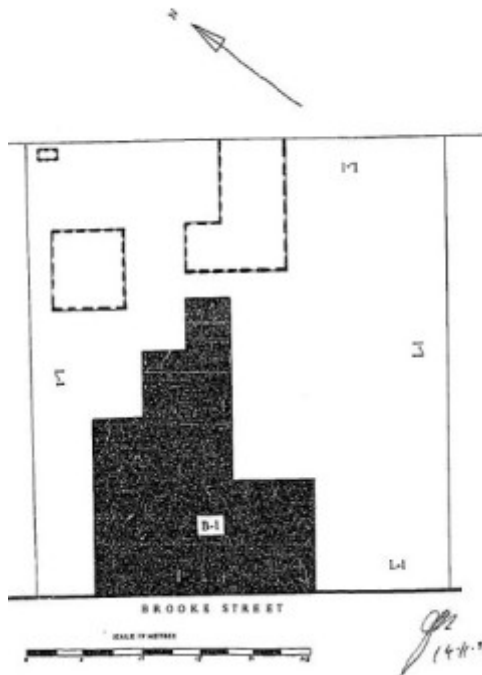
FORMER CHARLIE NAPIER HOTEL SOHE 2008



FORMER CHARLIE NAPIER HOTEL SOHE 2008



1 former charlie napier hotel brooke street inglewood front view



H1143 plan

Location

29 BROOKE STREET INGLEWOOD, LODDON SHIRE

Municipality

LODDON SHIRE

Level of significance

Registered

Victorian Heritage Register (VHR) Number

H1143

Heritage Overlay Numbers

HO73

VHR Registration

December 14, 1995

Heritage Listing

Statement of Significance

Last updated on - May 6, 1999

The former Charlie Napier Hotel was built in 1874, to the design of William Vahland, replacing the original timber hotel building which had been constructed on the site in the 1860s. The hotel is a two storey parapeted building with three arched openings; the hotel's balcony and iron lace work were removed post 1968. The bar room contains 12 painted murals depicting commercial logos and local scenes against a decorative painted background; the murals are signed by the artist "Len Moodie" and dated 1906.

The former Charlie Napier Hotel is significant for historical and architectural reasons.

The former Charlie Napier Hotel is historically significant as an example of a substantial 19th century hotel built in a country town during the gold rush era. The excitement generated by the gold fields caused a surge in population and the ensuing need for new and larger-scale buildings. The rare painted folk-art murals give a unique and important interpretation of colonial life through illustrated stories of life on the road, nostalgic reminiscences of 'home' and general attitudes of the time. The former Charlie Napier Hotel and its murals are historically important for their ability to express an important period in Victoria's history, a time of great change, optimism and nostalgia.

The former Charlie Napier hotel is architecturally significant as a representative example of the work of William Vahland, a prominent Bendigo architect of the time.

Permit Exemptions

General Exemptions:

General exemptions apply to all places and objects included in the Victorian Heritage Register (VHR). General exemptions have been designed to allow everyday activities, maintenance and changes to your property, which don't harm its cultural heritage significance, to proceed without the need to obtain approvals under the Heritage Act 2017.

Places of worship: In some circumstances, you can alter a place of worship to accommodate religious practices without a permit, but you must [notify](#) the Executive Director of Heritage Victoria before you start the works or activities at least 20 business days before the works or activities are to commence.

Subdivision/consolidation: Permit exemptions exist for some subdivisions and consolidations. If the subdivision or consolidation is in accordance with a planning permit granted under Part 4 of the *Planning and Environment Act 1987* and the application for the planning permit was referred to the Executive Director of Heritage Victoria as a determining referral authority, a permit is not required.

Specific exemptions may also apply to your registered place or object. If applicable, these are listed below. Specific exemptions are tailored to the conservation and management needs of an individual registered place or object and set out works and activities that are exempt from the requirements of a permit. Specific exemptions prevail if they conflict with general exemptions.

Find out more about heritage permit exemptions [here](#).

Construction dates 1874,
Architect/Designer Vahland, William Charles,
Heritage Act Categories Registered place,
Hermes Number 3310
Property Number

History

Associated People:

Extent of Registration

AMENDMENT OF REGISTER OF HISTORIC BUILDINGS

Historic Building No. 1143.

Former Charlie Napier Hotel, 33 Brooke Street, Inglewood, Shire of Loddon.

Extent:

To the extent of:

1. All of the building known as the former Charlie Napier Hotel, marked B-1 on plan 604322 endorsed by the Chair, Historic Buildings Council and held by the Director, Historic Buildings Council.
 2. All of the land known as Certificate of Title Volume 2704 Folio 786 marked L-1 on Plan 604322 endorsed by the Chair, Historic Buildings Council and held by the Director, Historic Buildings Council.
- [Victoria Government Gazette No. G49 14 December 1995 p.3549]

This place/object may be included in the Victorian Heritage Register pursuant to the Heritage Act 2017. Check the Victorian Heritage Database, selecting 'Heritage Victoria' as the place source.

For further details about Heritage Overlay places, contact the relevant local council or go to Planning Schemes Online <http://planningschemes.dpcd.vic.gov.au/>