

FORMER BENDIGO HOTEL



H0863 FORMER BENDIGO HOTEL
LHA 2015 1.JPG



FORMER BENDIGO HOTEL SOHE 2008



1 former bendigo hotel dunolly front view



former bendigo hotel dunolly front
entrance



H0863 FORMER BENDIGO HOTEL
LHA 2015 2.JPG



H0863 FORMER BENDIGO HOTEL
LHA 2015 3.JPG



H0863 FORMER BENDIGO HOTEL
LHA 2015 4.JPG



H0863 FORMER BENDIGO HOTEL
LHA 2015 5.JPG



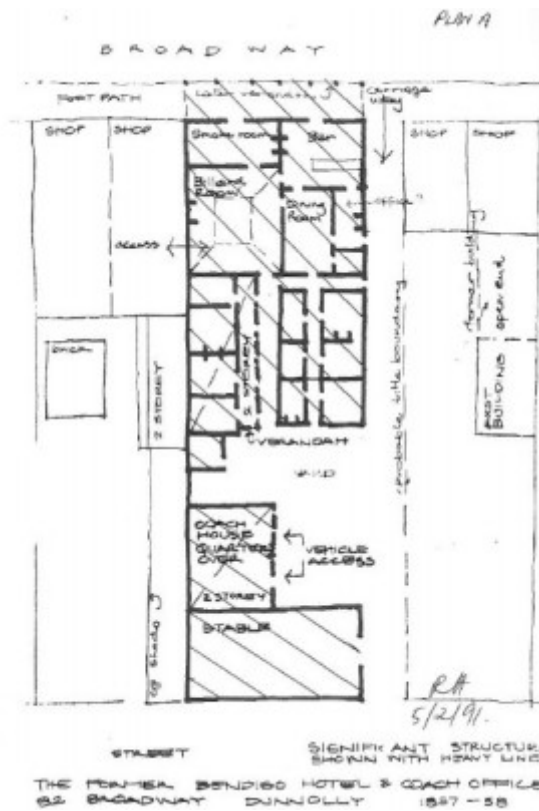
H0863 FORMER BENDIGO HOTEL
LHA 2015 6.JPG



H0863 FORMER BENDIGO HOTEL
LHA 2015 7.JPG



H0863 FORMER BENDIGO HOTEL
LHA 2015 8.JPG



H0863 H0863 plan

Location

82 BROADWAY DUNOLLY, Central Goldfields Shire

Municipality

CENTRAL GOLDFIELDS SHIRE

Level of significance

Registered

Victorian Heritage Register (VHR) Number

H0863

Heritage Overlay Numbers

HO2

VHR Registration

April 17, 1991

Heritage Listing

Statement of Significance

Last updated on - July 2, 1999

ASOURCE: REPORT TO THE MINISTER

THE FORMER BENDIGO HOTEL WAS CONSTRUCTED IN 1857-1858 BY ROBERT WITTACKER FOR GEORGE SIMPSON. IT SERVED AS A HOTEL AND COBB AND CO. COACH HOUSE DURING THE EARLY YEARS OF THE GOLD RUSH, AND CONTINUED AS A HOTEL UNTIL 1922.

1. THE FORMER BENDIGO HOTEL IS IMPORTANT BECAUSE OF ITS HISTORICAL ASSOCIATIONS WITH THE GOLD RUSH AND WITH EARLY DAYS OF DUNOLLY TOWNSHIPS EXISTENCE.
2. ARCHITECTURALLY, THE PARAPETED ROOF TREATMENT OF THE FORMER BENDIGO HOTEL IS UNUSUAL.
3. THE FORMER BENDIGO HOTEL IS ALSO IMPORTANT BECAUSE OF THE ROLE IT PLAYED IN BEING THE EARLIEST MEETING PLACE FOR WHAT WAS ONCE A HIGHLY POPULATED AREA.
4. THE EXTRAORDINARY INTEGRITY OF ITS FABRIC AND PAINTED DECORATION MAKE THE FORMER BENDIGO HOTEL AN OUTSTANDING REPRESENTATIVE EXAMPLE OF THIS TYPE OF BUILDING.
5. THE BUILDING RETAINS ITS ORIGINAL INTERIORS.

Construction dates 1857,
Heritage Act Categories Registered place,
Hermes Number 346
Property Number

Extent of Registration

AMENDMENT OF REGISTER OF HISTORIC BUILDINGS

Historic Building No. 863, the former Bendigo Hotel, 82 Broadway, Dunolly.

(All buildings and land known as Crown Allotment 13, Section 14 in the Township of Dunolly, Parish of Dunolly, as shown hatched on Plan A endorsed by the Chairperson, Historic Buildings Council and held by the Director, Historic Buildings Council.)

[*Victoria Government Gazette* No. G14 17 April 1991 p.1008]

This place/object may be included in the Victorian Heritage Register pursuant to the Heritage Act 2017. Check the Victorian Heritage Database, selecting 'Heritage Victoria' as the place source.

For further details about Heritage Overlay places, contact the relevant local council or go to Planning Schemes Online <http://planningschemes.dpcd.vic.gov.au/>