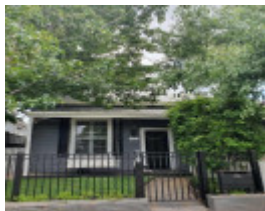

Residence, 38-38A Edsall Street, Malvern



38-38A Edsall Street, Malvern 38-38A Edsall Street, Malvern

Location

38-38A Edsall Street Malvern, Stonnington City

Municipality

STONNINGTON CITY

Level of significance

Incl in HO area contributory

Heritage Overlay Numbers

HO374

Heritage Listing

Stonnington City

Heritage
Study/Consultant

Stonnington - City of Stonnington Heritage Overlay Gap Study - Heritage Overlay
Precincts Final Report, Bryce Raworth P/L, 2009;

Hermes Number

45520

Property Number

Physical Description 1

Single-storey Victorian timber villa (converted into two dwellings).

This place/object may be included in the Victorian Heritage Register pursuant to the Heritage Act 2017. Check the Victorian Heritage Database, selecting 'Heritage Victoria' as the place source.

For further details about Heritage Overlay places, contact the relevant local council or go to Planning Schemes Online <http://planningschemes.dpcd.vic.gov.au/>