

# HAMILTON GAS HOLDER



HAMILTON GAS HOLDER  
SOHE 2008



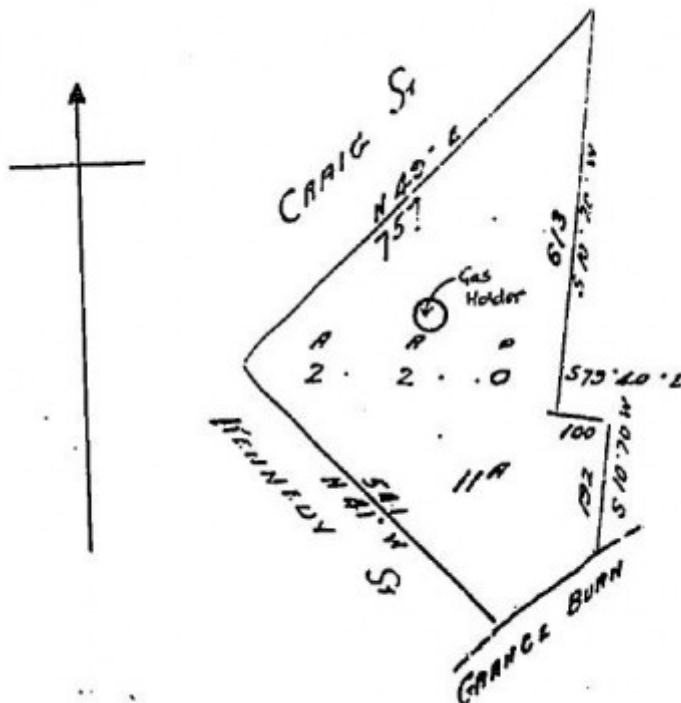
HAMILTON GAS HOLDER  
SOHE 2008



HAMILTON GAS HOLDER  
SOHE 2008



1 hamilton gas holder craig  
street hamilton gas holder



h01086 plan h1086

---

## Location

2-16 CRAIG STREET HAMILTON, SOUTHERN GRAMPIANS SHIRE

## Municipality

SOUTHERN GRAMPIANS SHIRE

## Level of significance

Registered

## Victorian Heritage Register (VHR) Number

H1086

## Heritage Overlay Numbers

HO259

## VHR Registration

July 13, 1995

## Heritage Listing

Victorian Heritage Register

---

## Statement of Significance

Last updated on - April 22, 1997

The Gas Holder at Hamilton is a riveted steel structure built in 1877 as part of the Hamilton Gas Works. The gas works complex shows the evolution of the original works from 1877 to the present day; gas derived from coal processed on site to shipped in Tempered Liquid Petroleum Gas (TLPG). Most of the nineteenth century buildings have been demolished with the exception of the east portions of some walls of the original manager's office and store after the Gas & Fuel Corporation acquired control of the works.

The gas holder is a rare and essentially intact example of a once common industrial structure and is the oldest known example of its type in Victoria.

The gas holder represents a process and function of the gas industry from gas derived from coal processed on site to shipped in TLPG gas.

The Gas Holder at Hamilton demonstrates an association with two important figures in the history of the Victorian gas industry, being the only known surviving example of many works of Alexander Kennedy Smith, gas engineer, and Thomas Bowman, construction supervisor and works manager.

## Permit Exemptions

## General Exemptions:

General exemptions apply to all places and objects included in the Victorian Heritage Register (VHR). General exemptions have been designed to allow everyday activities, maintenance and changes to your property, which don't harm its cultural heritage significance, to proceed without the need to obtain approvals under the Heritage Act 2017.

**Places of worship:** In some circumstances, you can alter a place of worship to accommodate religious practices without a permit, but you must **notify** the Executive Director of Heritage Victoria before you start the works or activities at least 20 business days before the works or activities are to commence.

**Subdivision/consolidation:** Permit exemptions exist for some subdivisions and consolidations. If the subdivision or consolidation is in accordance with a planning permit granted under Part 4 of the *Planning and Environment Act 1987* and the application for the planning permit was referred to the Executive Director of Heritage Victoria as a determining referral authority, a permit is not required.

Specific exemptions may also apply to your registered place or object. If applicable, these are listed below. Specific exemptions are tailored to the conservation and management needs of an individual registered place or object and set out works and activities that are exempt from the requirements of a permit. Specific exemptions prevail if they conflict with general exemptions.

Find out more about heritage permit exemptions [here](#).

Construction dates	1870,
Heritage Act Categories	Registered place,
Hermes Number	4658
Property Number	

---

## History

Associated People: Owner GAS AND FUEL CORPORATION;

## Extent of Registration

### AMENDMENT OF REGISTER OF HISTORIC BUILDINGS

Historic Building No. 1086:

Hamilton Gas Holder, corner Craig and Kennedy Streets, Hamilton, Southern Grampians Shire Council.

Extent:

1. All of the Gas Holder structure and an area of land two metres from the edge of the external structure of the wall around the holder marked on Plan 605725 endorsed by the Chair, Historic Buildings Council and held by the Director, Historic Buildings Council.

[*Victoria Government Gazette* No. G27 13 July 1995 p.1806]

*This place/object may be included in the Victorian Heritage Register pursuant to the Heritage Act 2017. Check the Victorian Heritage Database, selecting 'Heritage Victoria' as the place source.*

*For further details about Heritage Overlay places, contact the relevant local council or go to Planning Schemes Online <http://planningschemes.dpcd.vic.gov.au/>*