

MACEDON CROSS



MACEDON CROSS SOHE
2008



MACEDON CROSS SOHE
2008



MACEDON CROSS SOHE
2008



MACEDON CROSS SOHE
2008



h01027 1 macedon cross
cameron drive mt macedon
approach she project 2003



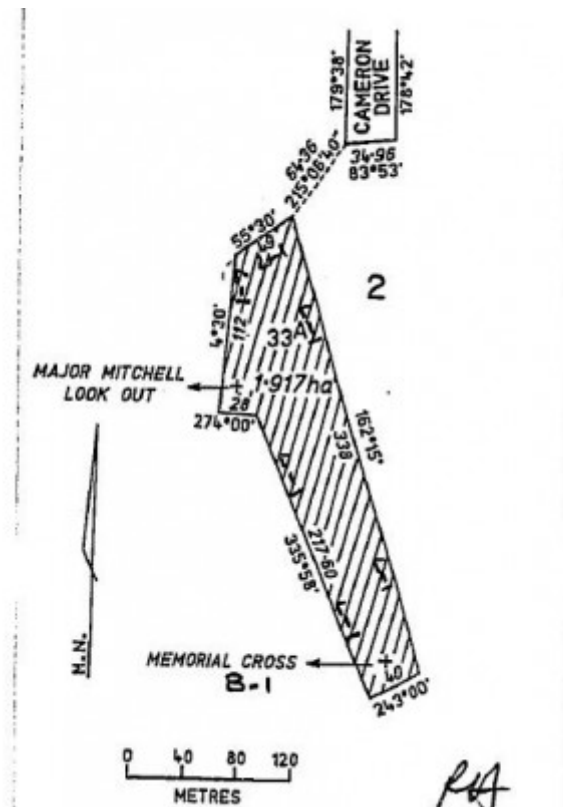
h01027 macedon cross
cameron drive mt macedon
cross she project 2003



h01027 macedon cross
cameron drive mt macedon
plaque she project 2003



h01027 cameron memorial
cross cameron drive mount
macedon cross base



h01027 plan h1027

Location

405 CAMERON DRIVE MT MACEDON, MACEDON RANGES SHIRE

Municipality

MACEDON RANGES SHIRE

Level of significance

Registered

Victorian Heritage Register (VHR) Number

H1027

Heritage Overlay Numbers

HO37

VHR Registration

September 1, 1994

Heritage Listing

Statement of Significance

Last updated on - May 15, 2023

What is significant?

The Cameron Memorial Cross, Mount Macedon, donated by William Cameron, was dedicated in 1935 to the Australian service people who have been killed in the First World War. Constructed of Wunderlich terra cotta tiles on a steel base, it has withstood lightning strikes and bushfires.

How is it significant?

The Cameron Memorial Cross is significant to the State of Victoria for historic, social and aesthetic reasons.

Why is it significant?

The Cameron Memorial Cross is important for spiritual, symbolic, cultural, and social reasons as a memorial for those who lost their lives in the First World War, and became for many a symbol of courage and survival after the 1983 Ash Wednesday bushfires. The custom or function of commemorating the war dead is observed at a dawn service held at the base of the cross annually. The size, simplicity of the design of the Cameron Memorial Cross, along with its siting on Mount Macedon, is a rare example of a memorial commemorating those who died in the First World War. It is able to demonstrate an association with important events in Victoria's history, the First World War, and it demonstrates the use of particular material in the form of Wunderlich tiles which, because of their reflective nature, are able to enhance the simplicity and symbolism of the cross, and enable it to be viewed from considerable distances.

Permit Exemptions

General Exemptions:

General exemptions apply to all places and objects included in the Victorian Heritage Register (VHR). General exemptions have been designed to allow everyday activities, maintenance and changes to your property, which don't harm its cultural heritage significance, to proceed without the need to obtain approvals under the Heritage Act 2017.

Places of worship: In some circumstances, you can alter a place of worship to accommodate religious practices without a permit, but you must **notify** the Executive Director of Heritage Victoria before you start the works or activities at least 20 business days before the works or activities are to commence.

Subdivision/consolidation: Permit exemptions exist for some subdivisions and consolidations. If the subdivision or consolidation is in accordance with a planning permit granted under Part 4 of the *Planning and Environment Act 1987* and the application for the planning permit was referred to the Executive Director of Heritage Victoria as a determining referral authority, a permit is not required.

Specific exemptions may also apply to your registered place or object. If applicable, these are listed below. Specific exemptions are tailored to the conservation and management needs of an individual registered place or object and set out works and activities that are exempt from the requirements of a permit. Specific exemptions prevail if they conflict with general exemptions.

Find out more about heritage permit exemptions [here](#).

Construction dates 1935,

Heritage Act Categories	Registered place,
Other Names	MT MACEDON CROSS, CAMERON MEMORIAL CROSS,
Hermes Number	4665
Property Number	

History

Associated People: Owner WILLIAM CAMERON;

Extent of Registration

AMENDMENT OF REGISTER OF HISTORIC BUILDINGS

Under section 14 of the **Historic Buildings Act** 1981 the Governor in Council amends the Register by adding Historic Building No. 1027.

Cameron Memorial Cross
Cameron Drive, Mount Macedon.

(To the extent of:

1. All of the structures and works known as the Cameron Memorial Cross, including the cross, base, surrounds, pathways and retaining walls marked B-1 on Plan 605749, signed by the Chairperson, Historic Buildings Council, and held by the Director, Historic Buildings Council.
2. All of the land marked L-1 on Plan 605749, signed by the Chairperson Historic Buildings Council, and held by the Director, Historic Buildings Council, being all of the land contained in Crown Allotment 33A in the Parish of Macedon, County of Bourke.)

Dated 30 August 1994

Responsible Minister:
ROBERT MACLELLAN
Minister for Planning

KATHY WILSON
Acting Clerk of the Executive Council

[*Victorian Government Gazette* G35 1 September 1994 2373]

This place/object may be included in the Victorian Heritage Register pursuant to the Heritage Act 2017. Check the Victorian Heritage Database, selecting 'Heritage Victoria' as the place source.

For further details about Heritage Overlay places, contact the relevant local council or go to Planning Schemes Online <http://planningschemes.dpcd.vic.gov.au/>