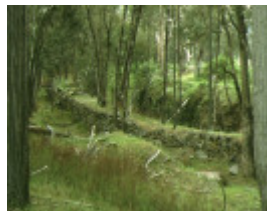
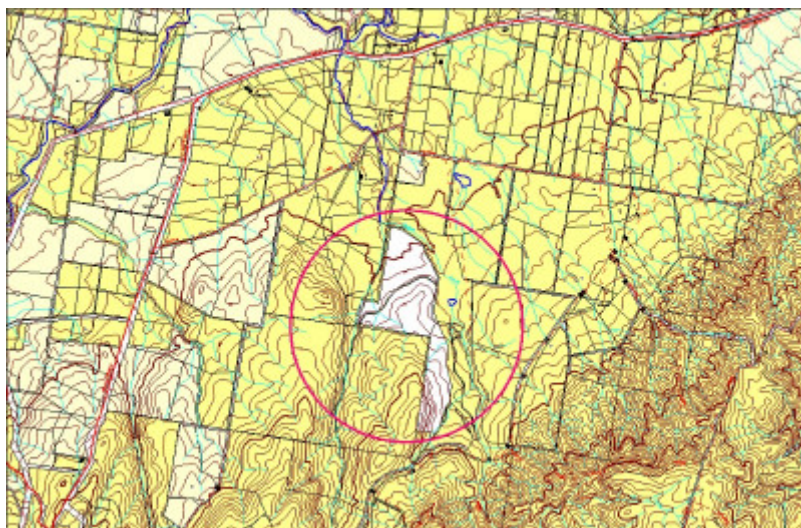


# MAGPIE CREEK GOLD MINING DIVERSION SLUICE



1 magpie creek gold mining  
diversion sluice magpie  
historic reserve beechworth  
slhy



locality plan



magpie creek historic reserve.jpg

---

### **Location**

KIBELL LANE WOORAGEE, INDIGO SHIRE

### **Municipality**

INDIGO SHIRE

### **Level of significance**

Registered

### **Victorian Heritage Register (VHR) Number**

H1253

### **Heritage Overlay Numbers**

HO68

### **VHR Registration**

December 19, 1996

### **Heritage Listing**

## Statement of Significance

Last updated on - January 10, 1997

What is significant?

The Magpie Creek Gold Mining Diversion Sluice consists of a 200 metre long stone embankment which was probably built in the mid 1860s when the site was extensively reworked by Chinese miners. The embankment was used to divert the waters of Magpie Creek away from its natural bed which was then mined for its alluvial gold.

How is it significant?

The Magpie Creek Gold Mining Diversion Sluice is of historical, archaeological and scientific importance to the State of Victoria.

Why is it significant?

The Magpie Creek Gold Mining Diversion Sluice is historically and scientifically important as a characteristic and well preserved example of an early form of gold mining. Gold mining sites are of crucial importance for the pivotal role they have played since 1851 in the development of Victoria. Water diversion and sluicing are important key ingredients in an understanding of gold mining technology as it was employed in mountainous country where water was plentiful and perennial.

The Magpie Creek Gold Mining Diversion Sluice is archaeologically important for its potential to yield artefacts and evidence which will be able to provide significant information about the cultural history of gold mining and the gold seekers themselves.

## Permit Exemptions

### General Exemptions:

General exemptions apply to all places and objects included in the Victorian Heritage Register (VHR). General exemptions have been designed to allow everyday activities, maintenance and changes to your property, which don't harm its cultural heritage significance, to proceed without the need to obtain approvals under the Heritage Act 2017.

**Places of worship:** In some circumstances, you can alter a place of worship to accommodate religious practices without a permit, but you must **notify** the Executive Director of Heritage Victoria before you start the works or activities at least 20 business days before the works or activities are to commence.

**Subdivision/consolidation:** Permit exemptions exist for some subdivisions and consolidations. If the subdivision or consolidation is in accordance with a planning permit granted under Part 4 of the *Planning and Environment Act 1987* and the application for the planning permit was referred to the Executive Director of Heritage Victoria as a determining referral authority, a permit is not required.

Specific exemptions may also apply to your registered place or object. If applicable, these are listed below. Specific exemptions are tailored to the conservation and management needs of an individual registered place or object and set out works and activities that are exempt from the requirements of a permit. Specific exemptions prevail if they conflict with general exemptions.

Find out more about heritage permit exemptions [here](#).

### **Specific Exemptions:**

General Conditions:

1. All exempted alterations are to be planned and carried out in a manner which prevents damage to the fabric of the registered place or object.
2. Should it become apparent during further inspection or the carrying out of alterations that original or previously hidden or inaccessible details of the place or object are revealed which relate to the significance of the place or object, then the exemption covering such alteration shall cease and the Executive Director shall be notified as soon as possible.
3. If there is a conservation policy and plan approved by the Executive Director, all works shall be in accordance with it.
4. Nothing in this declaration prevents the Executive Director from amending or rescinding all or any of the permit exemptions.
5. Nothing in this declaration exempts owners or their agents from the responsibility to seek relevant planning or building permits from the responsible authority where applicable.

No permits are required for the following classes of works provided they are carried out in accordance with the provisions of the Conservation Plan For Historic Mining Sites prepared by David Bannear in 1996.

- \* Mineral Exploration
- \* Fire suppression duties
- \* Timber production
- \* Weed and vermin control
- \* Public safety
- \* Rehabilitation

Construction dates            1860,  
Heritage Act Categories    Registered place, Registered archaeological place,  
Hermes Number                4981  
Property Number

---

### **Extent of Registration**

#### NOTICE OF REGISTRATION

As Executive Director for the purpose of the Heritage Act, I give notice under Section 46 that the Victorian Heritage Register is amended by including the Heritage Register Number 1253 in the category described as a Heritage and Archaeological Place:

Magpie Creek Gold Mining Diversion Sluice, Magpie Historic Reserve, (6.5 kms north east of Beechworth), Indigo Shire Council.

#### EXTENT:

1. All of the land known as the Magpie Historic Reserve including the 200 metre long stone diversion sluice and remains of alluvial workings in the vicinity of a point with Australian Map Grid co-ordinates E755 N818 on 1:100,000 map sheet number 8225 Albury.

Dated 7 November 1996

RAY TONKIN

Executive Director

[Victoria Government Gazette No. G50 19 December 1996 pp.3291-3292]

*[NOTE: Magpie Historic Reserve is Crown Allotment 6B, Section A, Parish of Woorragee]*

*This place/object may be included in the Victorian Heritage Register pursuant to the Heritage Act 2017. Check the Victorian Heritage Database, selecting 'Heritage Victoria' as the place source.*

*For further details about Heritage Overlay places, contact the relevant local council or go to Planning Schemes Online <http://planningschemes.dpcd.vic.gov.au/>*