

Victorian Heritage Database Report

Report generated 23/02/20



FYANSFORD HOTEL



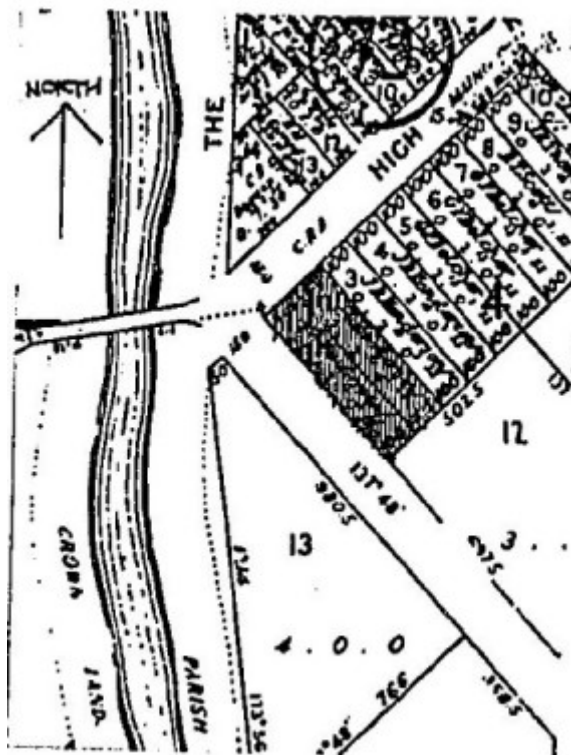
FYANSFORD HOTEL SOHE 2008



1 fyansford hotel fyansford front corner view apr 1997



fyansford hotel fyansford rear view



H0744 fyansford hotel plan

Location

67 HYLAND STREET FYANSFORD, GREATER GEELONG CITY

Municipality

GREATER GEELONG CITY

Level of significance

Registered

Victorian Heritage Register (VHR) Number

H0744

Heritage Overlay Numbers

HO87

VHR Registration

August 23, 1989

Heritage Listing

Victorian Heritage Register

Statement of Significance

Last updated on - June 28, 1999

The Fyansford Hotel, near the junction of the Barwon and Moorabool Rivers, marks one of the oldest river crossing places in Western Victoria. The hotel has important landmark associations with this historic district.

This two storey brick structure, a transitional colonial Georgian style hotel, was erected in 1854 for publican CB Dawson. The architect is unrecorded. The distinctive symmetrical fenestration and angled corner entrance, now enclosed, were characteristic mid-19th century features of public house architecture.

[Source: Report to the Minister]

Construction dates	1854,
Heritage Act Categories	Registered place,
Hermes Number	514
Property Number	

Extent of Registration

AMENDMENT OF REGISTER OF HISTORIC BUILDINGS

Historic Building No. 744, Fyansford Hotel, 67 Hyland Road, Fyansford, to the extent of all of the buildings, with the exception of the recent bottle-shop addition (1988), and all the land in Allotments 1 and 2, Section 4, Town of

Fyansford, Parish of Moorpanyal, County of Grant as listed in Memorial No. 510 Book 486, as shown hatched in the plan.

[Victoria Government Gazette No. G33 23 August 1989 p.2165]

This place/object may be included in the Victorian Heritage Register pursuant to the Heritage Act 2017. Check the Victorian Heritage Database, selecting 'Heritage Victoria' as the place data owner.

For further details about Heritage Overlay places, contact the relevant local council or go to Planning Schemes Online <http://planningschemes.dpcd.vic.gov.au/>