

CALDER WOODBURN MEMORIAL AVENUE



CALDER WOODBURN
MEMORIAL AVENUE SOHE
2008



H01975 1 calder woodburn
memorial avenue jh mar98



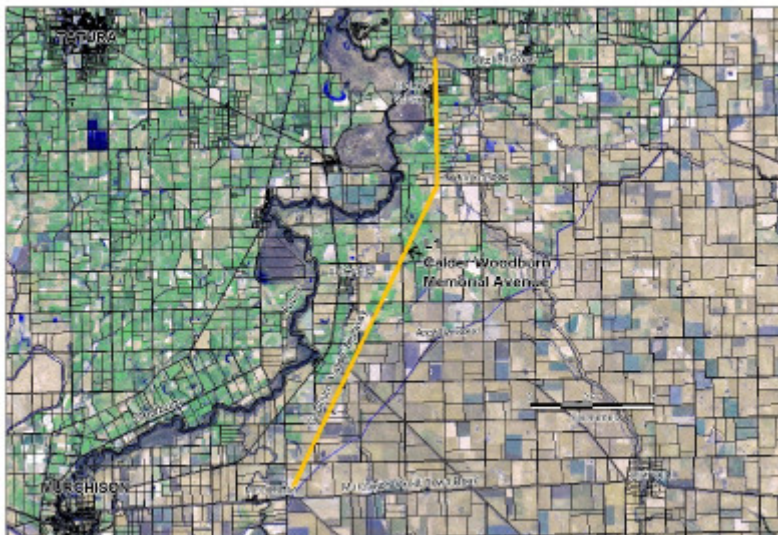
H01975 calder woodburn
memorial avenue2 jh mar98



H01975 calder woodburn
memorial avenue3 jh mar98



H01975 calder woodburn
memorial avenue4 jh mar98



H01975 calder woodburn plan3

Location

GOULBURN VALLEY HIGHWAY ARCADIA AND KIALLA WEST AND KIALLA AND ARCADIA SOUTH,
GREATER SHEPPARTON CITY, STRATHBOGIE SHIRE

Municipality

GREATER SHEPPARTON CITY

STRATHBOGIE SHIRE

Level of significance

Registered

Victorian Heritage Register (VHR) Number

H1975

Heritage Overlay Numbers

HO22

VHR Registration

December 6, 2001

Heritage Listing

Victorian Heritage Register

Statement of Significance

Last updated on - October 11, 2001

What is significant?

The Calder Woodburn Memorial Avenue was planted between 1945 and 1949 by Mr JLF (Fen) Woodburn as a living memorial to his son Calder who lost his life while serving abroad with the Royal Australian Air Force. Calder Woodburn, a graduate of Dookie Agricultural College, enlisted 1940. He failed to return from a mine laying mission along the French coastline in April 1942. In late 1943 Fen Woodburn offered to plant two rows of trees for a distance of 9.5kms along the Goulburn Valley Highway as a memorial to his son. Starting in 1945, by August 1947 Fen Woodburn had planted all the 1406 trees to complete his original vision. In 1948 he extended by a further 638 trees. In its final form the avenue was extended, in four rows, as far as the Murchison-Violet Town Road in 1949 making a total of 2,457 trees. Woodburn wanted the Avenue to be a memorial to all local servicemen who did not return from the Second World War. Memorial name plates were fixed to 110 of the trees, the trees selected being at the nearest point to the servicemen's homes.

How is it significant?

The Calder Woodburn Memorial Avenue is of historic, aesthetic and social significance to the State of Victoria.

Why is it significant?

The Calder Woodburn Memorial Avenue is historically significant for its commemorative association with servicemen who died during the Second World War. Planted by Fen Woodburn between 1945 and 1949 initially as a memorial to his son Calder, the Avenue is the grandest and largest of the Second World War commemorative planting in Victoria and is important for its use of only Eucalyptus species. The use of Australian native trees is particularly historically significant when contrasted to the almost universal use of exotic species for

First World War memorial avenues and is consistent with a different view of Australian national consciousness which emerged after the fall of Singapore in 1942.

The Calder Woodburn Memorial Avenue is aesthetically significant as a prominent landscape planting of more than 2,400 trees over a length of nearly 20 kilometres along the Goulburn Valley Highway. About one third are *Eucalyptus camaldulensis*, and the other two thirds consists of roughly equal numbers of *Eucalyptus cladocalyx*, *Eucalyptus microcarpa*, *Eucalyptus melliodora*, *Eucalyptus maculata*, *Eucalyptus polyanthemos*, and *Eucalyptus sideroxylon*. There are some *Eucalyptus leucoxylon*, *Eucalyptus citriodora*, and a few other unidentified *Eucalyptus* species. The whole forms an outstanding designed landscape and roadside planting of a scale and complexity not seen in Victoria. The uniform planting, tree form, size and maturity provides an outstanding landscape forms a dominant feature in the flat surrounding countryside, which is largely cleared for agriculture. The various bark characteristics and the alternating Ironbark and Lemon-scented Gums which provide contrasting texture and colours are also of interest. The visual impression, lineal form, planting density and landscape character of the planting are distinctive and contribute strongly to the experience of the road user. The planting is a rare example in Victoria using four rows of formally planted trees.

The Calder Woodburn Memorial Avenue is socially important for its relationship with the community as a memorial to servicemen who died during the Second World War. The Avenue was conceived as a living memorial and is recognised by the Returned Services League and the community for its continuing commemorative importance.

Permit Exemptions

General Exemptions:

General exemptions apply to all places and objects included in the Victorian Heritage Register (VHR). General exemptions have been designed to allow everyday activities, maintenance and changes to your property, which don't harm its cultural heritage significance, to proceed without the need to obtain approvals under the Heritage Act 2017.

Places of worship: In some circumstances, you can alter a place of worship to accommodate religious practices without a permit, but you must [notify](#) the Executive Director of Heritage Victoria before you start the works or activities at least 20 business days before the works or activities are to commence.

Subdivision/consolidation: Permit exemptions exist for some subdivisions and consolidations. If the subdivision or consolidation is in accordance with a planning permit granted under Part 4 of the *Planning and Environment Act 1987* and the application for the planning permit was referred to the Executive Director of Heritage Victoria as a determining referral authority, a permit is not required.

Specific exemptions may also apply to your registered place or object. If applicable, these are listed below. Specific exemptions are tailored to the conservation and management needs of an individual registered place or object and set out works and activities that are exempt from the requirements of a permit. Specific exemptions prevail if they conflict with general exemptions.

Find out more about heritage permit exemptions [here](#).

Specific Exemptions:

General Conditions: 1. All exempted alterations are to be planned and carried out in a manner which prevents damage to the fabric of the registered place or object. General Conditions: 2. Should it become apparent during further inspection or the carrying out of alterations that original or previously hidden or inaccessible details of the place or object are revealed which relate to the significance of the place or object, then the exemption covering such alteration shall cease and the Executive Director shall be notified as soon as possible. General Conditions: 3. If there is a conservation policy and plan approved by the Executive Director, all works shall be in accordance

with it. General Conditions: 4. Nothing in this declaration prevents the Executive Director from amending or rescinding all or any of the permit exemptions. Nothing in this declaration exempts owners or their agents from the responsibility to seek relevant planning or building permits from the responsible authority where applicable. No permits are required for works which are in accordance with the *Calder Woodburn Memorial Avenue Conservation Management Plan* prepared by John Patrick Pty Ltd dated August 2001

Construction dates 1945,
Heritage Act Categories Registered place,
Other Names Calder Woodburn Avenue of Honour, Avenue of Honour,
Hermes Number 5167
Property Number

History

HISTORY OF PLACE:

The Calder Woodburn Memorial Avenue was planted between 1945 and 1949 by Mr J L F (Fen) Woodburn as a living memorial to his son Calder who lost his life while serving abroad with the Royal Australian Air Force. Calder Woodburn graduated from Dookie Agricultural College in 1936 and enlisted with the Royal Australian Air Force in 1940. Woodburn was posted to the 455 Squadron and arrived in England in 1941. He was involved in laying mines along the French coastline, and on one of these missions in April 1942 he failed to return.

In late 1943 Fen Woodburn began discussions with the Country Roads Board (CRB) about a memorial to his son. Offering to finance the project Woodburn planned to plant two rows of trees for a distance of 9.5kms along the Goulburn Valley Highway. During the second half of 1945, 152 trees were planted, starting near the Seven Creek's bridge and moving south. A total of 425 trees had been planted by August 1946. Woodburn planted all the trees. By August 1947 the work originally envisaged had been completed with a total of 1406 trees being planted. Woodburn then planned to extend the avenue by two or three miles and in 1948 a further 638 trees were planted. It was then decided to continue the planting to the Murchison - Violet Town Road and a further 500 trees were planted. The final avenue planting comprised of 2,544 trees and is planted in 4 rows along the Highway.

Woodburn stated that the Avenue should be a memorial to all local servicemen who did not return from the Second World War. Name plates were fixed to a number of the trees, the trees selected being at the nearest point to the servicemen's homes. Various CRB officials and Mr Venville of the Forest Commission who raised the plants at the Macedon Nursery, and assisted with the planning are also honoured.

Assessment Against Criteria

g. The importance of the place or object in demonstrating social or cultural associations

The Calder Woodburn Memorial Avenue is socially important due to relationship with the community as a memorial to servicemen who lost their life during the Second World War. The Avenue was conceived as living memorial and is recognised by the Returned Services League for its commemorative importance. The unveiling of a memorial in 1995 listing the names of lost servicemen continues the community appreciation and memorial values of the Avenue

Extent of Registration

1. All of the land marked L1 on Diagram Number 1975 held by the Executive Director being the Goulburn Valley Highway road reserve extending approximately 19.7km between the Murchison-Violet Town Road and Seven Creeks but excluding the road pavement and shoulders to a width of 13.0m from the centre line of the road.
 2. All of the *Eucalyptus* spp. trees planted in four rows along the Goulburn Valley Highway and all of the memorial name plaques associated with 110 of the trees within the land marked L1 on Diagram Number 1975 held by the Executive Director.
-

This place/object may be included in the Victorian Heritage Register pursuant to the Heritage Act 2017. Check the Victorian Heritage Database, selecting 'Heritage Victoria' as the place source.

For further details about Heritage Overlay places, contact the relevant local council or go to Planning Schemes Online <http://planningschemes.dpcd.vic.gov.au/>