

MAROONDAH AQUEDUCT, INCLUDING ALL ASSOCIATED STRUCTURES AND WORKS



HO2 Pipe 8.jpg



2 - Maroondah Aqueduct
Kangaroo Ground Eltham -
Shire of Eltham Heritage
Study 1992 - Colour 1



2 - Maroondah Aqueduct
Kangaroo Ground Eltham
N02 - Shire of Eltham
Heritage Study 1992 -
Inverted syphon across
Watsons Creek, one of
fourteen totalling 14.88 km of
the 65.97 km total length of
the Maroondah Aqueduct



2 - Maroondah Aqueduct
Kangaroo Ground Eltham
N03 - Shire of Eltham
Heritage Study 1992 -
Inverted syphon across
Watsons Creek, one of
fourteen totalling 14.88 km of
the 65.97 km total length of
the Maroondah Aqueduct



2 - Maroondah Aqueduct
Kangaroo Ground Eltham
N04 - Shire of Eltham
Heritage Study 1992 -
Western End of the above
mentioned syphon
discharging into a section of
open aqueduct



2 - Maroondah Aqueduct
Kangaroo Ground Eltham
N05 - Shire of Eltham
Heritage Study 1992 - Tunnel
Entrance



2 - Maroondah Aqueduct
Kangaroo Ground Eltham
N06 - Shire of Eltham
Heritage Study 1992 - Silver
pipe carries groundwater from
abutting land over the
aqueduct



2 - Maroondah Aqueduct
Kangaroo Ground Eltham
N07 - Shire of Eltham
Heritage Study 1992 - Silver
pipe carries groundwater from
abutting land over the
aqueduct



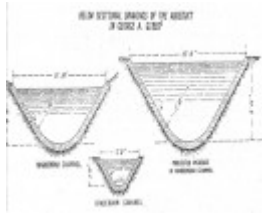
2 - Maroondah Aqueduct
Kangaroo Ground Eltham
N08 - Shire of Eltham
Heritage Study 1992 - Road
Bridge over the aqueduct,
Nicholas Lane



2 - Maroondah Aqueduct
Kangaroo Ground Eltham
N09 - Shire of Eltham
Heritage Study 1992 - Road
Bridge over the aqueduct,
Nicholas Lane



2 - Maroondah Aqueduct
Kangaroo Ground Eltham
N10 - Shire of Eltham
Heritage Study 1992 - Eltham
Yarra Glen Rd Bridge



2 - Maroondah Aqueduct
Kangaroo Ground Eltham
N11 - Shire of Eltham
Heritage Study 1992



2 - Maroondah Aqueduct
Kangaroo Ground Eltham
N12 - Shire of Eltham
Heritage Study 1992 -
Opening of the Maroondah
Aqueduct in July 1891



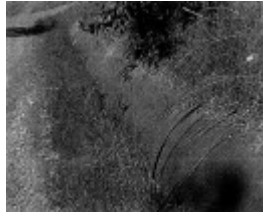
2 - Maroondah Aqueduct
Kangaroo Ground Eltham
N13 - Shire of Eltham
Heritage Study 1992 -
Disused Sections of
Aqueduct



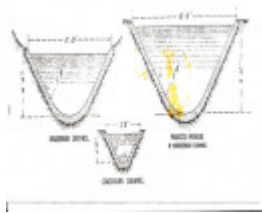
2 - Maroondah Aqueduct
Kangaroo Ground Eltham
N14 - Shire of Eltham
Heritage Study 1992 -
Disused Sections of
Aqueduct



2 - Maroondah Aqueduct Kangaroo Ground Eltham N15 - of Eltham Heritage Study 1992 - Section of Aqueduct at Research that has been removed/filled in and replaced by a pipeline. A tunnel began/begins here. The surviving radiata pine tree plantings



MAROONDAH AQUEDUCT - Nillumbik Shire Heritage Study 1997



HO2 Channel Sketch.jpg



HO2 grassy hill.jpg



HO2 Pipe 1.jpg



HO2 Pipe 10.jpg



2 - Maroondah Aqueduct Kangaroo Ground Eltham N - Shire of Eltham Heritage Study 1992



HO2 Pipe 11.jpg



HO2 Pipe 12.jpg



HO2 Pipe 2.jpg



HO2 Pipe 3.jpg



HO2 Pipe 4.jpg



HO2 Pipe 5.jpg



HO2 Pipe 6.jpg



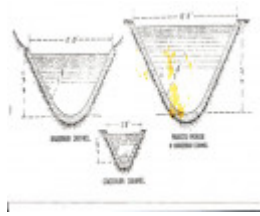
HO2 Pipe 7.jpg



HO2 Pipe 9.jpg



HO2 Pipe Opening.jpg



2 - Maroondah Aqueduct
Kangaroo Ground Eltham -
Shire of Eltham Heritage
Study 1992 - Channel Sketch



2 - Maroondah Aqueduct
Kangaroo Ground Eltham -
Shire of Eltham Heritage
Study 1992 - Grassy hill



2 - Maroondah Aqueduct
Kangaroo Ground Eltham -
Shire of Eltham Heritage
Study 1992 - Colour 10



2 - Maroondah Aqueduct
Kangaroo Ground Eltham -
Shire of Eltham Heritage
Study 1992 - Colour 11



2 - Maroondah Aqueduct
Kangaroo Ground Eltham -
Shire of Eltham Heritage
Study 1992 - Colour 12



2 - Maroondah Aqueduct
Kangaroo Ground Eltham -
Shire of Eltham Heritage
Study 1992 - Colour 2



2 - Maroondah Aqueduct
Kangaroo Ground Eltham -
Shire of Eltham Heritage
Study 1992 - Colour 3



2 - Maroondah Aqueduct
Kangaroo Ground Eltham -
Shire of Eltham Heritage
Study 1992 - Colour 4



2 - Maroondah Aqueduct
Kangaroo Ground Eltham -
Shire of Eltham Heritage
Study 1992 - Colour 5



2 - Maroondah Aqueduct
Kangaroo Ground Eltham -
Shire of Eltham Heritage
Study 1992 - Colour 6



2 - Maroondah Aqueduct
Kangaroo Ground Eltham -
Shire of Eltham Heritage
Study 1992 - Colour 7



2 - Maroondah Aqueduct
Kangaroo Ground Eltham -
Shire of Eltham Heritage
Study 1992 - Colour 8



2 - Maroondah Aqueduct
Kangaroo Ground Eltham -
Shire of Eltham Heritage
Study 1992 - Colour 9



2 - Maroondah Aqueduct
Kangaroo Ground Eltham -
Shire of Eltham Heritage
Study 1992 - Pipe Opening

Location

KANGAROO GROUND and RESEARCH and ELTHAM NORTH and off Allendale Road, east of Ryans Road
DIAMOND CREEK, NILLUMBIK SHIRE

Municipality

NILLUMBIK SHIRE

Level of significance

Included in Heritage Overlay

Heritage Overlay Numbers

HO2

Heritage Listing

Nillumbik Shire

Statement of Significance

Last updated on - January 5, 2010

REVISED STATEMENT OF SIGNIFICANCE, CONTEXT, 2010

What is significant?

The pipeline associated with the Maroondah aqueduct pipe track, part of which is visible at Allendale Road.

The mature exotic plantings (including the Monterey pines) along the pipeline.

How is it significant?

The pipeline is historically and technically significant to the Shire of Nillumbik.

The associated plantings (including the Monterey pines) are aesthetically and historically significant to the Shire of Nillumbik.

Why is it significant?

The aqueduct is historically and technically significant because it illustrates the design and construction of a late nineteenth century aqueduct in hilly terrain, was a major engineering work, part of the development of Melbourne's water supply and a reflection of the City's growing population (Criteria A & F).

The mature exotic plantings are historically significant, because they reflect the practice of using vegetation to stabilise the embankments and surroundings of the aqueduct and associated pipelines (Criterion A). The plantings are aesthetically significant, for their collective contribution to the landscape associated with the aqueduct (Criterion E).

Heritage Study/Consultant	Nillumbik - Shire of Eltham Heritage Study, David Bick, 1992; Nillumbik - Nillumbik Shire Heritage Study, Graeme Butler & Assoc, 1997;
Construction dates	1885, 1908, 1915, 1970,
Other Names	Entire length at various sites from Skyline Road, Christmas Hills to Allendale Road, Diamond Creek and including Research and Eltham North,
Hermes Number	55052
Property Number	

Historical Australian Themes**TRANSPORT****3.11.1 Regulating waterways****3.11.5 Establishing water supplies****Usage/Former Usage**

Original Use:

Aqueduct

Later Use:

Partly disused; some sections are a linear park

Physical Description 1

The socketed 'metal pipeline is visible in the south verge of this section of Allendale Road.

This place/object may be included in the Victorian Heritage Register pursuant to the Heritage Act 2017. Check the Victorian Heritage Database, selecting 'Heritage Victoria' as the place source.

For further details about Heritage Overlay places, contact the relevant local council or go to Planning Schemes Online <http://planningschemes.dpcd.vic.gov.au/>