

WAR MEMORIAL TOWER, MATURE PLANTING AND PARK, ELTHAM-YARRA GLEN RD



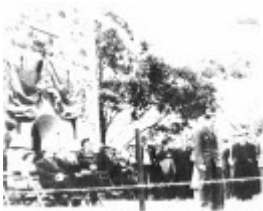
68 - War Memorial and Components Eltham Yarra Gl Rd - Old photograph taken after the completion of the tower, but prior to the installation of the main metal plaque fixed above the arch ELHPC no.406 - Shire of Eltham Heritage Study 1992



68 - War Memorial and Components Eltham Yarra Gl Rd_02 - Shire of Eltham Heritage Study 1992



68 - War Memorial and Components Eltham Yarra Gl Rd_03 - Detail of the metal plaque showing the original main section and added 1939-1945 plaques on either side of the arch - Shire of Eltham Heritage Study 1992



68 - War Memorial and Components Eltham Yarra Gl Rd_04 - Dedication of the 1939-1945 War Memorial on 16 November 1951 by the Governor of Victoria Sir Dallas Brooks ELHPC No. 410 - Shire of Eltham Heritage Study 1992



68 - War Memorial and Components Eltham Yarra Gl Rd_05 - Refreshments at the dedication in 1951 ELHPC No. 414 - Shire of Eltham Heritage Study 1992



68 - War Memorial and Components Eltham Yarra Gl Rd_06 - View from the tower showing the tops of the trees planted around the site (not dated) ELHPC No.415 - Shire of Eltham Heritage Study 1992



68 - War Memorial and Components Eltham Yarra GI Rd_07 - Shire of Eltham Heritage Study 1992



68 - War Memorial and Components Eltham Yarra GI Rd_08 - Monterey cypress trees are planted around the site on the boundaries - Shire of Eltham Heritage Study 1992



68 - War Memorial and Components Eltham Yarra GI Rd_09 - Shire of Eltham Heritage Study 1992



War Memorial and Components Eltham Yarra GI Rd Colour 1 - Shire of Eltham Heritage Study 1992



War Memorial and Components Eltham Yarra GI Rd Colour 2 - Shire of Eltham Heritage Study 1992



War Memorial and Components Eltham Yarra GI Rd Colour 3 - Shire of Eltham Heritage Study 1992



War Memorial and Components Eltham Yarra GI Rd Black & White 1 - Shire of Eltham Heritage Study 1992



War Memorial and Components Eltham Yarra GI Rd Colour 4 - Shire of Eltham Heritage Study 1992



War Memorial and Components Eltham Yarra GI Rd Black & White 2 - Shire of Eltham Heritage Study 1992



War Memorial and Components Eltham Yarra GI Rd Colour 5 - Shire of Eltham Heritage Study 1992

Location

385 ELTHAM-YARRA GLEN ROAD KANGAROO GROUND, NILLUMBIK SHIRE

Municipality

NILLUMBIK SHIRE

Level of significance

Included in Heritage Overlay

Heritage Overlay Numbers

HO49

Heritage Listing

Nillumbik Shire

Statement of Significance

Last updated on - January 5, 2010

REVISED STATEMENT OF SIGNIFICANCE, CONTEXT, 2010

What is significant?

The fabric of the site including: the c1925-26 war memorial, the mature Monterey Cypress trees (which form a windbreak around the perimeter of park) and other planted species (Bangalay- *Eucalyptus botryoides*, Victorian Box- *Pittosporum undulatum*, English Oak- *Quercus robur* and Australian Fan palm- *Livistona australis*) and the surrounding site to a radius of 150 metres . The c1951 sandstone caretaker's cottage is contributory to the site. The c1974 firespotter's cabin (on the tower) is an intrusive element.

How is it significant?

The war memorial tower is architecturally, socially, aesthetically and historically significant to the Shire of Nillumbik

The caretaker's cottage and the Monterey Cypress trees are historically and aesthetically significant to the Shire of Nillumbik.

Why is it significant?

The war memorial is historically and architecturally significant because it was designed by prominent architects, Stephenson and Meldrum, based upon a sketch by artist Harold Herbert, and because it has ties to prominent community members including Professor William Osborne, who donated stone for the construction, and Governor-General, Lord Stonehaven, who opened the building on 11 November 1926 (Criterion H). It is aesthetically significant for its skilled use of local sandstone (Criteria E). The war memorial is historically and socially significant as a representative example of a local war memorial and as a physical representation of the impact that war had on the community (Criteria D & G).

Heritage Study/Consultant Nillumbik - Shire of Eltham Heritage Study, David Bick, 1992;

Construction dates 1925, 1974,

Architect/Designer Stephenson & Meldrum,

Hermes Number 55592

Historical Australian Themes

THIS PLACE DOES NOT ILLUSTRATE ANY OF THE MAJOR THEMES OF THE SHIRE'S HISTORY. THE WAR MEMORIAL TOWER IS A ONE-OFF STRUCTURE

2.2 Adapting to diverse environments

3.16.1 Dealing with hazards and disasters

4.5 Making settlements to serve rural Australia

8.8 Remembering the fallen

8.14 Living in the country and rural settlements

Physical Description 1

Tower

Style traditional ornamental structure.

Design one-off.

Plan square.

Multi-storeyed.

Walls local sandstone faced concrete.

Roof flat concrete slab.

Features are the design, memorial plaques, ground floor door, openings, the adjacent stone building and the mature site planting.

Sandstone Building

Style a-stylar.

Design utilitarian.

Plan rectangular.

Single storied.

Walls apparently solid sandstone.

Roof gabled.

Features are the utilitarian nature of this service building and its role as an original/early component of the site.

Planting

The War Memorial Tower is centrally positioned on the highest point of the site and surrounded on all sides by Monterey Cypress trees (*Cupressus macrocarpa*). The park itself consists of a very simple treatment with a gravel vehicle access road through a grassed area with various trees dotted around the lawn. Tree species include: Monterey Cypress (*Cupressus macrocarpa*), *Eucalyptus botryoides*, *Pittosporum undulatum*, *Quercus*

robur and Livistona australis.

Usage/Formal Usage

Original Use: War memorial and lookout tower

Later use: War memorial, lookout and fire spotter tower

This place/object may be included in the Victorian Heritage Register pursuant to the Heritage Act 2017. Check the Victorian Heritage Database, selecting 'Heritage Victoria' as the place source.

For further details about Heritage Overlay places, contact the relevant local council or go to Planning Schemes Online <http://planningschemes.dpcd.vic.gov.au/>