

SOUTER HOUSE



73 - Souter House 19
Falkiner St Eltham - Shire of
Eltham Heritage Study 1992



73 - Souter House 19
Falkiner St Eltham_02 -
Souter House in 1949 - Shire
of Eltham Heritage Study
1992



73 - Souter House 19
Falkiner St Eltham_03 -
Souter House present day -
Shire of Eltham Heritage
Study 1992



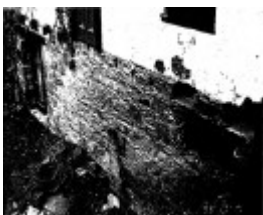
73 - Souter House 19
Falkiner St Eltham_04 - North
West (rear corner) of the
Souter House in 1949 - Shire
of Eltham Heritage Study
1992



73 - Souter House 19
Falkiner St Eltham_05 -
Original outside entry to the
basement floor at the south
east corner of the building in
1949. The ground in front of
the Souter House was
excavated and removed in
recent years by the present
owners - Shire of



73 - Souter House 19
Falkiner St Eltham_07 - Shire
of Eltham Heritage Study
1992



73 - Souter House 19
Falkiner St Eltham_08 - Shire
of Eltham Heritage Study
1992



Souter House 19 Falkiner St
Eltham Black & White 1 -
Shire of Eltham Heritage
Study 1992



Souter House 19 Falkiner St
Eltham Colour 1 - Shire of
Eltham Heritage Study 1992



Souter House 19 Falkiner St
Eltham Colour 3 - Shire of
Eltham Heritage Study 1992



Souter House 19 Falkiner St
Eltham Black & White 2 -
Shire of Eltham Heritage
Study 1992



Souter House 19 Falkiner St
Eltham Black & White 3 -
Shire of Eltham Heritage
Study 1992



Souter House 19 Falkiner St
Eltham Black & White 4 -
Shire of Eltham Heritage
Study 1992

Location

23 FALKINER STREET ELTHAM, NILLUMBIK SHIRE

Municipality

NILLUMBIK SHIRE

Level of significance

Included in Heritage Overlay

Heritage Overlay Numbers

HO54

Heritage Listing

Nillumbik Shire

Statement of Significance

Last updated on - January 5, 2010

REVISED STATEMENT OF SIGNIFICANCE, CONTEXT, 2010

What is significant?

The c1850s house, the c1950s-1980s additions and alterations and the site to a radius of 30 metres.

How is it significant?

The house is historically, architecturally and aesthetically significant to the Shire of Nillumbik.

Why is it significant?

The house is historically significant as the oldest mud brick building in the Shire of Nillumbik, as one of less than half a dozen buildings from the 1850s that survive in the Shire (Criterion B). Also for its associations with Mervyn Skipper from the well-known Eltham family who was one of the founders of the artist's colony at Montsalvat (Criterion H). The house is architecturally significant because its north section was designed by the noted 'Eltham-style' architect, Alistair Knox, and the two long oregon beams supporting the main floor were added by the noted 'Eltham-style' builder, Horrie Judd (Criterion H).

Heritage Study/Consultant Nillumbik - Shire of Eltham Heritage Study, David Bick, 1992;

Construction dates 1850, 1850,

Hermes Number 55775

Property Number

Historical Australian Themes**EARLY SETTLEMENT**

3.14.2 Using Australian materials in construction

8.10.4 Designing and building fine buildings

8.12 Living in and around Australian homes

8.14 Living in the country and rural settlements

Physical Description 1

Style Victorian.

Design uncommon.

Plan rectangular.

Single storeyed with full size originally windowless basement. Walls local sandstone to basement, mud brick to main floor above.

Roof gabled with eaves, corrugated iron clad. Features are the scale of the building, mud brick walls and sandstone lower storey which has recently been almost fully exposed on the Falkiner Street side. Also the multi-pane windows, which may be original, the gable roof and the large fireplace. The present doors to the basement date from the Brocksopp's time of ownership. The grounds contain mature Elm trees and a plum hedge on the boundary with the adjoining number 55.

Usage/Former Usage

Original Use: Dwelling?

Later Use: Gallery in the basement and dwelling

Present Use: Dwelling

This place/object may be included in the Victorian Heritage Register pursuant to the Heritage Act 2017. Check the Victorian Heritage Database, selecting 'Heritage Victoria' as the place source.

For further details about Heritage Overlay places, contact the relevant local council or go to Planning Schemes Online <http://planningschemes.dpcd.vic.gov.au/>