

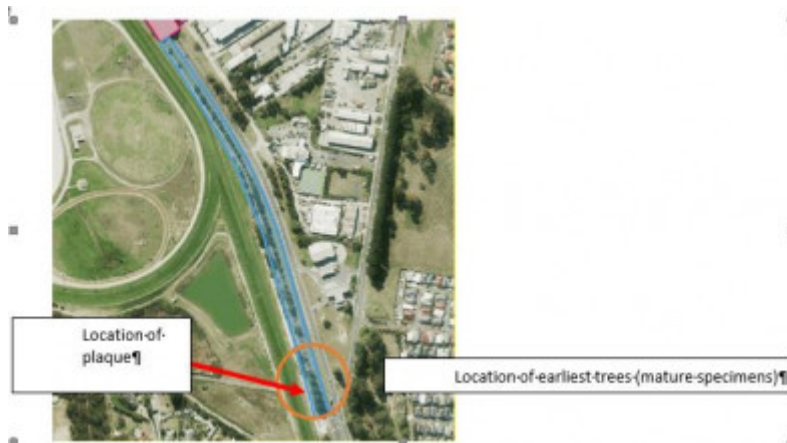
## Avenue of Honour (local significance)



World War Two Memorial  
Planting South Gippsland  
Highway



World War Two Memorial  
Plaque South Gippsland  
Highway



World War Two Memorial Planting location of plaque and early trees

### Location

South Gippsland Highway, CRANBOURNE, Casey City

### Municipality

CASEY CITY

### Level of significance

Included in Heritage Overlay

### Heritage Overlay Numbers

HO208

## Heritage Listing

Casey City

---

### Statement of Significance

Last updated on - January 2, 2022

#### What is significant?

The World War II Memorial planting and plaque, located on the eastern side of South Gippsland Highway, Cranbourne is significant.

Features which contribute to the significance of the place are:

- 5 mature specimens of Turkey Oak *Quercus cerris*, planted in 1951
- Specimens of mature, semi mature and immature English Oak *Quercus robur* planted in line with the mature specimens of Turkey Oak
- The commemorative plaque located to the southern end of the row, beneath the Turkey Oak trees

Features which do not contribute to the significance of the place are:

- Municipal tree plantings which are not part of this row of Oak trees
- Paths and roads

#### How is it significant?

The World War II Memorial planting and plaque is of historical and social significance to the City of Casey.

#### Why is it significant?

The World War II Memorial planting and commemorative plaque is of historical significance as a collection of trees planted and plaque erected to commemorate the service of the local people of Cranbourne who served in World War II. (Criterion A)

The Avenue is of further historical significance as one of the only known memorial plantings within the municipality which commemorates those who served in World War II. (Criterion B)

It is of social significance as a continuing living memorial to those local people who served in World War II, and the community's respect and acknowledgement of this service. The deliberate positioning of the memorial planting as a continuation of the World War I Avenue of Honour is important as it demonstrates the continuing importance of this tradition within the Cranbourne community. The long term, continuing attachment to the place by the local community is evidenced by the efforts to restore the planting, and the use of the whole Avenue and Memorial planting for commemorative events. (Criterion G).

### Theme

8. Building community life

Heritage Study/Consultant	Casey - Casey Heritage Study, Context Pty Ltd, 2004; Cranbourne Town Centre Heritage Overlays Review, Plan Heritage, 2020; Casey - City of Casey Heritage Study: Cranbourne, Knox, Graeme Butler & Associate, 1998;
Hermes Number	63210
Property Number	

---

## Physical Description 1

The World War II memorial planting is a row of Oak trees (predominantly English Oak) located on the western side of the South Gippsland Highway, planted between the intersection of Cameron Street and the southern end of the World War I Avenue of Honour. It is not known whether the original planting was on one side, or both sides of South Gippsland Highway.

Five mature Turkey Oak *Quercus cerris* trees survive, located at the southern end of the row, of the original 1951 planting date. The remainder of the trees are English Oak and vary in age from new plantings through to plantings of approximately 20 years and represent replanting efforts to restore the memorial planting.

A bronze memorial plaque, with the text 'Shire of Cranbourne/ This Avenue of Honour/was planted to commemorate/ All who served in/ His Majesty's Forces/from this district in/ World War II 1939-1945' is set into a large boulder placed beneath the five original Turkey Oaks.

The five mature Turkey Oak trees are in very good condition. The English Oaks vary in condition from very good to fair.

## Physical Conditions

Variable - Good to Fair

## Intactness

Moderate

## Historical Australian Themes

Community & Culture; Commemorating

*This place/object may be included in the Victorian Heritage Register pursuant to the Heritage Act 2017. Check the Victorian Heritage Database, selecting 'Heritage Victoria' as the place source.*

*For further details about Heritage Overlay places, contact the relevant local council or go to Planning Schemes Online <http://planningschemes.dpcd.vic.gov.au/>*