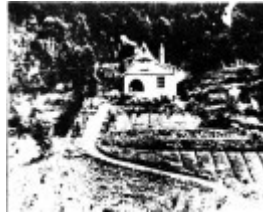


THE ROBINS - PENLEIGH BOYD HOUSE



170 - Penleigh Boyd House
North Warrandyte - Shire of
Eltham Heritage Study 1992



170 - Penleigh Boyd House
North Warrandyte 02 - Shire
of Eltham Heritage Study
1992



170 - Penleigh Boyd House
North Warrandyte 03 - Shire
of Eltham Heritage Study
1992



170 - Penleigh Boyd House
North Warrandyte 04 - Shire
of Eltham Heritage Study
1992



170 - Penleigh Boyd House
North Warrandyte 05 - Shire
of Eltham Heritage Study
1992



170 - Penleigh Boyd House
North Warrandyte 06 - Shire
of Eltham Heritage Study
1992



170 - Penleigh Boyd House
North Warrandyte 07 - Shire
of Eltham Heritage Study
1992



170 - Penleigh Boyd House
North Warrandyte 08 - Shire
of Eltham Heritage Study
1992



170 - Penleigh Boyd House
North Warrandyte 09 - Shire
of Eltham Heritage Study
1992



170 - Penleigh Boyd House
North Warrandyte 10 - Shire
of Eltham Heritage Study
1992



170 - Penleigh Boyd House
North Warrandyte 11 - Shire
of Eltham Heritage Study
1992



170 - Penleigh Boyd House
North Warrandyte 12 - Shire
of Eltham Heritage Study
1992



170 - Penleigh Boyd House
North Warrandyte 13 - Shire
of Eltham Heritage Study
1992



170 - Penleigh Boyd House
North Warrandyte 14 - Shire
of Eltham Heritage Study
1992



170 - Penleigh Boyd House
North Warrandyte 15 - Shire
of Eltham Heritage Study
1992



170 - Penleigh Boyd House
North Warrandyte 16 - Shire
of Eltham Heritage Study
1992



170 - Penleigh Boyd House
North Warrandyte 17 - Shire
of Eltham Heritage Study
1992



170 - Penleigh Boyd House
North Warrandyte 18 - Shire
of Eltham Heritage Study
1992



170 - Penleigh Boyd House
North Warrandyte 19 - Shire
of Eltham Heritage Study
1992



170 - Penleigh Boyd House
North Warrandyte 20 - Shire
of Eltham Heritage Study
1992



170 - Penleigh Boyd House
North Warrandyte 21 - Shire
of Eltham Heritage Study
1992



170 - Penleigh Boyd House
North Warrandyte 22 - Shire
of Eltham Heritage Study
1992



Penleigh Boyd House North
Warrandyte Colour 1 - Shire
of Eltham Heritage Study
1992



Penleigh Boyd House North
Warrandyte Colour 2 - Shire
of Eltham Heritage Study
1992



Penleigh Boyd House North Warrandyte Colour 3 - Shire of Eltham Heritage Study 1992



Penleigh Boyd House North Warrandyte Colour 4 - Shire of Eltham Heritage Study 1992



Penleigh Boyd House North Warrandyte Colour 5 - Shire of Eltham Heritage Study 1992



Penleigh Boyd House North Warrandyte Colour 6 - Shire of Eltham Heritage Study 1992



Penleigh Boyd House North Warrandyte Colour 7 - Shire of Eltham Heritage Study 1992



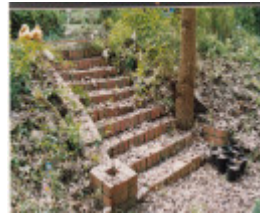
Penleigh Boyd House North Warrandyte Colour 8 - Shire of Eltham Heritage Study 1992



Penleigh Boyd House North Warrandyte Colour 9 - Shire of Eltham Heritage Study 1992



Penleigh Boyd House North Warrandyte Black & White 1 - Shire of Eltham Heritage Study 1992



Penleigh Boyd House North Warrandyte Colour 10 - Shire of Eltham Heritage Study 1992



Penleigh Boyd House North Warrandyte Colour 11 - Shire of Eltham Heritage Study 1992

Location

13 KANGAROO GROUND-WARRANTYTE ROAD NORTH WARRANTYTE, NILLUMBIK SHIRE

Municipality

Level of significance

Included in Heritage Overlay

Heritage Overlay Numbers

HO101

Heritage Listing

Nillumbik Shire

Statement of Significance

Last updated on - January 7, 2010

REVISED STATEMENT OF SIGNIFICANCE, CONTEXT, 2010

What is significant?

The c1913 residence and the rear outbuilding cut into the hill and the surrounding site to a radius of 50 metres.

How is it significant?

The c1913 residence and outbuilding are historically, technically and architecturally significant to the Shire of Nillumbik and potentially of National significance.

Why is it significant?

The house is historically significant because it is associated with the renowned landscape painter, Penleigh Boyd (known for his paintings of the Warrandyte bush) and Penleigh Boyd's son, the influential architect Robin Boyd, who was born there (Criterion H). The house is historically significant because it is one of a number of sites in the Shire associated with prominent artists and because a record of the site's development has been preserved in the sketches of Penleigh Boyd and through Robin Boyd's memoirs (Criterion A).

The house is technically significant because it was one of the first reinforced concrete dwellings in Victoria and Australia (Criterion F). The house is historically and architecturally significant because it was an early example/precursor to the development of the 'Eltham style' of architecture and because, as a result of its picturesque quality, the house became a model for dwellings built by the Shire's artists in succeeding generations, such as the Montsalvat artists' colony (HO82) (Criteria A & F).

Heritage Study/Consultant Nillumbik - Shire of Eltham Heritage Study, David Bick, 1992;

Construction dates 1913,

Hermes Number 63466

Property Number

Historical Australian Themes

ARTISTS AND THE ELTHAM LANDSCAPE AND LIFESTYLE

3.14.2 Using Australian materials in construction

8.10.4 Designing and building fine buildings

8.12 Living in and around Australian homes

8.14 Living in the country and rural settlements

8.10.2 Creating visual arts

Physical Description 1

Style Edwardian.

Design one-off.

Plan rectangular.

Single storeyed with attic over the southern half. Walls solid single skin of earth mixed with concrete to ground floor, plaster and sheet lined to attic rooms. Roof gabled with eaves over southern attic half, lean-to-over the northern half.

Features are the picturesque or cottage ornee design, modest size, the construction, the gable roof with attic rooms (partitioned in recent times), room sized porch the size of a room set fully into the building and with arched sides, sitting room floor level which is lower than the porch and entered directly off it via a landing and steps in the sitting room, with another step up to the dining room. Exterior windows, gable ends, roughcast, half timbering, bell-cast gable roof and other exterior detailing. Also the interior fireplaces, room arrangement and timber staircase and stairwell.

Usage/Former Usage

Original and Later Use: House

This place/object may be included in the Victorian Heritage Register pursuant to the Heritage Act 2017. Check the Victorian Heritage Database, selecting 'Heritage Victoria' as the place source.

For further details about Heritage Overlay places, contact the relevant local council or go to Planning Schemes Online <http://planningschemes.dpcd.vic.gov.au/>