

---

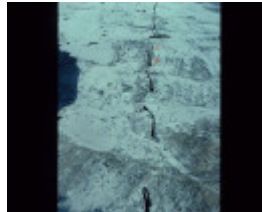
# CAPE BRIDGEWATER ROAD, GREAT SOUTH WEST WALK, CAPE BRIDGEWATER



CAPE BRIDGEWATER ROAD, GREAT SOUTH WEST WALK, CAPE BRIDGEWATER FEATURE



CAPE BRIDGEWATER ROAD, GREAT SOUTH WEST WALK, CAPE BRIDGEWATER



CAPE BRIDGEWATER ROAD, GREAT SOUTH WEST WALK, CAPE BRIDGEWATER FEATURE

---

## Location

BLOWHOLES ROAD CAPE BRIDGEWATER, GLENELG SHIRE

## Municipality

GLENELG SHIRE

## Level of significance

Heritage Inventory Site

## Heritage Inventory (HI) Number

H7121-0011

## Heritage Listing

Victorian Heritage Inventory

---

Interpretation of Site      Old road used by wagons, now part of the Great South West Walking Trail.

Archaeological Significance	The area of road cutting is of archaeological significance as it is an example of the early road system in the area.
Historical Significance	The 'old' Cape Bridgewater Rd is of historical value as it relates to the early transport system of Cape Bridgewater and Portland.
Hermes Number	6593
Property Number	

---

## History

Built in 1890s for wagons taking fish from fleet to railway at Portland.

*This place/object may be included in the Victorian Heritage Register pursuant to the Heritage Act 2017. Check the Victorian Heritage Database, selecting 'Heritage Victoria' as the place source.*

*For further details about Heritage Overlay places, contact the relevant local council or go to Planning Schemes Online <http://planningschemes.dpcd.vic.gov.au/>*