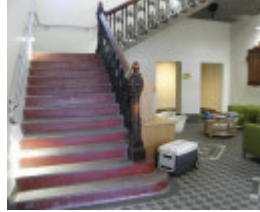

Former Yarraville State School No 1501



B5748 Former State School



B5748 Former State School



B5748 Former State School

Location

59 Francis Street,, YARRAVILLE VIC 3013 - Property No B5748

Municipality

MARIBYRNONG CITY

Level of significance

Local

Heritage Listing

National Trust

Statement of Significance

Last updated on - August 3, 2005

A picturesque school building in a red brick Queen Anne mode, designed in 1889 by S E Bindley of the Public Works Department. The design incorporates the earlier school building of 1874 in a composition which centres on an ornamental tower with a slightly bellcast roof profile, and the majority of the window and door openings have stilted segmental arched heads. Some of the windows were enlarged in 1912, when internal alterations and additions were also made, but the building remains basically unaltered, and a fine example of its type.

Classified 10/07/1986

File note: February 2012. Used as Community Centre. Currently under restoration.

Other Names Community Centre,

Hermes Number 66081

Property Number

This place/object may be included in the Victorian Heritage Register pursuant to the Heritage Act 2017. Check the Victorian Heritage Database, selecting 'Heritage Victoria' as the place source.

For further details about Heritage Overlay places, contact the relevant local council or go to Planning Schemes Online <http://planningschemes.dpcd.vic.gov.au/>