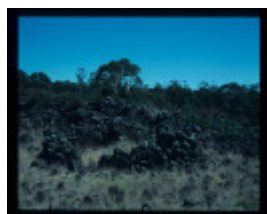


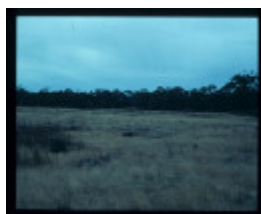
LAKE CONDAH - COMPLEX A



LAKE CONDAH - COMPLEX
A



LAKE CONDAH - COMPLEX
A FEATURE



LAKE CONDAH - COMPLEX
A



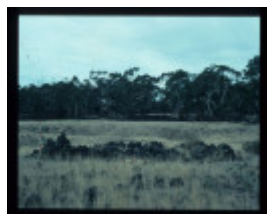
LAKE CONDAH - COMPLEX
A FEATURE



LAKE CONDAH - COMPLEX
A FEATURE



LAKE CONDAH - COMPLEX
A FEATURE



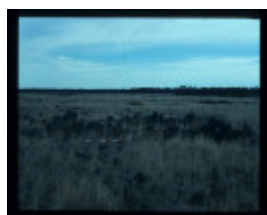
LAKE CONDAH - COMPLEX
A



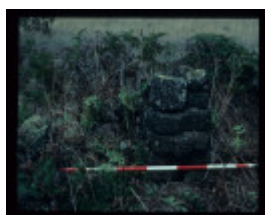
LAKE CONDAH - COMPLEX
A FEATURE



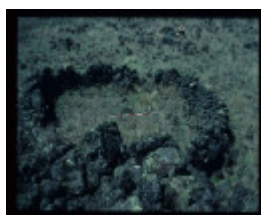
LAKE CONDAH - COMPLEX
A FEATURE



LAKE CONDAH - COMPLEX
A



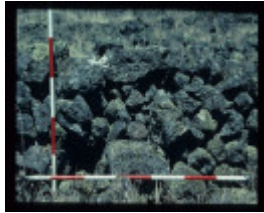
LAKE CONDAH - COMPLEX
A



LAKE CONDAH - COMPLEX
A FEATURE



LAKE CONDAH - COMPLEX
A FEATURE



LAKE CONDAH - COMPLEX
A FEATURE



LAKE CONDAH - COMPLEX
A



LAKE CONDAH - COMPLEX
A FEATURE



LAKE CONDAH - COMPLEX
A



LAKE CONDAH - COMPLEX
A

Location

OFF LAKE CONDAH TRACK LAKE CONDAH, GLENELG SHIRE

Municipality

GLENELG SHIRE

Level of significance

Heritage Inventory Site

Heritage Inventory (HI) Number

H7221-0223

Heritage Listing

Victorian Heritage Inventory

Interpretation of Site	Heritage Inventory Interpretation: This site is possibly an outstation of the "Grafton" squatting run.
Hermes Number	6671
Property Number	

History

Heritage Inventory History of Site: Incoming Europeans, many from the Scottish Highlands, used the country for various activities including gathering wattle bark, cattle and sheep grazing. None placed their major homesteads on the Stones. Instead shepherds and boundary riders built rough cottages from the abundant local stone.

This place/object may be included in the Victorian Heritage Register pursuant to the Heritage Act 2017. Check the Victorian Heritage Database, selecting 'Heritage Victoria' as the place source.

For further details about Heritage Overlay places, contact the relevant local council or go to Planning Schemes Online <http://planningschemes.dpcd.vic.gov.au/>