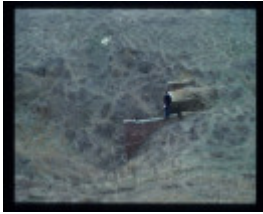

NEW LANGI LOGAN NO.1



NEW LANGI LOGAN NO.1



NEW LANGI LOGAN NO.1



NEW LANGI LOGAN NO.1



NEW LANGI LOGAN NO.1



NEW LANGI LOGAN NO.1

Location

TATYOON ROAD AND STATION ROAD DENICULL CREEK, ARARAT RURAL CITY

Municipality

ARARAT RURAL CITY

Level of significance

Heritage Inventory Site

Heritage Inventory (HI) Number

H7423-0011

Heritage Listing

Victorian Heritage Inventory

Hermes Number 6785

Property Number

History

Heritage Inventory History of Site: In 1932 the New Langi Logan Deep Leads Company was formed; its leases covered most of the ground held and partly worked by two previous companies - New Langi Logan and Langi Logan South - that had ceased operations in the early 1920s. Water difficulties forced the new company to close down before it reached the production stage.

This place/object may be included in the Victorian Heritage Register pursuant to the Heritage Act 2017. Check the Victorian Heritage Database, selecting 'Heritage Victoria' as the place source.

For further details about Heritage Overlay places, contact the relevant local council or go to Planning Schemes Online <http://planningschemes.dpcd.vic.gov.au/>