

---

# Eucalyptus denticulata



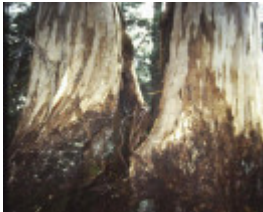
T11052 Eucalyptus denticulata



T11052 Eucalyptus denticulata



T11052 Eucalyptus denticulata



T11052 Eucalyptus denticulata



T11052 Eucalyptus denticulata

---

## Location

Gap Road,, BONANG VIC 3888 - Property No T11052

## Municipality

EAST GIPPSLAND SHIRE

## Level of significance

State

## Heritage Listing

National Trust

---

## Statement of Significance

Last updated on - June 7, 2004

Outstanding size  
Curious growth form

Known as the 'Twin Trees', there is some debate as to whether the specimen is two trees fused together or one tree with two trunks. However, this giant makes an impressive canopy dominating the aerial environment for some 26 metres. Each side of the tree shows significant wounding and a number of fire scars on the main trunk. The tree is located on Gap Road 1.3km from the bridge over the Bonang River.

Measurements: 15/10/1993  
Spread (m): 26.8  
Girth (m): 11.7  
Height (m): 64  
Estimated Age (yrs): 300  
Condition: Good

Access: Unrestricted  
Classified: 11/11/1993

Other Names      Shining Gum,

Hermes Number    70560

Property Number

---

*This place/object may be included in the Victorian Heritage Register pursuant to the Heritage Act 2017. Check the Victorian Heritage Database, selecting 'Heritage Victoria' as the place source.*

*For further details about Heritage Overlay places, contact the relevant local council or go to Planning Schemes Online <http://planningschemes.dpcd.vic.gov.au/>*