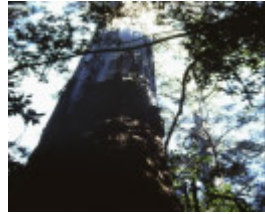

Eucalyptus regnans



T11055 Eucalyptus regnans



T11055 Eucalyptus regnans

Location

West Barham Big Trees Flora Reserve, Beech Forest-Apollo Bay Rd., APOLLO BAY VIC 3233 - Property No T11055

Municipality

COLAC OTWAY SHIRE

Level of significance

Regional

Heritage Listing

National Trust

Statement of Significance

Last updated on - June 16, 2008

Outstanding size

A stand of approximately fifty Mountain Ash (*Eucalyptus regnans*) growing on steep land to the east of the Barham River West Branch. The trees are even in size; many with a circumference of 10-12m. The understorey is very dense although the tops of all the trees have been lost in storms and exhibit large dead branches at the top of the crown.

These trees are located in West Barham Big Trees Flora Reserve, off Beech Forest-Apollo Bay Rd, 1km west.

Measurements: 04/1987

Spread (m): -

Girth (m): 12.4
Height (m): 76
Estimated Age (yrs): 300
Condition: Fair

Access: Unrestricted
Classified: 14/05/1987

Other Names Mountain Ash,

Hermes Number 70563

Property Number

This place/object may be included in the Victorian Heritage Register pursuant to the Heritage Act 2017. Check the Victorian Heritage Database, selecting 'Heritage Victoria' as the place source.

For further details about Heritage Overlay places, contact the relevant local council or go to Planning Schemes Online <http://planningschemes.dpcd.vic.gov.au/>