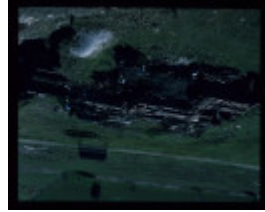

BERRY UNITED MINE



BERRY UNITED MINE



BERRY UNITED MINE

Location

252 ULLINA-KOOROCHEANG ROAD SMEATON, HEPBURN SHIRE

Municipality

HEPBURN SHIRE

Level of significance

Heritage Inventory Site

Heritage Inventory (HI) Number

H7623-0011

Heritage Listing

Victorian Heritage Inventory

Hermes Number 7062

Property Number

History

Heritage Inventory History of Site: Dr J W Gregory, Director of the Geological Survey after visiting the northern end of the Berry Deep lead concluded that the disturbance that had been encountered by the Spring Hill and central Lead mine was due to the eruption of material from Clover Hill which resulted in deep subsidence of the surrounding area. He concluded that the evidence suggested that the Berry Deep lead would be found to the north of the subsided zone. The Berry United Company commenced in 1902 to explore to the north of the disturbed zone. Yields were low in comparison to those obtained south of the disturbance; suggesting that the true course of the Berry Lead had not been located. The Berry United Company produced only 12,500 ounces of gold prior to its closure. This disappointing production discouraged further exploration. The Berry United thus remained the northern most mine.

This place/object may be included in the Victorian Heritage Register pursuant to the Heritage Act 2017. Check the Victorian Heritage Database, selecting 'Heritage Victoria' as the place source.

For further details about Heritage Overlay places, contact the relevant local council or go to Planning Schemes Online <http://planningschemes.dpcd.vic.gov.au/>