

Elaeodendron croceum



T11240 Elaeodendron croceum



T11240 Elaeodendron croceum



T11240 Elaeodendron croceum



T11240 Elaeodendron croceum



T11240 Elaeodendron croceum



T11240 Elaeodendron croceum



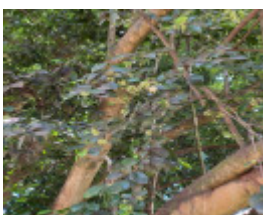
T11240 Elaeodendron croceum



Werribee Park trees - 49



Werribee Park trees - 48



Werribee Park trees - 53



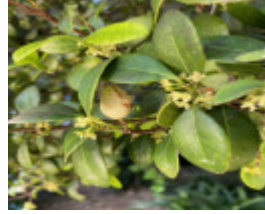
Werribee Park trees - 51



Werribee Park trees - 50



Werribee Park trees - 52



Werribee Park trees - 57



Werribee Park trees - 55

Location

Werribee Park Mansion, 320 K Road,, WERRIBEE VIC 3030 - Property No T11240

Municipality

WYNDHAM CITY

Level of significance

Regional

Heritage Listing

National Trust

Statement of Significance

Last updated on - March 2, 2023

What is significant?

Contribution to the landscape of historic garden
Rare or localised

A native to South Africa, this species is rare in cultivation in Victoria. Other known examples occur in Geelong (1), Camperdown (1) Royal Botanic Gardens(8) This species has been included on the Rare & Endangered List. It is located near the main house on the left hand side.

Measurements: c1985
Spread (m): 14
Girth (m): 4.6
Height (m): 13.5
Estimated Age (yrs): 110
Condition: Good

Measurements: 14/11/2011
Spread (m): N-S 18.2, E-W 20.2,
Girth (m):2 (Multi trunked at ground level. Has eight main trunks. Measured is largest trunk at 0.5m above ground)
Height (m): 19.1

Condition: Excellent

Measurements: 08/12/2022

Spread (m): N-S 20.4, E-W 18.7,

Girth (m): 5.1 measured at ground level, multi-trunked

Height (m): 17.1

Condition: Excellent

Access: Unrestricted

Classified: 13/06/1985

How is it significant?

Contribution to the landscape of historic garden

Rare or localised

A native to South Africa, this species is rare in cultivation in Victoria. Other known examples occur in Geelong (1), Camperdown (1) Royal Botanic Gardens(8) This species has been included on the Rare & Endangered List. It is located near the main house on the left hand side.

Measurements: c1985

Spread (m): 14

Girth (m): 4.6

Height (m): 13.5

Estimated Age (yrs): 110

Condition: Good

Measurements: 14/11/2011

Spread (m): N-S 18.2, E-W 20.2,

Girth (m):2 (Multi trunked at ground level. Has eight main trunks. Measured is largest trunk at 0.5m above ground)

Height (m): 19.1

Condition: Excellent

Measurements: 08/12/2022

Spread (m): N-S 20.4, E-W 18.7,

Girth (m): 5.1 measured at ground level, multi-trunked

Height (m): 17.1

Condition: Excellent

Access: Unrestricted

Classified: 13/06/1985

Why is it significant?

Contribution to the landscape of historic garden

Rare or localised

A native to South Africa, this species is rare in cultivation in Victoria. Other known examples occur in Geelong (1), Camperdown (1) Royal Botanic Gardens(8) This species has been included on the Rare & Endangered List. It is located near the main house on the left hand side.

Measurements: c1985

Spread (m): 14

Girth (m): 4.6

Height (m): 13.5

Estimated Age (yrs): 110

Condition: Good

Measurements: 14/11/2011

Spread (m): N-S 18.2, E-W 20.2,
Girth (m):2 (Multi trunked at ground level. Has eight main trunks. Measured is largest trunk at 0.5m above ground)
Height (m): 19.1
Condition: Excellent

Measurements: 08/12/2022
Spread (m): N-S 20.4, E-W 18.7,
Girth (m): 5.1 measured at ground level, multi-trunked
Height (m): 17.1
Condition: Excellent

Access: Unrestricted
Classified: 13/06/1985

Other Names Cassine crocea, African Holly,

Hermes Number 70744

Property Number

This place/object may be included in the Victorian Heritage Register pursuant to the Heritage Act 2017. Check the Victorian Heritage Database, selecting 'Heritage Victoria' as the place source.

For further details about Heritage Overlay places, contact the relevant local council or go to Planning Schemes Online <http://planningschemes.dpcd.vic.gov.au/>