
Casuarina obesa



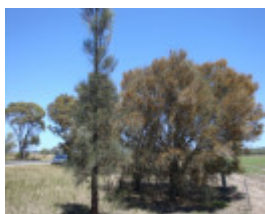
T11272 Casuarina obesa



T11272 Casuarina obesa



T11272 Casuarina obesa



T11272 Casuarina obesa



T11272 Casuarina obesa

Location

NATIMUK VIC 3409 - Property No T11272

Municipality

HORSHAM RURAL CITY

Level of significance

Regional

Heritage Listing

National Trust

Statement of Significance

Last updated on - June 16, 2008

Rare or localised

These 2 stands of *Casaurina obesa* are growing on a private property south-east of Natimuk. The stands are located on flat terrain with gilgai-patterened grey heavy clay. The trees form a dense, tangled thicket 6 metres high, with a very sparse herbaceous layer. An overstorey of *Eucalyptus largiflorens* occurs in some places. Much of the area is covered by water in winter and early spring.

C. obesa is a highly distinctive species, the cladodes usually having a strikingly tangled appearance and its habitat being swamp margins. Another stand occurs at Karadoc Swamp, near Mildura.

They could face extinction from salting

04/02/2011 (AB) Trees are noted to be in fair condition and continuing to self sow.

Measurements: 20/08/1982

Spread (m):

Girth (m):

Height (m): 6

Estimated Age (yrs): 80

Condition: Good

Measurements: (04/02/2011)

Spread (m): E-W 7; N-S 6

Girth (m): 2

Height (m): 10

Condition: Fair

Access: Restricted

Classified: 09/12/1982

Other Names Swamp Oak,

Hermes Number 70776

Property Number

This place/object may be included in the Victorian Heritage Register pursuant to the Heritage Act 2017. Check the Victorian Heritage Database, selecting 'Heritage Victoria' as the place source.

For further details about Heritage Overlay places, contact the relevant local council or go to Planning Schemes Online <http://planningschemes.dpcd.vic.gov.au/>