
Eucalyptus cadens



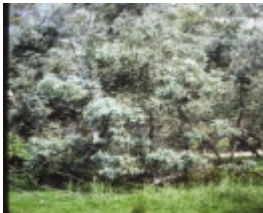
T11371 Eucalyptus cadens



T11371 Eucalyptus cadens



T11371 Eucalyptus cadens



T11371 Eucalyptus cadens



T11371 Eucalyptus cadens



T11371 Eucalyptus cadens



T11371.Eucalyptus cadens

Location

Taminick Gap Road,, BENALLA VIC 3672 - Property No T11371

Municipality

BENALLA RURAL CITY

Level of significance

State

Heritage Listing

National Trust

Statement of Significance

Last updated on - June 16, 2008

Rare or localised

This stand of approximately 200 trees, is located 3.2 km west of Hume Highway on the north side of the road. The trees have a distinctive lean in the main trunk and often form basal watershoots which grow into large limbs. They are growing in a swampy depression around several dams. *Eucalyptus cadens* is endemic to north-eastern Victoria, where about 7,700 individuals occur in 60 populations of the Ovens River and is listed as Threatened

Measurements: 24/10/1988

Spread (m): 14.2

Girth (m): 2

Height (m): 16

Estimated Age (yrs): 200

Condition: Good-Fair

Access: Unrestricted

Classified: 17/11/1988

Other Names Warby Swamp Gum,

Hermes Number 70871

Property Number

This place/object may be included in the Victorian Heritage Register pursuant to the Heritage Act 2017. Check the Victorian Heritage Database, selecting 'Heritage Victoria' as the place source.

For further details about Heritage Overlay places, contact the relevant local council or go to Planning Schemes Online <http://planningschemes.dpcd.vic.gov.au/>